

FOR LEASE



Douglass Building

4725 Grayton Road, Cleveland, OH 44135
Michael Occhionero

4725 Grayton Road

Cleveland, OH 44135



PROPERTY INFORMATION

- Exceptional office space For Lease
- Private entrance to unit
- Immediate access to highway
- Next to Cleveland Hopkins Airport
- Walking distance to Metroparks

SPACE

- 1,700 SF

RATE

- Priced for Lease: \$21.00 PSF/year (Plus Electric)

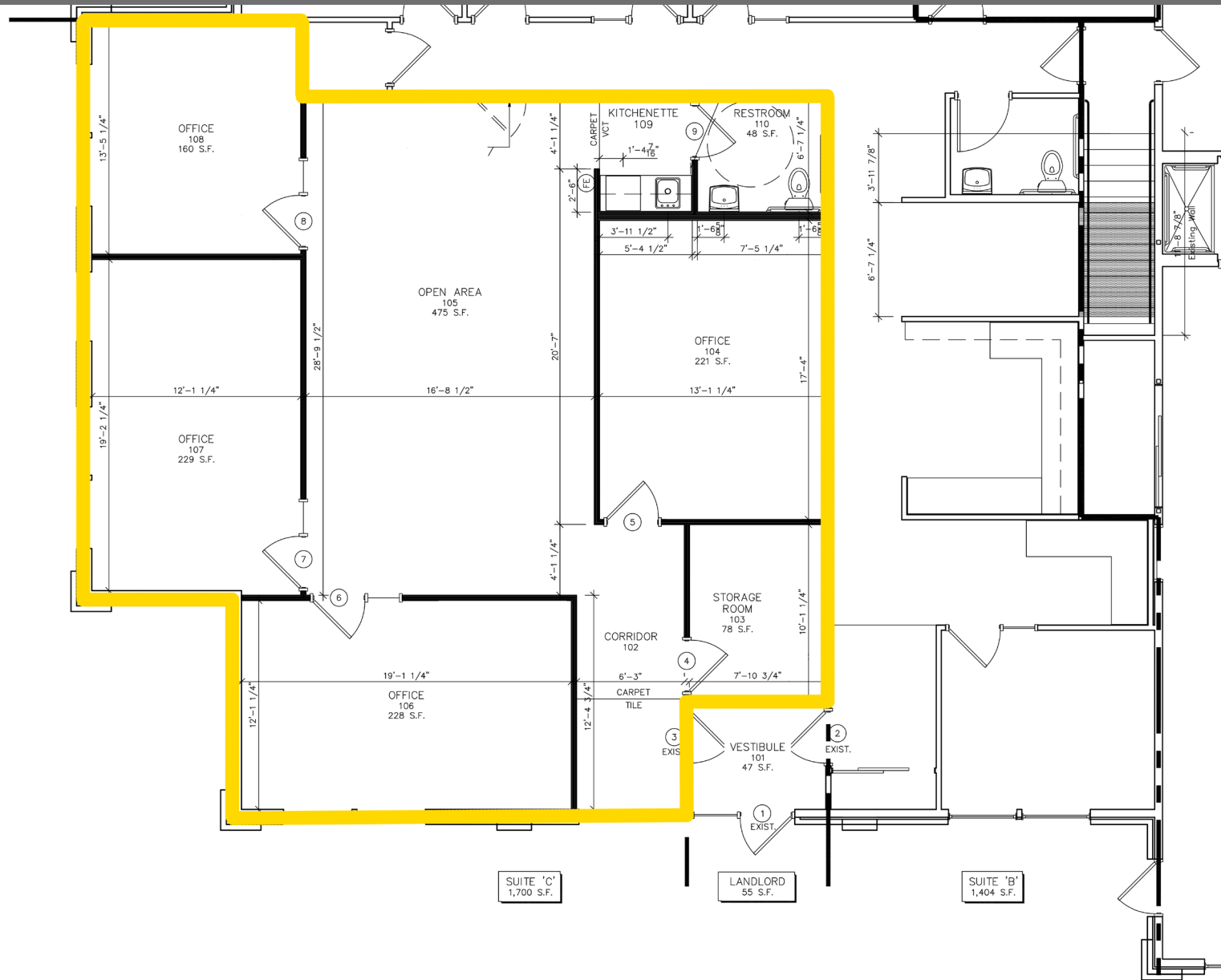


Michael Occhionero • michaelocchionero@hannacre.com • 216.861.5291



4725 Grayton Road

Cleveland, OH 44135



Michael Occhionero • michaelocchionero@hannacre.com • 216.861.5291

