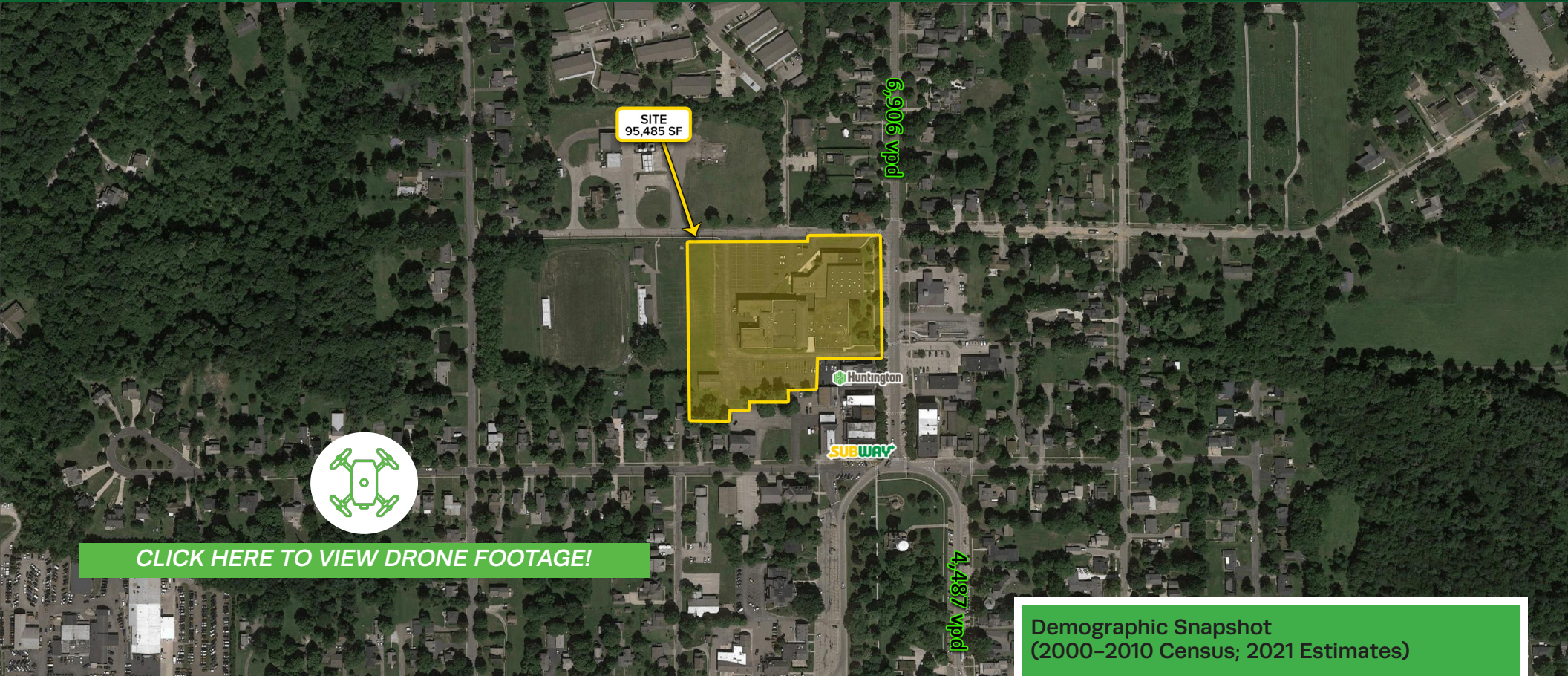


FOR SALE

Former Berkshire High School

14510 N Cheshire St., Burton, OH 44021



- Excellent redevelopment opportunity in the heart of Burton
- Current layout is turnkey for institutional uses
- Ample parking
- Available in 2022
- 95,485 SF
- Two story building
- Year built: 1949/1976

Demographic Snapshot (2000–2010 Census; 2021 Estimates)			
	1 Mile	3 Miles	5 Miles
Population	1,506	4,771	16,278
Households	579	1,848	6,130
Median HH Income	\$58,779	\$61,395	\$65,460
Average HH Income	\$87,129	\$89,884	\$88,577
Daytime Population	690	4,845	13,765

[View in Google Maps](#)



The information submitted herein is not guaranteed. Although obtained from reliable resources, it is subject to errors, omissions, prior sale and withdrawal from the market without notice. Broker has made no investigation and makes no representation of the property.

Mac Biggar
📞 216.839.2020
✉ macbiggar@hannacre.com

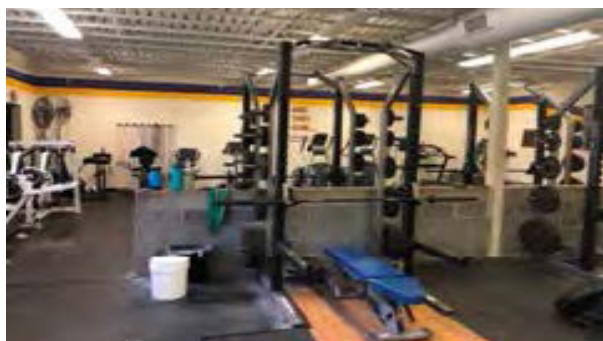
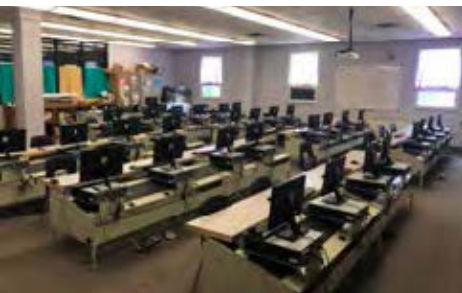
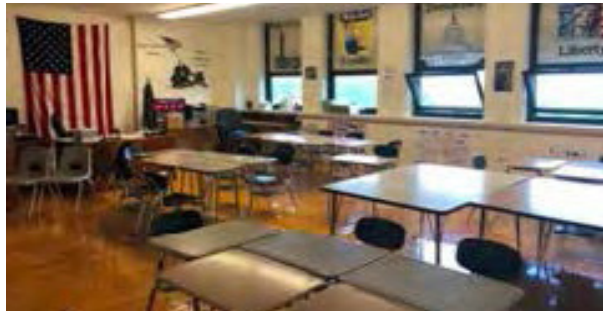
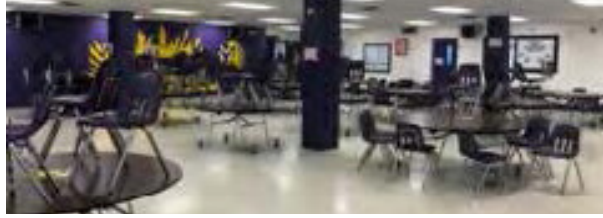
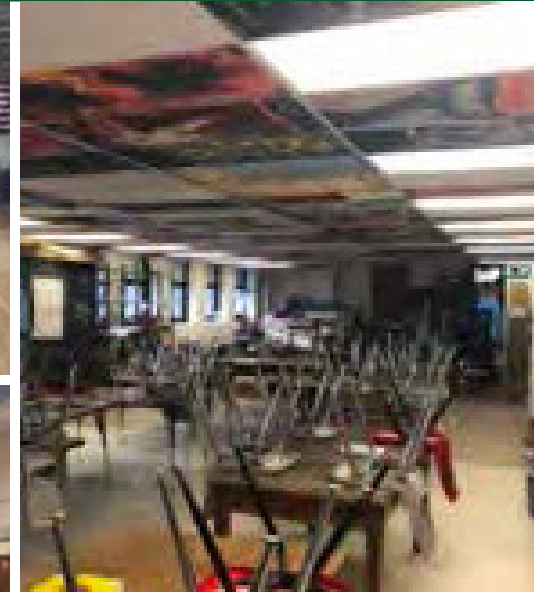
Anthony DiLallo
📞 216.839.2035
✉ anthonydilallo@hannacre.com

Lori O'Neil
📞 216.861.5214
✉ lorioneill@hannacre.com

FOR SALE

Former Berkshire High School

14510 N Cheshire St., Burton, OH 44021



The information submitted herein is not guaranteed. Although obtained from reliable resources, it is subject to errors, omissions, prior sale and withdrawal from the market without notice. Broker has made no investigation and makes no representation of the property.

Mac Biggar

📞 216.839.2020

✉ macbiggar@hannacre.com

Anthony DiLallo

📞 216.839.2035

✉ anthonydilallo@hannacre.com

Lori O'Neill

📞 216.861.5214

✉ lorioneill@hannacre.com