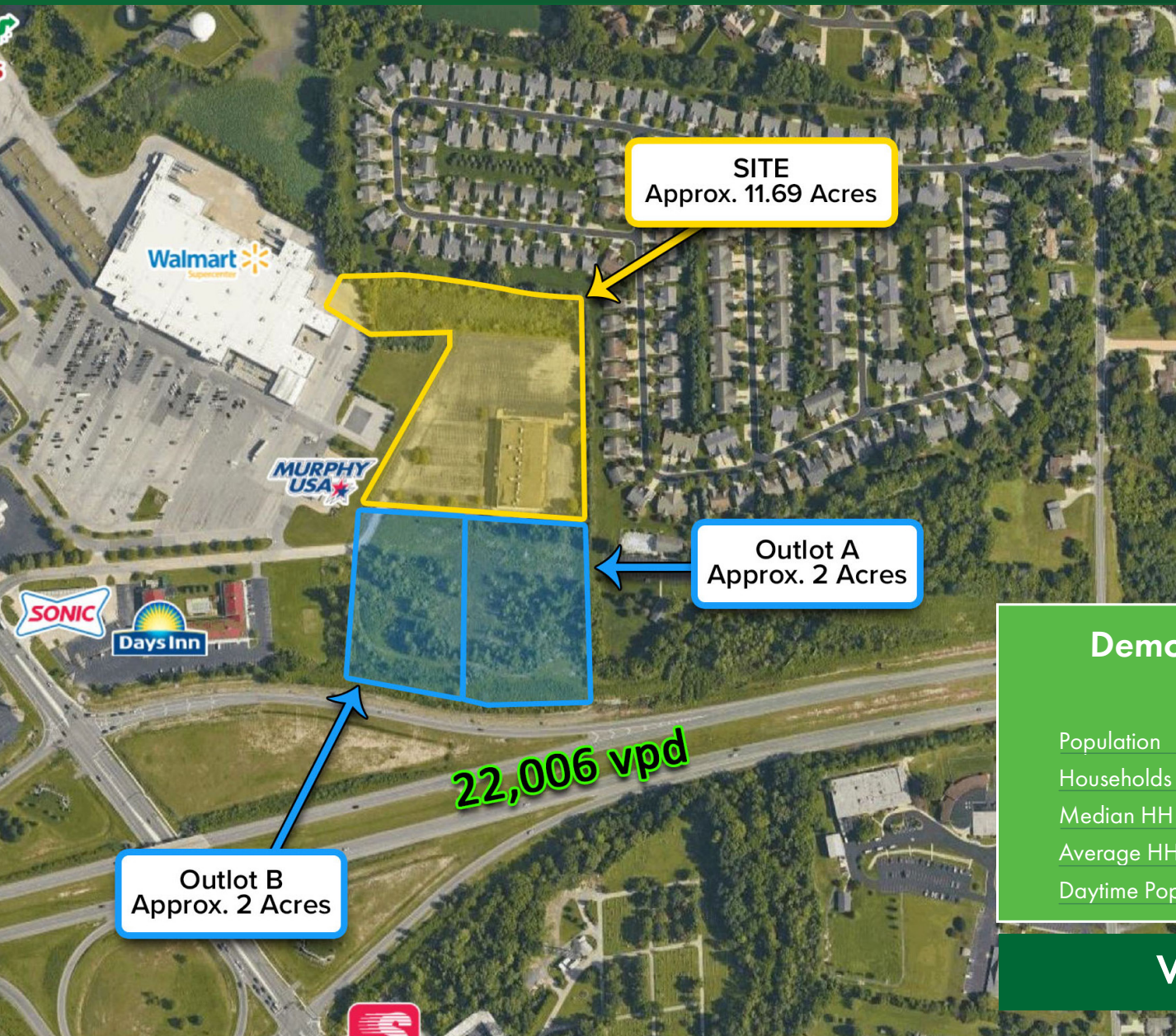


**FOR SALE  
OR LEASE**

# Milan Rd Land

Sandusky, OH 44870



## PROPERTY OVERVIEW

- 15.69 Acres Available for Redevelopment or lease off of Ohio RT 2 & Milan Road
- 29,376 SF Former AMC Theater on site for Redevelopment or lease
- Adjacent to Park Place Shopping Center and Crossings of Sandusky which are anchored by Walmart, Lowe's, Staples, Kohl's, and Home Depot
- Milan Road is the main retail corridor with over 24,000 vpd passing the site daily
- 11+ Million visitors annually to Lake Erie Shores & Islands
- Site is surrounded by national retailers, restaurants, and hospitality
- Approximately 4 acres available in outlots for sale or lease, divisible

## Demographic Snapshot (2021 Estimated)

	1 Mile	3 Miles	5 Miles
Population	3,504	15,244	41,743
Households	1,557	6,551	18,018
Median HH Inc	\$67,216	\$62,731	\$53,996
Average HH Inc	\$101,796	\$86,760	\$69,590
Daytime Pop	3,700	11,241	25,491

**View in Google Maps**



The information submitted herein is not guaranteed. Although obtained from reliable resources, it is subject to errors, omissions, prior sale and withdrawal from the market without notice. Broker has made no investigation and makes no representation of the property.

**Vincenzo Calabrese**

216.861.5286

[vincenzocalabrese@hannacre.com](mailto:vincenzocalabrese@hannacre.com)

**Andrew Chess**

216.861.5061

[andrewchess@hannacre.com](mailto:andrewchess@hannacre.com)



# FOR SALE OR LEASE

# Milan Rd Land Sandusky, OH 44870

## Summary Profile

2000-2010 Census, 2021 Estimates with 2026 Projections  
Calculated using Weighted Block Centroid from Block Groups

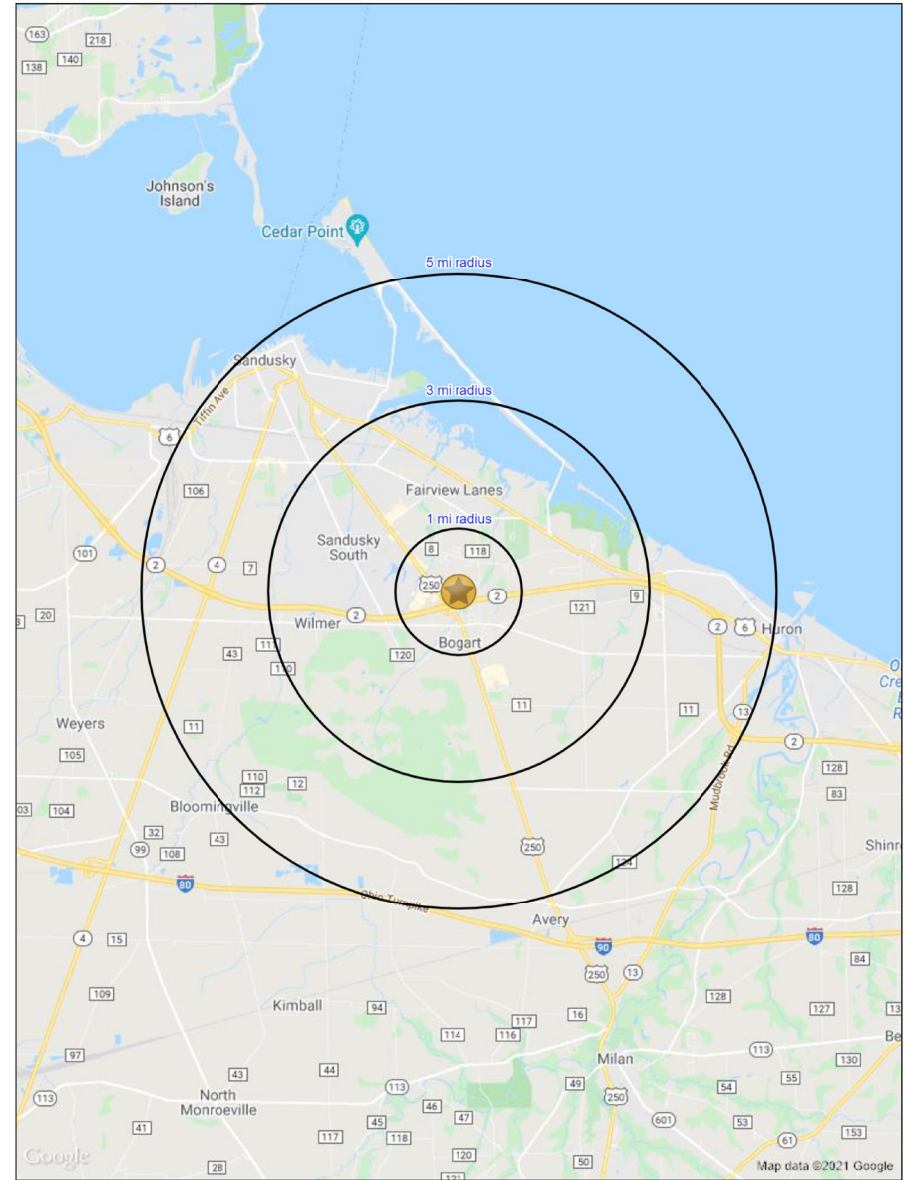
Lat/Lon: 41.4036/-82.6529

Unnamed Road Sandusky, OH 44870	1 mi radius	3 mi radius	5 mi radius
<b>Population</b>			
2021 Estimated Population	3,504	15,244	41,743
2026 Projected Population	3,483	14,976	40,588
2010 Census Population	3,419	15,602	43,527
2000 Census Population	3,147	15,401	45,673
Projected Annual Growth 2021 to 2026	-0.1%	-0.4%	-0.6%
Historical Annual Growth 2000 to 2021	0.5%	-	-0.4%
2021 Median Age	53.9	47.4	41.3
<b>Households</b>			
2021 Estimated Households	1,557	6,551	18,018
2026 Projected Households	1,563	6,489	17,671
2010 Census Households	1,474	6,475	18,136
2000 Census Households	1,292	5,993	18,477
Projected Annual Growth 2021 to 2026	-	-0.2%	-0.4%
Historical Annual Growth 2000 to 2021	1.0%	0.4%	-0.1%
<b>Race and Ethnicity</b>			
2021 Estimated White	92.7%	84.7%	76.9%
2021 Estimated Black or African American	3.2%	9.8%	15.8%
2021 Estimated Asian or Pacific Islander	2.4%	1.8%	1.2%
2021 Estimated American Indian or Native Alaskan	0.1%	0.2%	0.3%
2021 Estimated Other Races	1.7%	3.4%	5.8%
2021 Estimated Hispanic	2.8%	3.8%	5.4%
<b>Income</b>			
2021 Estimated Average Household Income	\$101,796	\$86,760	\$69,590
2021 Estimated Median Household Income	\$67,216	\$62,731	\$53,996
2021 Estimated Per Capita Income	\$45,514	\$37,679	\$30,297
<b>Education (Age 25+)</b>			
2021 Estimated Elementary (Grade Level 0 to 8)	1.2%	1.9%	2.7%
2021 Estimated Some High School (Grade Level 9 to 11)	5.9%	5.9%	6.8%
2021 Estimated High School Graduate	29.7%	30.7%	33.8%
2021 Estimated Some College	20.9%	21.3%	22.3%
2021 Estimated Associates Degree Only	9.2%	11.3%	10.6%
2021 Estimated Bachelors Degree Only	17.3%	16.5%	14.8%
2021 Estimated Graduate Degree	15.8%	12.5%	9.0%
<b>Business</b>			
2021 Estimated Total Businesses	202	679	1,775
2021 Estimated Total Employees	3,700	11,241	25,491
2021 Estimated Employee Population per Business	18.3	16.6	14.4
2021 Estimated Residential Population per Business	17.4	22.5	23.5

©2021, Sites USA, Chandler, Arizona, 480-491-1112 Demographic Source: Applied Geographic Solutions 5/2021, TIGER Geography - RS1

This report was produced using data from private and government sources deemed to be reliable. The information herein is provided without representation or warranty.

page 1 of 1



The information submitted herein is not guaranteed. Although obtained from reliable resources, it is subject to errors, omissions, prior sale and withdrawal from the market without notice. Broker has made no investigation and makes no representation of the property.

**Vincenzo Calabrese**

216.861.5286

vincenzocalabrese@hannacre.com

**Andrew Chess**

216.861.5061

andrewchess@hannacre.com

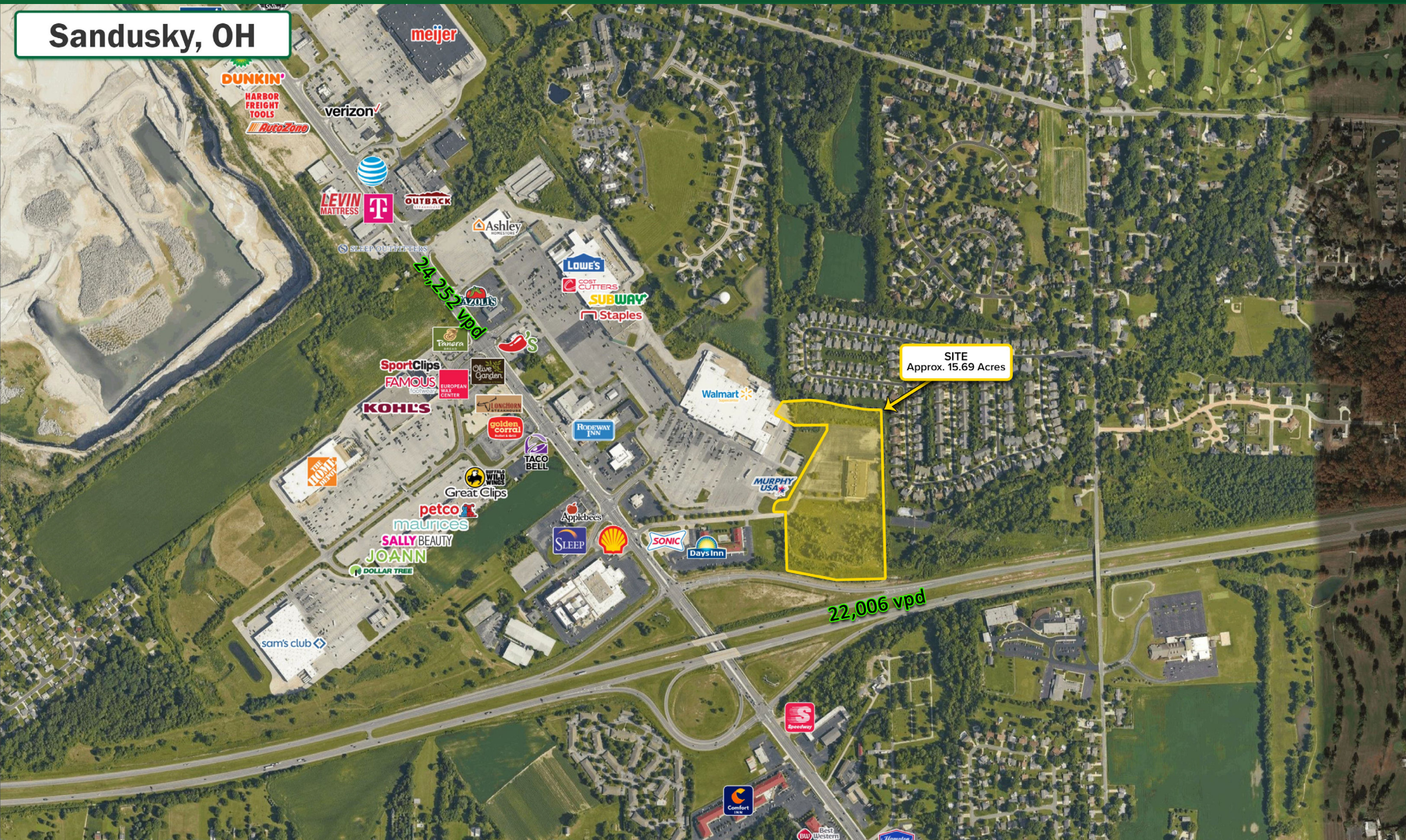


**FOR SALE  
OR LEASE**

# Milan Rd Land

Sandusky, OH 44870

**Sandusky, OH**



The information submitted herein is not guaranteed. Although obtained from reliable resources, it is subject to errors, omissions, prior sale and withdrawal from the market without notice. Broker has made no investigation and makes no representation of the property.

**Vincenzo Calabrese**

216.861.5286

[vincenzocalabrese@hannacre.com](mailto:vincenzocalabrese@hannacre.com)

**Andrew Chess**

216.861.5061

[andrewchess@hannacre.com](mailto:andrewchess@hannacre.com)



**FOR SALE  
OR LEASE**

# Milan Rd Land

Sandusky, OH 44870

**Sandusky, OH**



**HANNA**  
COMMERCIAL REAL ESTATE

The information submitted herein is not guaranteed. Although obtained from reliable resources, it is subject to errors, omissions, prior sale and withdrawal from the market without notice. Broker has made no investigation and makes no representation of the property.

**Vincenzo Calabrese**

216.861.5286

vincenzocalabrese@hannacre.com

**Andrew Chess**

216.861.5061

andrewchess@hannacre.com