

**FOR LEASE
OR SALE**

Extremely Rare Opportunity

1 Public Square., Brecksville, OH 44141



The information submitted herein is not guaranteed. Although obtained from reliable resources, it is subject to errors, omissions, prior sale and withdrawal from the market without notice. Broker has made no investigation and makes no representation of the property.

David Mrachko

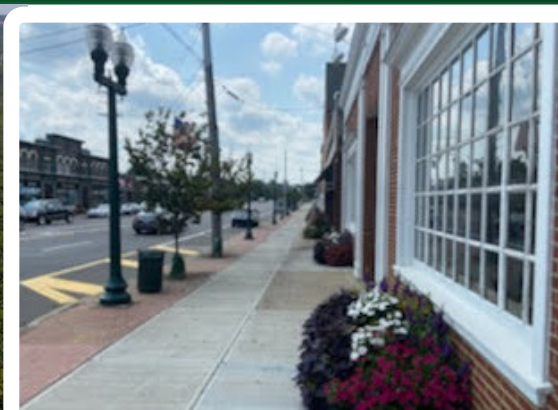
216.214.1197

davidmrachko@hannacre.com

**FOR LEASE
OR SALE**

Extremely Rare Opportunity

1 Public Square., Brecksville, OH 44141



The information submitted herein is not guaranteed. Although obtained from reliable resources, it is subject to errors, omissions, prior sale and withdrawal from the market without notice. Broker has made no investigation and makes no representation of the property.

David Mrachko

📞 216.214.1197

✉ davidmrachko@hannacre.com

**FOR LEASE
OR SALE**

Extremely Rare Opportunity

1 Public Square., Brecksville, OH 44141



PROPERTY OVERVIEW

- Prime location at a lit intersection in the heart of Brecksville
- Iconic location in a desirable market
- Possible building expansion and/or outdoor patio
- Close proximity to Heinen's, Starbucks, Chase Bank, Bruegger's Bagels, Austin's Wood Fire Grille, Panera, PNC, Key Bank, Vertical Runner, and Sherwin Williams
- For Sale Asking Price \$689,000
- Contact Agent for Lease Rate

Demographic Snapshot (2021 Estimates)

	1 Mile	3 Miles	5 Miles
Population	3,790	23,791	74,772
Households	1,616	9,367	30,332
Median HH Inc	\$86,763	\$101,154	\$91,652
Average HH Inc	\$147,642	\$143,448	\$120,791
Daytime Pop	4,501	18,660	34,019

[View in Google Maps](#)



The information submitted herein is not guaranteed. Although obtained from reliable resources, it is subject to errors, omissions, prior sale and withdrawal from the market without notice. Broker has made no investigation and makes no representation of the property.

David Mrachko

📞 216.214.1197

✉ davidmrachko@hannacre.com

FOR LEASE OR SALE

Extremely Rare Opportunity

1 Public Square., Brecksville, OH 44141

Summary Profile

2000-2010 Census, 2021 Estimates with 2026 Projections
Calculated using Weighted Block Centroid from Block Groups

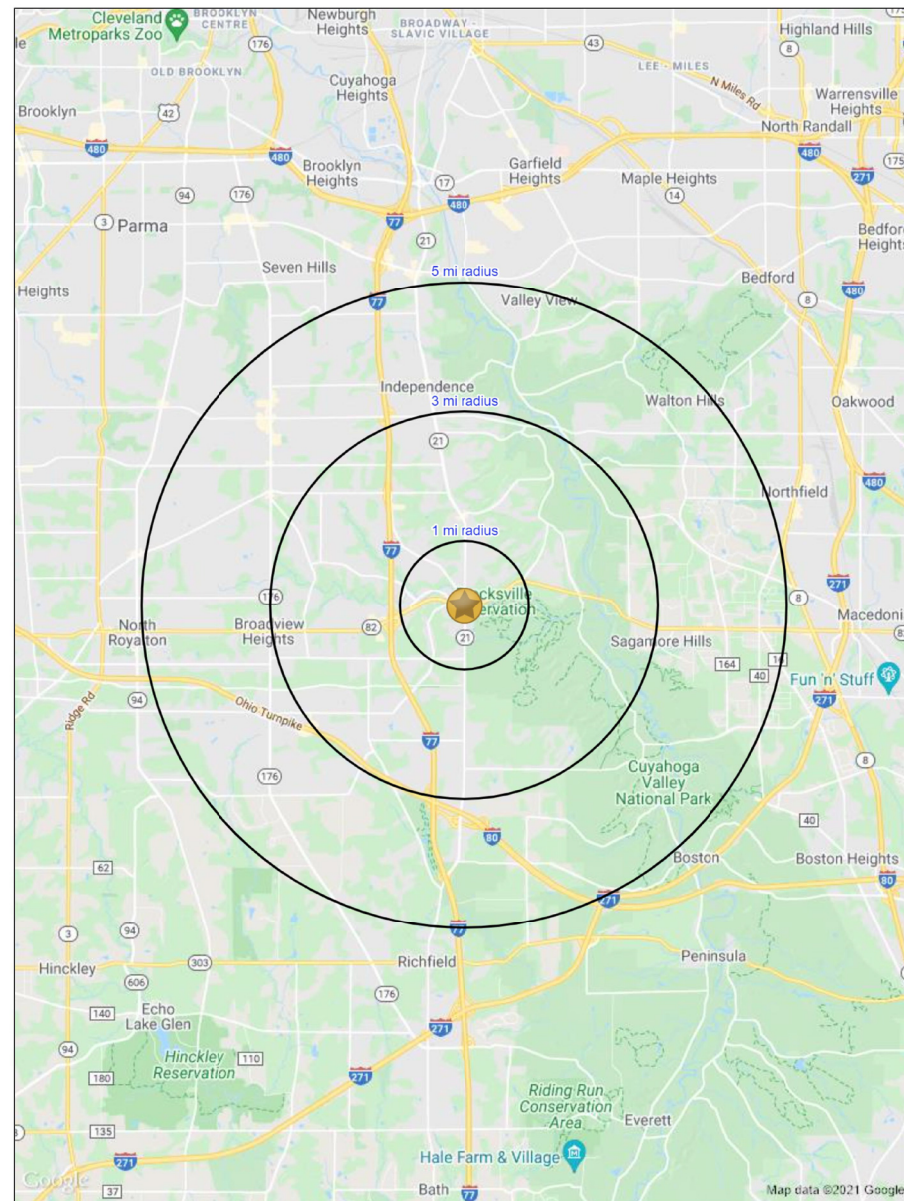
Lat/Lon: 41.3197/-81.6271

1 Public Square Brecksville, OH 44141	1 mi radius	3 mi radius	5 mi radius
Population			
2021 Estimated Population	3,790	23,791	74,772
2026 Projected Population	3,824	24,105	75,342
2010 Census Population	3,769	23,814	74,951
2000 Census Population	3,975	22,548	70,202
Projected Annual Growth 2021 to 2026	0.2%	0.3%	0.2%
Historical Annual Growth 2000 to 2021	-0.2%	0.3%	0.3%
2021 Median Age	47.8	46.3	45.7
Households			
2021 Estimated Households	1,616	9,367	30,332
2026 Projected Households	1,652	9,618	30,988
2010 Census Households	1,582	9,231	29,922
2000 Census Households	1,601	8,512	26,891
Projected Annual Growth 2021 to 2026	0.4%	0.5%	0.4%
Historical Annual Growth 2000 to 2021	-	0.5%	0.6%
Race and Ethnicity			
2021 Estimated White	89.1%	89.1%	89.2%
2021 Estimated Black or African American	5.5%	3.9%	4.3%
2021 Estimated Asian or Pacific Islander	3.5%	5.2%	4.5%
2021 Estimated American Indian or Native Alaskan	-	-	0.1%
2021 Estimated Other Races	1.8%	1.7%	1.9%
2021 Estimated Hispanic	2.5%	2.0%	2.4%
Income			
2021 Estimated Average Household Income	\$147,642	\$143,448	\$120,791
2021 Estimated Median Household Income	\$86,763	\$101,154	\$91,652
2021 Estimated Per Capita Income	\$62,996	\$56,613	\$49,076
Education (Age 25+)			
2021 Estimated Elementary (Grade Level 0 to 8)	0.8%	1.0%	1.4%
2021 Estimated Some High School (Grade Level 9 to 11)	1.5%	2.0%	2.6%
2021 Estimated High School Graduate	16.2%	19.6%	23.9%
2021 Estimated Some College	21.6%	17.1%	19.4%
2021 Estimated Associates Degree Only	5.1%	6.8%	7.7%
2021 Estimated Bachelors Degree Only	33.8%	31.3%	27.8%
2021 Estimated Graduate Degree	21.0%	22.2%	17.1%
Business			
2021 Estimated Total Businesses	377	1,159	2,622
2021 Estimated Total Employees	4,501	18,660	34,019
2021 Estimated Employee Population per Business	11.9	16.1	13.0
2021 Estimated Residential Population per Business	10.1	20.5	28.5

©2021, Sites USA, Chandler, Arizona, 480-491-1112 Demographic Source: Applied Geographic Solutions 5/2021, TIGER Geography - RS1

This report was produced using data from private and government sources deemed to be reliable. The information herein is provided without representation or warranty.

page 1 of 1



The information submitted herein is not guaranteed. Although obtained from reliable resources, it is subject to errors, omissions, prior sale and withdrawal from the market without notice. Broker has made no investigation and makes no representation of the property.

David Mrachko

216.214.1197

davidmrachko@hannacre.com