

FOR SALE

1980 Taylor Road

East Cleveland, OH 44112



[CLICK HERE TO VIEW DRONE FOOTAGE!](#)

Demographic Snapshot *(2021 Estimated)*

	1 Mile	3 Miles	5 Miles
Population	15,993	142,850	286,478
Households	7,417	62,404	125,770
Median HH Inc	\$34,665	\$43,325	\$49,768
Average HH Inc	\$44,632	\$58,861	\$69,902
Daytime Pop	4,295	36,748	100,035

[View in Google Maps](#)

PROPERTY OVERVIEW

- Rare opportunity to acquire large development site on Cleveland's East Side
- Close to University Circle
- Zoned for multi-family

SITE
9.2 Acres



The information submitted herein is not guaranteed. Although obtained from reliable resources, it is subject to errors, omissions, prior sale and withdrawal from the market without notice. Broker has made no investigation and makes no representation of the property.

David Mrachko

216.214.1197

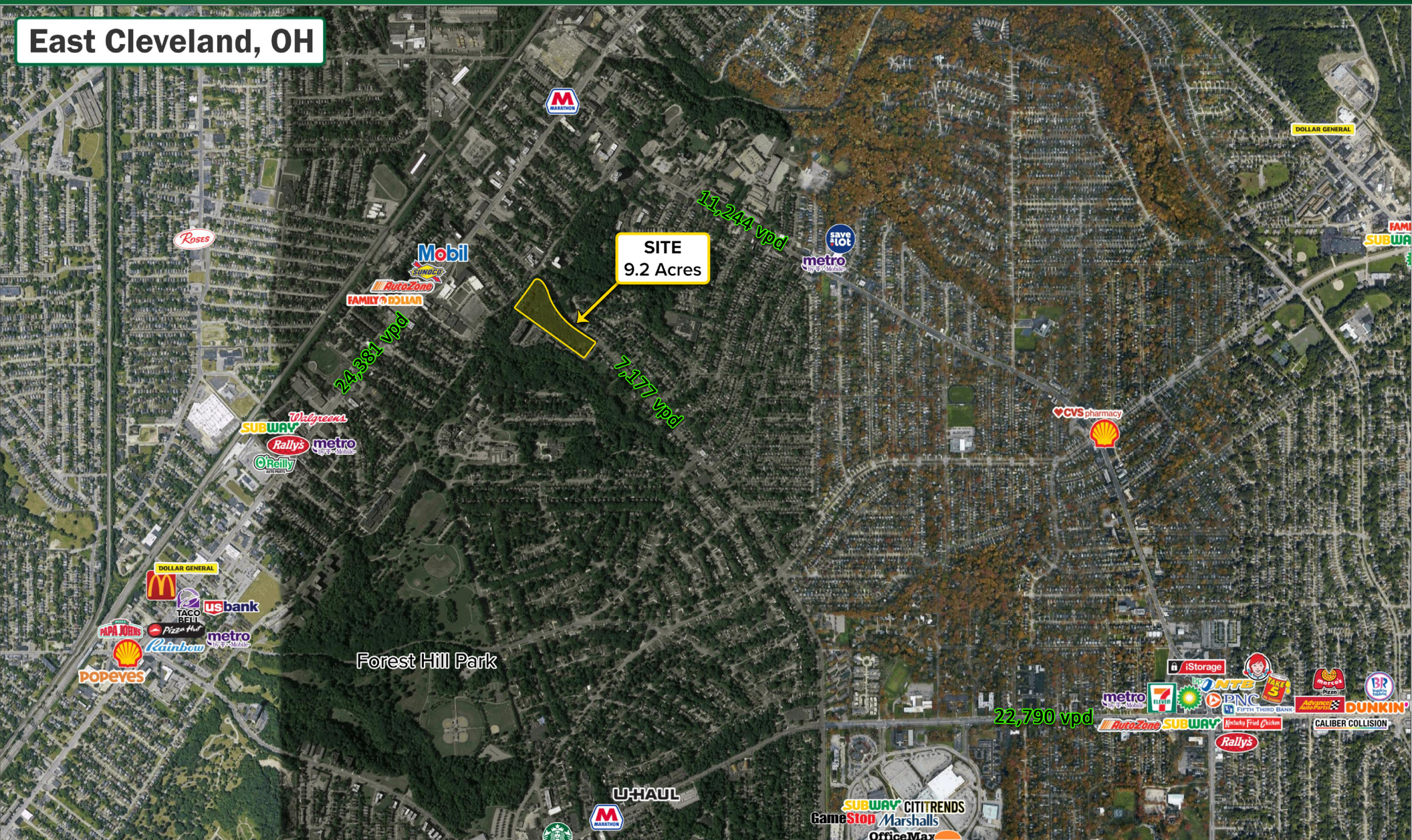
davidmrachko@hannacre.com

FOR SALE

1980 Taylor Road

East Cleveland, OH 44112

East Cleveland, OH



The information submitted herein is not guaranteed. Although obtained from reliable resources, it is subject to errors, omissions, prior sale and withdrawal from the market without notice. Broker has made no investigation and makes no representation of the property.

David Mrachko

216.214.1197

davidmrachko@hannacre.com

FOR SALE

1980 Taylor Road

East Cleveland, OH 44112

SUMMARY PROFILE

2000-2010 Census, 2021 Estimates with 2026 Projections

Calculated using Weighted Block Centroid from Block Groups

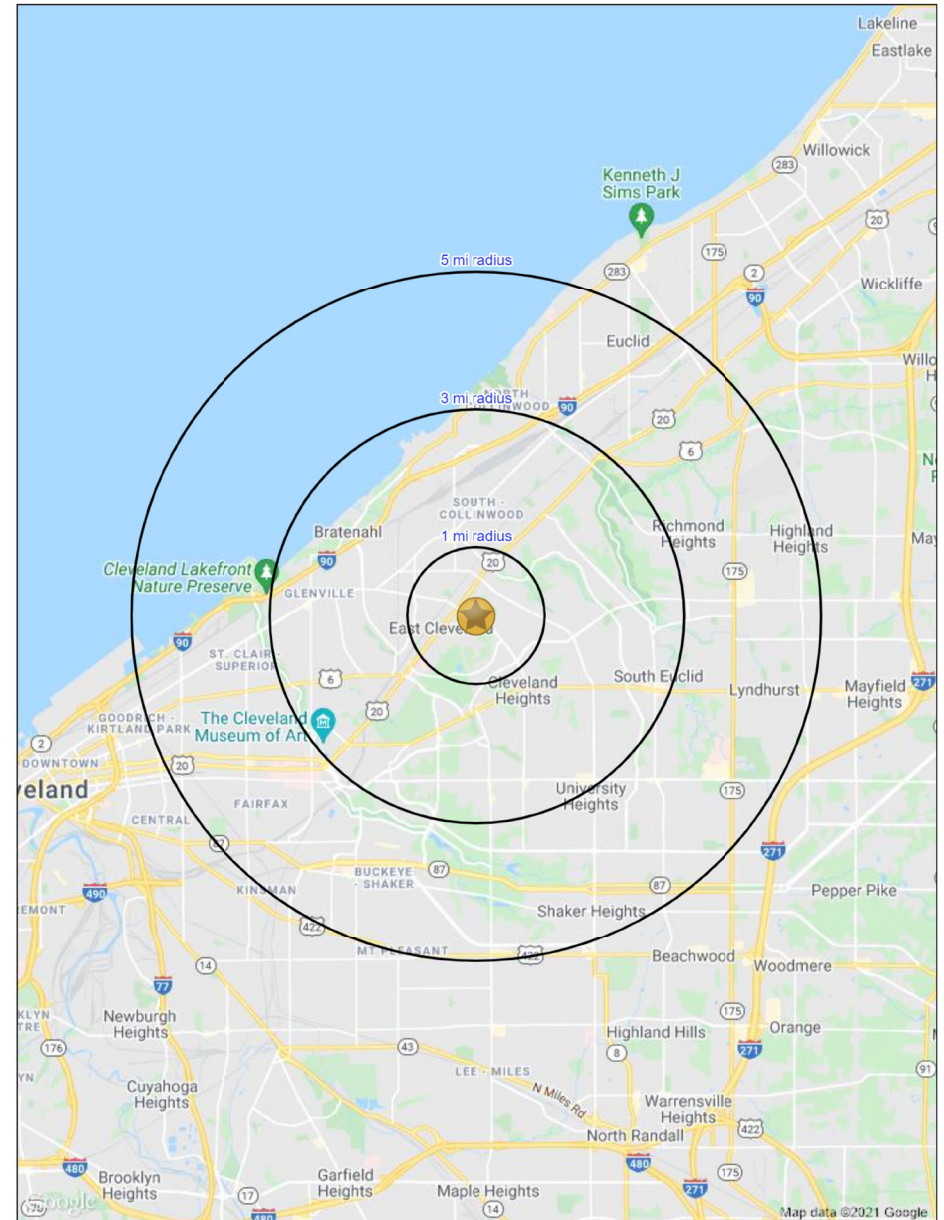
Lat/Lon: 41.5356/-81.5693

1980 Taylor Rd

East Cleveland, OH 44112

	POPULATION			
	2021 Estimated Population	15,993	142,850	286,478
	2026 Projected Population	14,823	135,888	273,762
	2010 Census Population	16,953	148,619	299,280
	2000 Census Population	23,762	182,801	360,607
	Projected Annual Growth 2021 to 2026	-1.5%	-1.0%	-0.9%
	Historical Annual Growth 2000 to 2021	-1.6%	-1.0%	-1.0%
	2021 Median Age	43.1	37.9	39.5
	HOUSEHOLDS			
	2021 Estimated Households	7,417	62,404	125,770
	2026 Projected Households	6,943	60,047	121,551
	2010 Census Households	7,797	64,055	129,586
	2000 Census Households	9,783	74,879	148,007
	Projected Annual Growth 2021 to 2026	-1.3%	-0.8%	-0.7%
	Historical Annual Growth 2000 to 2021	-1.2%	-0.8%	-0.7%
	RACE AND ETHNICITY			
	2021 Estimated White	9.1%	26.8%	35.2%
	2021 Estimated Black or African American	87.8%	66.7%	58.2%
	2021 Estimated Asian or Pacific Islander	0.6%	3.2%	3.4%
	2021 Estimated American Indian or Native Alaskan	0.2%	0.2%	0.2%
	2021 Estimated Other Races	2.4%	3.1%	3.0%
	2021 Estimated Hispanic	1.4%	2.0%	2.3%
	INCOME			
	2021 Estimated Average Household Income	\$44,632	\$58,861	\$69,902
	2021 Estimated Median Household Income	\$34,665	\$43,325	\$49,768
	2021 Estimated Per Capita Income	\$20,872	\$25,916	\$30,929
	EDUCATION (AGE 25+)			
	2021 Estimated Elementary (Grade Level 0 to 8)	2.6%	2.6%	2.9%
	2021 Estimated Some High School (Grade Level 9 to 11)	10.7%	9.4%	8.5%
	2021 Estimated High School Graduate	32.1%	26.2%	25.2%
	2021 Estimated Some College	26.6%	23.8%	22.0%
	2021 Estimated Associates Degree Only	7.9%	8.3%	7.9%
	2021 Estimated Bachelors Degree Only	12.4%	15.6%	17.1%
	2021 Estimated Graduate Degree	7.6%	14.1%	16.4%
	BUSINESS			
	2021 Estimated Total Businesses	371	4,028	9,037
	2021 Estimated Total Employees	4,295	36,748	100,035
	2021 Estimated Employee Population per Business	11.6	9.1	11.1
	2021 Estimated Residential Population per Business	43.1	35.5	31.7

The report was produced using data from private and government sources deemed to be reliable. The information herein is provided without representation or warranty.



The information submitted herein is not guaranteed. Although obtained from reliable resources, it is subject to errors, omissions, prior sale and withdrawal from the market without notice. Broker has made no investigation and makes no representation of the property.

David Mrachko

216.214.1197

davidmrachko@hannacre.com