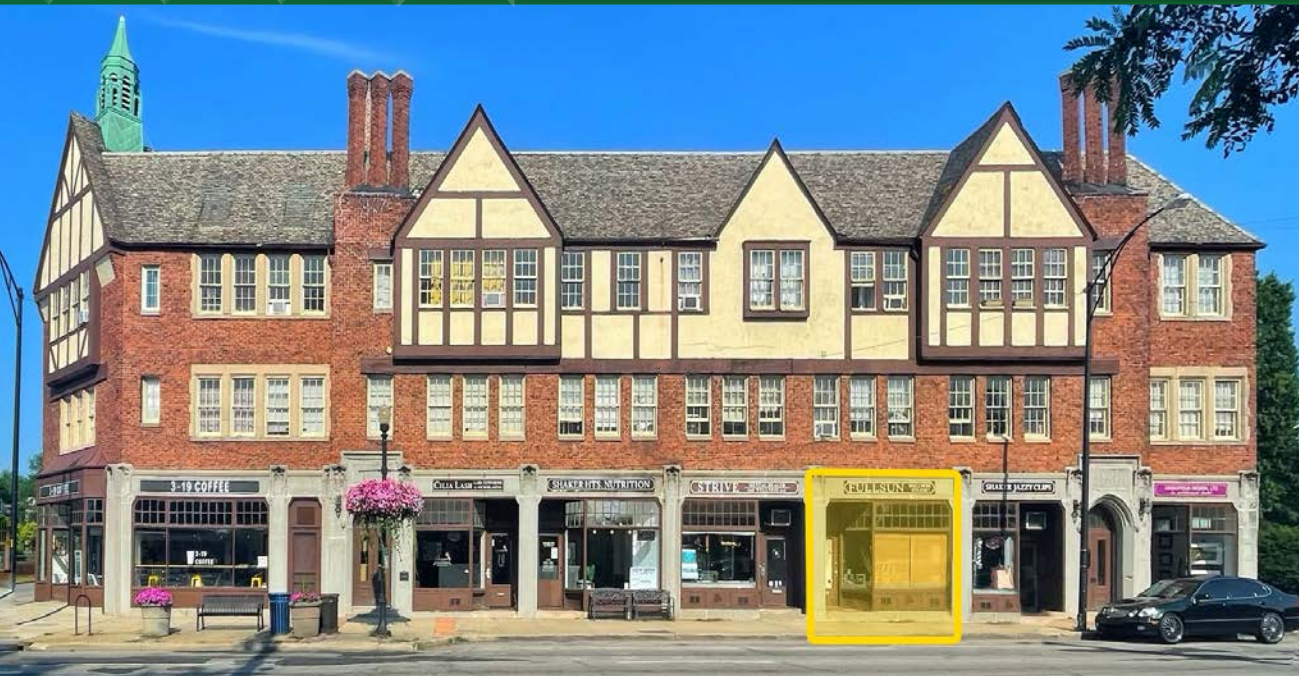


**AVAILABLE**

# 1,120 SF and 800 SF Retail/Office Space

3427-3443 Lee Rd., Shaker Heights, OH 44120



## PROPERTY OVERVIEW

- Located in historic Shaker Heights Civic Center District
- Excellent visibility, high population density, signage available
- Adjacent to Heinen's and Shaker Town Center
- Free private parking on site and front street parking available
- Lease Rate: Contact Listing Broker

**Demographic Snapshot** (2021 Estimated)

	1 Mile	3 Miles	5 Miles
Population	20,069	138,925	327,742
Households	8,446	59,008	139,980
Median HH Inc	\$60,711	\$56,300	\$49,740
Average HH Inc	\$90,047	\$81,094	\$68,863
Daytime Pop	4,361	44,229	145,411

[View in Google Maps](#)

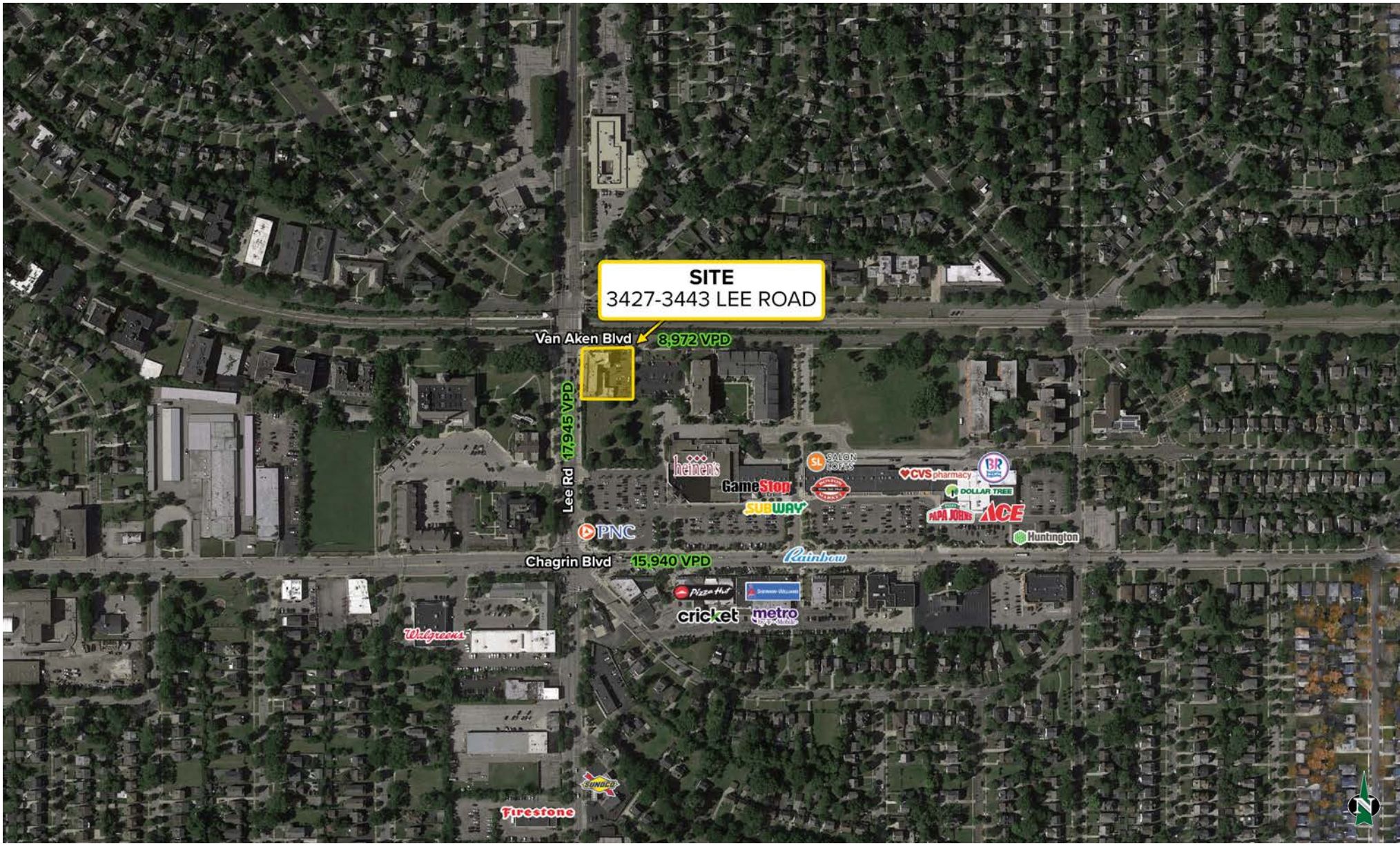


The information submitted herein is not guaranteed. Although obtained from reliable resources, it is subject to errors, omissions, prior sale and withdrawal from the market without notice. Broker has made no investigation and makes no representation of the property.

**Cheng-Han Yu, CCIM**  
 📞 216.861.5490  
 ✉ Cheng-HanYu@HannaCRE.com

**AVAILABLE**

**1,120 SF and 800 SF Retail/Office Space**  
3427-3443 Lee Rd., Shaker Heights, OH 44120



**HANNA**  
COMMERCIAL REAL ESTATE

The information submitted herein is not guaranteed. Although obtained from reliable resources, it is subject to errors, omissions, prior sale and withdrawal from the market without notice. Broker has made no investigation and makes no representation of the property.

**Cheng-Han Yu, CCIM**  
216.861.5490  
Cheng-HanYu@HannaCRE.com

**AVAILABLE**

**1,120 SF and 800 SF Retail/Office Space**  
**3427-3443 Lee Rd., Shaker Heights, OH 44120**



**HANNA**  
COMMERCIAL REAL ESTATE

The information submitted herein is not guaranteed. Although obtained from reliable resources, it is subject to errors, omissions, prior sale and withdrawal from the market without notice. Broker has made no investigation and makes no representation of the property.

**Cheng-Han Yu, CCIM**  
216.861.5490  
Cheng-HanYu@HannaCRE.com