

**FOR SALE**

**1255 E Michigan Ave.**  
Ypsilanti, MI 48198

**PRICE REDUCTION!**



The information submitted herein is not guaranteed. Although obtained from reliable resources, it is subject to errors, omissions, prior sale and withdrawal from the market without notice. Broker has made no investigation and makes no representation of the property.

**David Mrachko**

734.222.0418

DavidMrachko@hannacre.com



**FOR SALE**

**1255 E Michigan Ave.**  
Ypsilanti, MI 48198



The information submitted herein is not guaranteed. Although obtained from reliable resources, it is subject to errors, omissions, prior sale and withdrawal from the market without notice. Broker has made no investigation and makes no representation of the property.

**David Mrachko**

734.222.0418

DavidMrachko@hannacre.com



**FOR SALE**

**1255 E Michigan Ave.**  
Ypsilanti, MI 48198



The information submitted herein is not guaranteed. Although obtained from reliable resources, it is subject to errors, omissions, prior sale and withdrawal from the market without notice. Broker has made no investigation and makes no representation of the property.

**David Mrachko**

734.222.0418

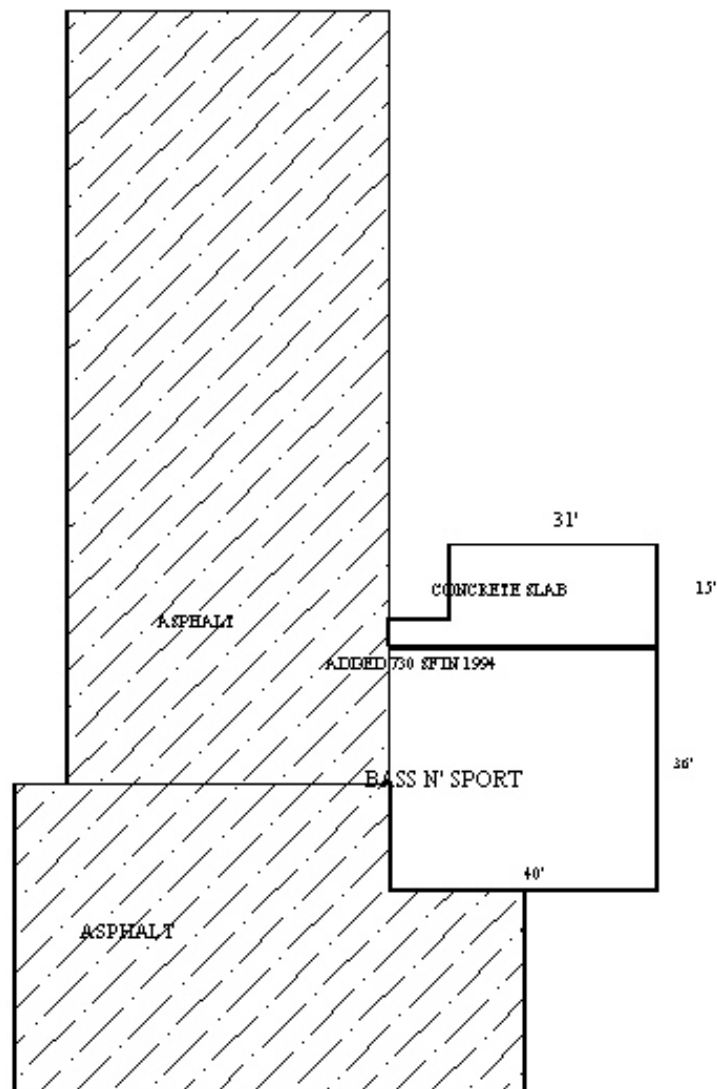
DavidMrachko@hannacre.com



**FOR SALE**

# 1255 E Michigan Ave.

Ypsilanti, MI 48198



The information submitted herein is not guaranteed. Although obtained from reliable resources, it is subject to errors, omissions, prior sale and withdrawal from the market without notice. Broker has made no investigation and makes no representation of the property.

**David Mrachko**

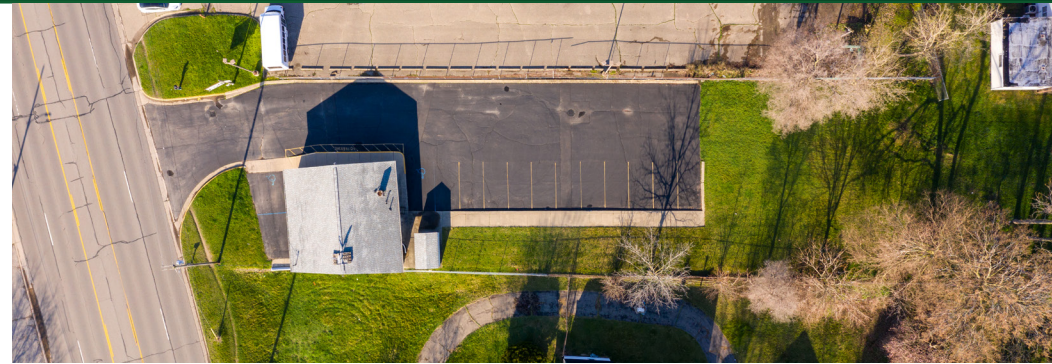
734.222.0418

DavidMrachko@hannacre.com



**FOR SALE**

**1255 E Michigan Ave.**  
Ypsilanti, MI 48198



### Demographic Snapshot *(2021 Estimated)*

	1 Mile	3 Miles	5 Miles
Population	11,572	65,340	123,907
Households	4,784	26,321	49,804
Median HH Inc	\$43,200	\$53,603	\$65,183
Average HH Inc	\$58,499	\$65,031	\$80,386
Daytime Pop	3,169	17,364	33,914

**View in Google Maps**

### PROPERTY OVERVIEW

- Parcel: K-11-10-106-004
- 0.8 Acres
- B-3 General Business
- Great location on primary corridor
- Commercial zoning allows retail, restaurant, medical
- 1,480 SF commercial building
- Priced for Sale at: \$178,000 (PRICE REDUCTION!)



The information submitted herein is not guaranteed. Although obtained from reliable resources, it is subject to errors, omissions, prior sale and withdrawal from the market without notice. Broker has made no investigation and makes no representation of the property.

**David Mrachko**

734.222.0418

DavidMrachko@hannacre.com



# FOR SALE

# 1255 E Michigan Ave.

## Ypsilanti, MI 48198

### SUMMARY PROFILE

2000-2010 Census, 2021 Estimates with 2026 Projections

\*calculated using Weighted Block Centroid from Block Groups

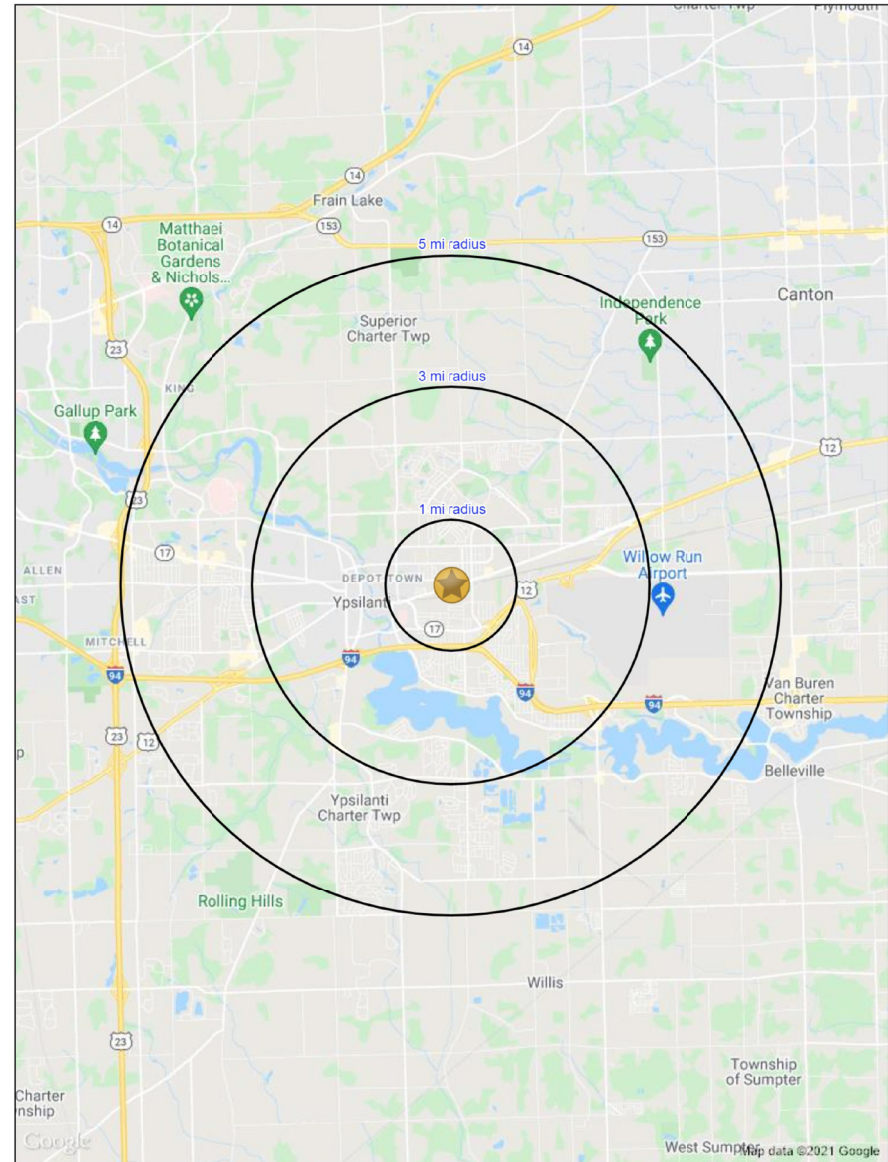
Lat/Lon: 42.245/-83.5866

255 E Michigan Ave

Ypsilanti, MI 48198

	1 mi radius	3 mi radius	5 mi radius
POPULATION	2021 Estimated Population	11,572	65,340
	2026 Projected Population	10,985	62,955
	2010 Census Population	11,156	60,896
	2000 Census Population	12,569	64,609
	Projected Annual Growth 2021 to 2026	-1.0%	-0.4%
	Historical Annual Growth 2000 to 2021	-0.4%	0.9%
HOUSEHOLDS	2021 Median Age	36.4	33.8
	2021 Estimated Households	4,784	26,321
	2026 Projected Households	4,771	26,522
	2010 Census Households	4,642	24,894
	2000 Census Households	5,164	25,497
	Projected Annual Growth 2021 to 2026	-	0.2%
RACE AND ETHNICITY	Historical Annual Growth 2000 to 2021	-0.4%	0.8%
	2021 Estimated White	67.1%	57.7%
	2021 Estimated Black or African American	22.2%	30.6%
	2021 Estimated Asian or Pacific Islander	2.4%	4.4%
	2021 Estimated American Indian or Native Alaskan	0.5%	0.5%
	2021 Estimated Other Races	7.8%	6.8%
INCOME	2021 Estimated Hispanic	7.0%	6.0%
	2021 Estimated Average Household Income	\$58,499	\$65,031
	2021 Estimated Median Household Income	\$43,200	\$53,603
	2021 Estimated Per Capita Income	\$24,280	\$26,678
	2021 Estimated Elementary (Grade Level 0 to 8)	3.3%	2.3%
	2021 Estimated Some High School (Grade Level 9 to 11)	7.9%	6.3%
EDUCATION (AGE 25+)	2021 Estimated High School Graduate	24.7%	21.3%
	2021 Estimated Some College	29.6%	25.7%
	2021 Estimated Associates Degree Only	5.9%	7.7%
	2021 Estimated Bachelors Degree Only	16.6%	20.3%
	2021 Estimated Graduate Degree	12.0%	16.5%
BUSINESS	2021 Estimated Total Businesses	372	1,681
	2021 Estimated Total Employees	3,169	17,364
	2021 Estimated Employee Population per Business	8.5	10.3
	2021 Estimated Residential Population per Business	31.1	38.9

This report was produced using data from private and government sources deemed to be reliable. The information herein is provided without representation or warranty.



The information submitted herein is not guaranteed. Although obtained from reliable resources, it is subject to errors, omissions, prior sale and withdrawal from the market without notice. Broker has made no investigation and makes no representation of the property.

David Mrachko

734.222.0418

DavidMrachko@hannacre.com