

FOR SUBLEASE

4,923 SF Suite Available

1215 Superior Ave., Suite 225, Cleveland, OH 44113



PROPERTY OVERVIEW

- Entire suite for sublease or can be divided, or can be an office sharing arrangement
- Beautiful building with many improvements and a large tenant dining common area
- Attached parking garage with spaces available at \$185/month
- **Sublease 4,923 SF – \$13.50/RSF***
**Expires 5/30/23*



SUITE 225

[CLICK HERE TO VIEW 3D TOUR!](#)



SHARED MEZZANINE

[CLICK HERE TO VIEW 3D TOUR!](#)



[View in Google Maps](#)



The information submitted herein is not guaranteed. Although obtained from reliable resources, it is subject to errors, omissions, prior sale and withdrawal from the market without notice. Broker has made no investigation and makes no representation of the property.

Dyann Davison

216.839.2008

dyanndavison@hannacre.com

FOR SUBLEASE

4,923 SF Suite Available

1215 Superior Ave., Suite 225, Cleveland, OH 44113

SUMMARY PROFILE

2000-2010 Census, 2021 Estimates with 2026 Projections

Calculated using Weighted Block Centroid from Block Groups

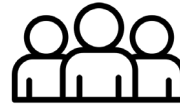
Lat/Lon: 41.5041/-81.6863

RS1

1215 Superior Ave Cleveland, OH 44114		1 mi radius	2 mi radius	3 mi radius
POPULATION	2021 Estimated Population	15,143	38,350	75,207
	2026 Projected Population	16,581	39,162	74,243
	2010 Census Population	11,386	34,402	72,407
	2000 Census Population	8,288	30,695	80,430
	Projected Annual Growth 2021 to 2026	1.9%	0.4%	-0.3%
	Historical Annual Growth 2000 to 2021	3.9%	1.2%	-0.3%
	2021 Median Age	29.9	31.0	33.6
HOUSEHOLDS	2021 Estimated Households	7,739	18,268	33,707
	2026 Projected Households	8,961	19,369	34,263
	2010 Census Households	4,769	14,943	30,591
	2000 Census Households	3,189	12,299	31,093
	Projected Annual Growth 2021 to 2026	3.2%	1.2%	0.3%
	Historical Annual Growth 2000 to 2021	6.8%	2.3%	0.4%
RACE AND ETHNICITY	2021 Estimated White	39.4%	33.9%	34.1%
	2021 Estimated Black or African American	50.0%	53.0%	51.4%
	2021 Estimated Asian or Pacific Islander	7.0%	7.4%	4.2%
	2021 Estimated American Indian or Native Alaskan	0.2%	0.3%	0.4%
	2021 Estimated Other Races	3.4%	5.4%	9.9%
	2021 Estimated Hispanic	3.6%	7.3%	14.7%
INCOME	2021 Estimated Average Household Income	\$83,238	\$71,256	\$59,867
	2021 Estimated Median Household Income	\$46,758	\$40,541	\$36,536
	2021 Estimated Per Capita Income	\$46,012	\$36,012	\$28,071
	2021 Estimated Elementary (Grade Level 0 to 8)	4.8%	5.1%	6.7%
EDUCATION (AGE 25+)	2021 Estimated Some High School (Grade Level 9 to 11)	13.0%	13.2%	13.7%
	2021 Estimated High School Graduate	21.7%	23.2%	26.6%
	2021 Estimated Some College	16.6%	18.8%	20.2%
	2021 Estimated Associates Degree Only	5.9%	5.9%	6.0%
	2021 Estimated Bachelors Degree Only	20.9%	18.7%	15.2%
	2021 Estimated Graduate Degree	17.2%	15.1%	11.5%
BUSINESS	2021 Estimated Total Businesses	3,236	5,035	6,445
	2021 Estimated Total Employees	76,868	104,751	122,362
	2021 Estimated Employee Population per Business	23.8	20.8	19.0
	2021 Estimated Residential Population per Business	4.7	7.6	11.7



2021 3 MILE NEIGHBORHOOD DEMOGRAPHICS



POPULATION

75,207



HOUSEHOLDS

33,707



MEDIAN HH INCOME

\$36,536



AVERAGE HH INCOME

\$59,867



DAYTIME POPULATION

122,362



MEDIAN AGE

33



The information submitted herein is not guaranteed. Although obtained from reliable resources, it is subject to errors, omissions, prior sale and withdrawal from the market without notice. Broker has made no investigation and makes no representation of the property.

Dyann Davison

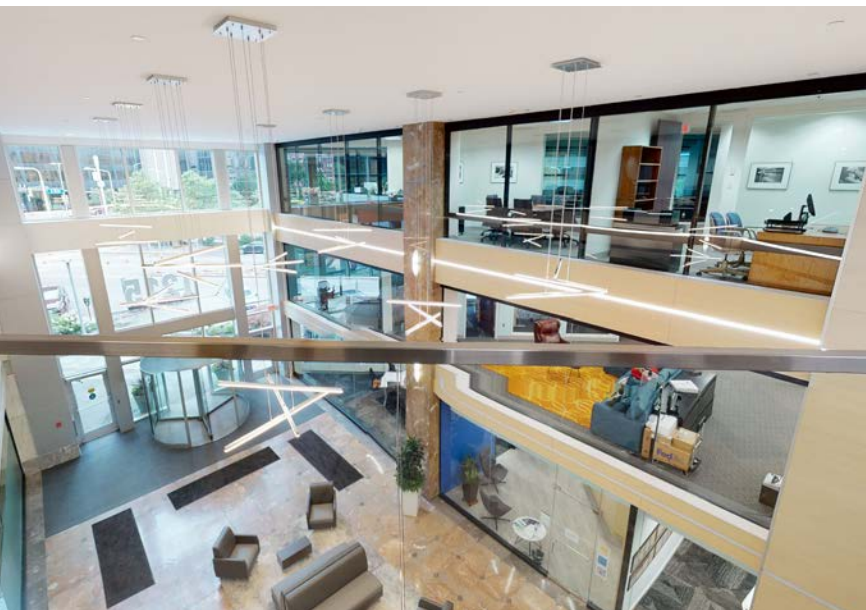
216.839.2008

dyanndavison@hannacre.com

FOR SUBLEASE 4,923 SF Suite Available

1215 Superior Ave., Suite 225, Cleveland, OH 44113

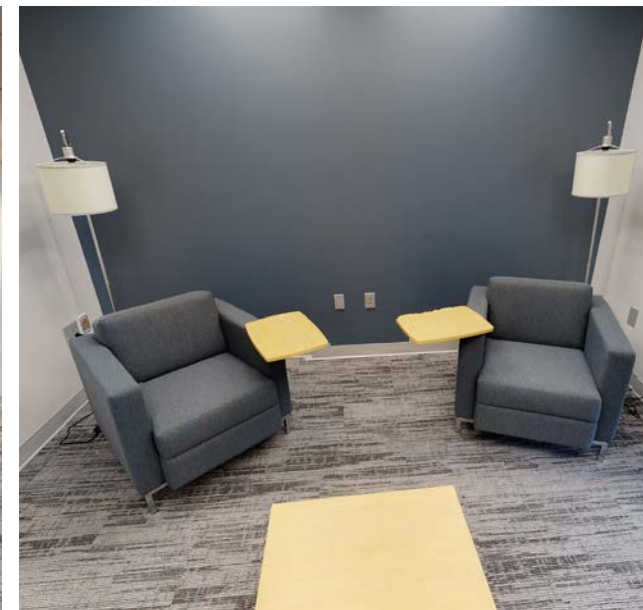
INTERIOR SUITE PHOTOS



FOR SUBLEASE 4,923 SF Suite Available

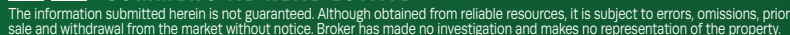
1215 Superior Ave., Suite 225, Cleveland, OH 44113

SHARED SPACE MEZZANINE PHOTOS



FOR SUBLEASE 4,923 SF Suite Available
1215 Superior Ave., Suite 225, Cleveland, OH 44113

1215 Superior Ave., Suite 225, Cleveland, OH 44113



216.839.2008

 dyanndavison@hannacre.com