

**FOR SALE**

**± 21 Acres of Land**

**S 450 State Route 109, Liberty Center, OH 43532**



## PROPERTY OVERVIEW

- ±21 Acres Located Just South of Liberty Center
- Directly Off of State Route 109 – Exit of Route 24
- 9 Miles To Napoleon – Henry County
- ±1 Acre Tower Rental Site Does Not Convey With Sale
- Offered for Sale at: \$1,100,000



[View in Google Maps](#)



The information submitted herein is not guaranteed. Although obtained from reliable resources, it is subject to errors, omissions, prior sale and withdrawal from the market without notice. Broker has made no investigation and makes no representation of the property.

**Craig Rose**

419.297.0965

CraigRose@HannaBB.com

# FOR SALE

# ± 21 Acres of Land

## S 450 State Route 109, Liberty Center, OH 43532

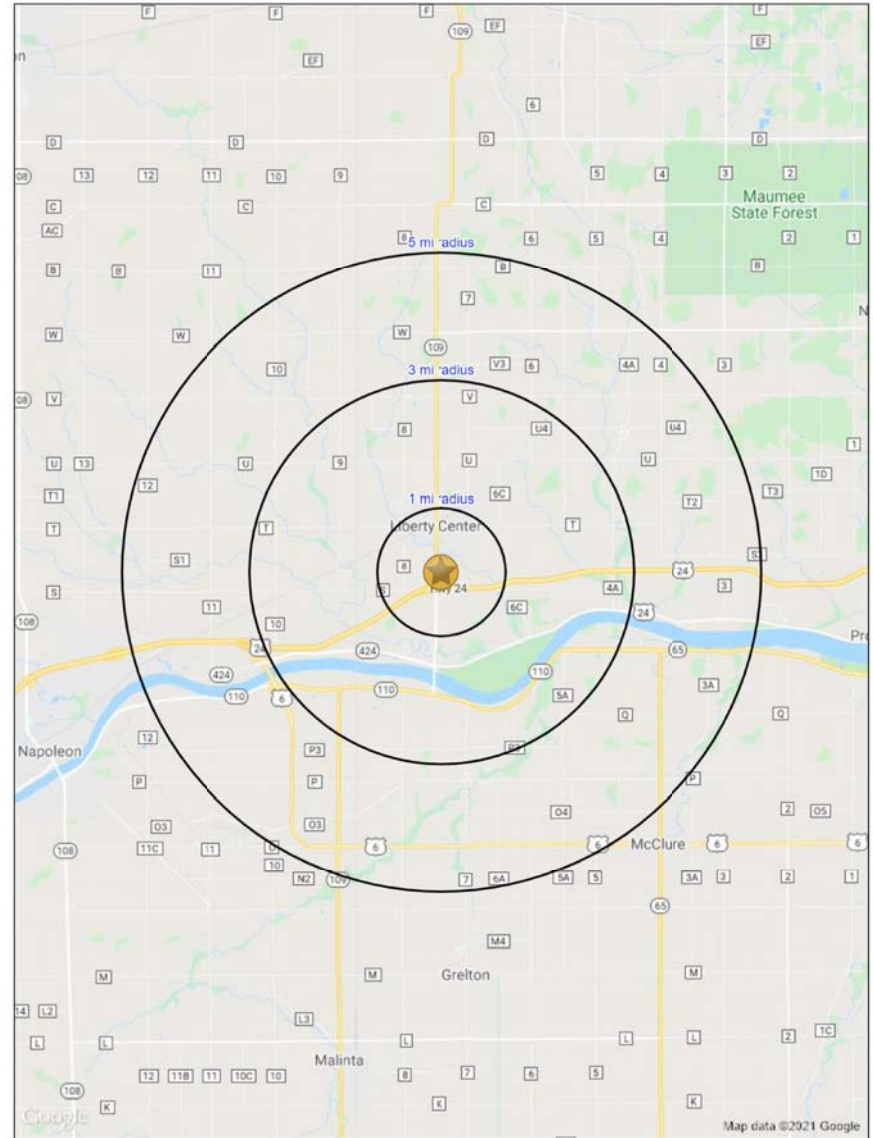
### SUMMARY PROFILE

2000-2010 Census, 2021 Estimates with 2026 Projections  
 Calculated using Weighted Block Centroid from Block Groups

Lat/Lon: 41.4327/-84.0071

S430 OH-109		1 mi radius	3 mi radius	5 mi radius
Liberty Center, OH 43532				
POPULATION	2021 Estimated Population	1,004	2,423	4,919
	2026 Projected Population	990	2,393	4,852
	2010 Census Population	1,047	2,521	5,054
	2000 Census Population	988	2,446	5,027
	Projected Annual Growth 2021 to 2026	-0.3%	-0.2%	-0.3%
	Historical Annual Growth 2000 to 2021	-	-	-0.1%
HOUSEHOLDS	2021 Median Age	36.9	38.2	39.8
	2021 Estimated Households	390	928	1,881
	2026 Projected Households	393	940	1,903
	2010 Census Households	393	936	1,875
	2000 Census Households	370	876	1,766
	Projected Annual Growth 2021 to 2026	0.2%	0.3%	0.2%
RACE AND ETHNICITY	Historical Annual Growth 2000 to 2021	0.2%	0.3%	0.3%
	2021 Estimated White	97.4%	97.1%	96.5%
	2021 Estimated Black or African American	0.3%	0.5%	0.6%
	2021 Estimated Asian or Pacific Islander	0.2%	0.4%	0.5%
	2021 Estimated American Indian or Native Alaskan	0.4%	0.4%	0.3%
	2021 Estimated Other Races	1.6%	1.7%	2.1%
INCOME	2021 Estimated Hispanic	4.0%	3.4%	3.8%
	2021 Estimated Average Household Income	\$76,709	\$80,254	\$81,477
	2021 Estimated Median Household Income	\$66,172	\$69,331	\$69,919
EDUCATION (AGE 25+)	2021 Estimated Per Capita Income	\$29,764	\$30,743	\$31,173
	2021 Estimated Elementary (Grade Level 0 to 8)	0.4%	1.5%	1.9%
	2021 Estimated Some High School (Grade Level 9 to 11)	3.8%	3.5%	3.4%
	2021 Estimated High School Graduate	46.3%	43.1%	42.6%
	2021 Estimated Some College	23.6%	23.2%	22.0%
	2021 Estimated Associates Degree Only	12.4%	13.0%	13.4%
BUSINESS	2021 Estimated Bachelors Degree Only	9.2%	10.1%	10.4%
	2021 Estimated Graduate Degree	4.2%	5.7%	6.3%
	2021 Estimated Total Businesses	23	50	95
	2021 Estimated Total Employees	182	430	953
	2021 Estimated Employee Population per Business	7.9	8.6	10.0
	2021 Estimated Residential Population per Business	43.5	48.3	51.6

This report was produced using data from private and government sources deemed to be reliable. The information herein is provided without representation or warranty.



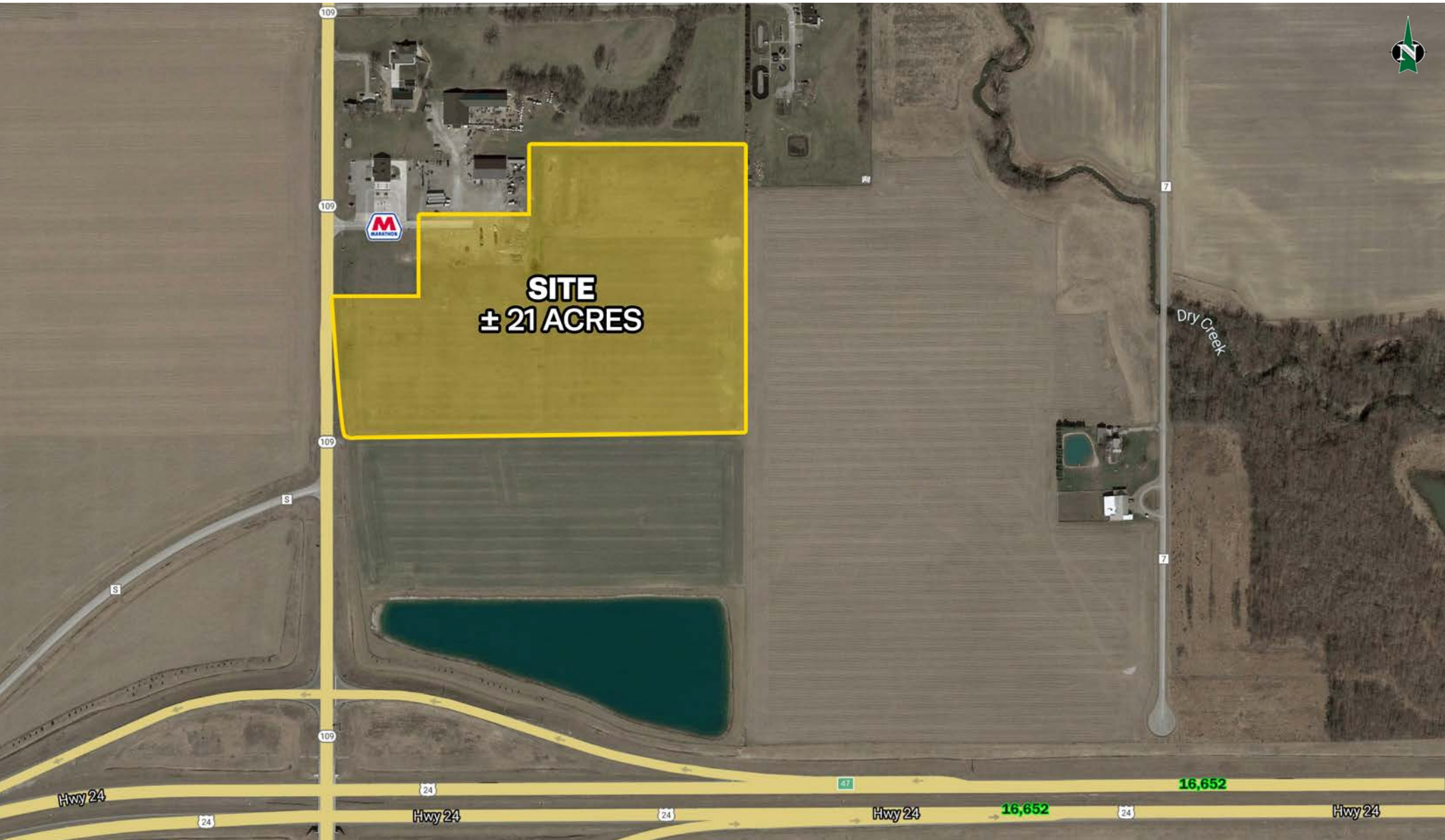
The information submitted herein is not guaranteed. Although obtained from reliable resources, it is subject to errors, omissions, prior sale and withdrawal from the market without notice. Broker has made no investigation and makes no representation of the property.

**Craig Rose**  
 419.297.0965  
 CraigRose@HannaBB.com

**FOR SALE**

**± 21 Acres of Land**

**S 450 State Route 109, Liberty Center, OH 43532**



The information submitted herein is not guaranteed. Although obtained from reliable resources, it is subject to errors, omissions, prior sale and withdrawal from the market without notice. Broker has made no investigation and makes no representation of the property.

**Craig Rose**

419.297.0965

CraigRose@HannaBB.com