

FOR SALE

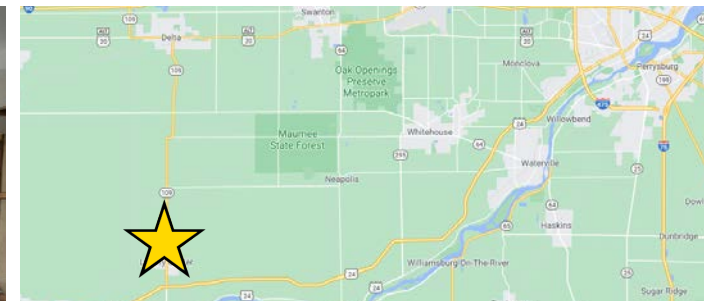
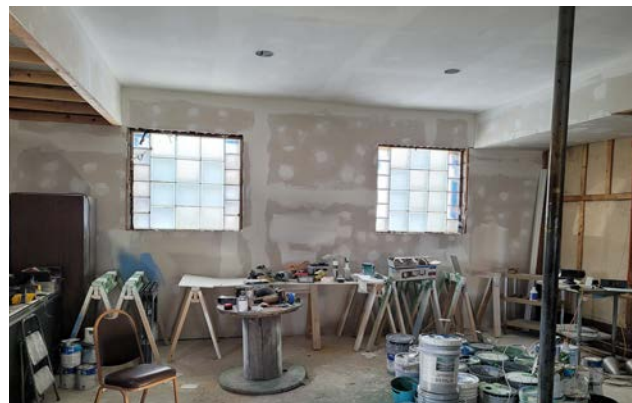
2,800 SF Construction Ready Space

301 East Street, Liberty Center, OH 43532



PROPERTY OVERVIEW

- Prime Downtown Location
- Wide Open Space Ready For Your Design
- Former Bar
- Construction Ready To Complete
- Offered for Sale at: \$95,000



[View in Google Maps](#)



The information submitted herein is not guaranteed. Although obtained from reliable resources, it is subject to errors, omissions, prior sale and withdrawal from the market without notice. Broker has made no investigation and makes no representation of the property.

Craig Rose

📞 419.297.0965

✉ CraigRose@HannaBB.com

FOR SALE

2,800 SF Construction Ready Space 301 East Street, Liberty Center, OH 43532

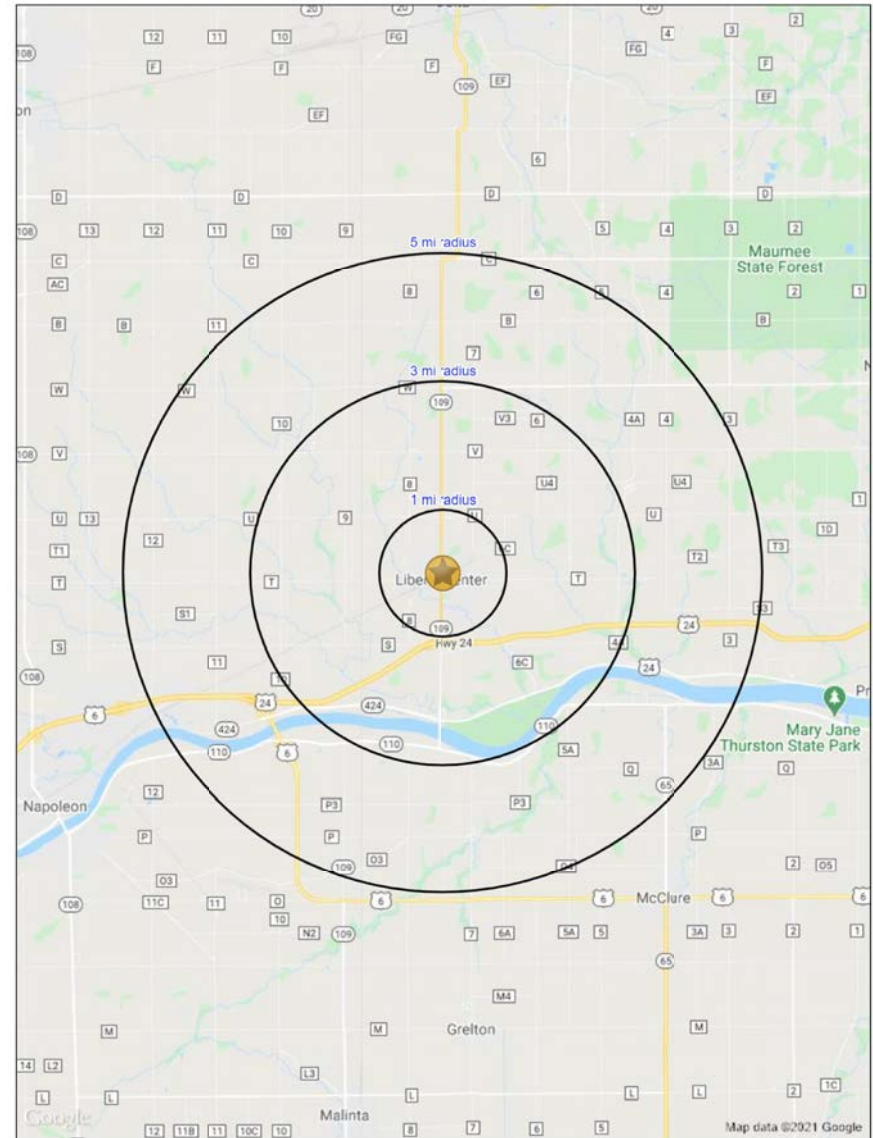
SUMMARY PROFILE

2000-2010 Census, 2020 Estimates with 2025 Projections
Calculated using Weighted Block Centroid from Block Groups

Lat/Lon: 41.4448/-84.0084

301 East St				
Liberty Center, OH 43532				
		1 mi radius	3 mi radius	5 mi radius
POPULATION	2020 Estimated Population	1,352	2,448	5,059
	2025 Projected Population	1,253	2,298	4,820
	2010 Census Population	1,425	2,562	5,229
	2000 Census Population	1,340	2,518	5,220
	Projected Annual Growth 2020 to 2025	-1.5%	-1.2%	-0.9%
	Historical Annual Growth 2000 to 2020	-	-0.1%	-0.2%
HOUSEHOLDS	2020 Median Age	36.8	38.3	39.9
	2020 Estimated Households	523	933	1,925
	2025 Projected Households	495	896	1,881
	2010 Census Households	534	948	1,932
	2000 Census Households	503	884	1,821
	Projected Annual Growth 2020 to 2025	-1.1%	-0.8%	-0.5%
RACE AND ETHNICITY	Historical Annual Growth 2000 to 2020	0.2%	0.3%	0.3%
	2020 Estimated White	97.6%	97.1%	96.9%
	2020 Estimated Black or African American	0.3%	0.5%	0.6%
	2020 Estimated Asian or Pacific Islander	0.2%	0.4%	0.4%
	2020 Estimated American Indian or Native Alaskan	0.4%	0.3%	0.3%
	2020 Estimated Other Races	1.6%	1.7%	1.8%
INCOME	2020 Estimated Hispanic	3.9%	3.4%	3.4%
	2020 Estimated Average Household Income	\$88,272	\$87,908	\$90,617
	2020 Estimated Median Household Income	\$74,002	\$75,366	\$75,719
EDUCATION (AGE 25+)	2020 Estimated Per Capita Income	\$34,138	\$33,497	\$34,489
	2020 Estimated Elementary (Grade Level 0 to 8)	0.1%	-	0.2%
	2020 Estimated Some High School (Grade Level 9 to 11)	4.3%	4.1%	3.9%
	2020 Estimated High School Graduate	50.2%	46.9%	44.2%
	2020 Estimated Some College	18.6%	19.6%	21.1%
	2020 Estimated Associates Degree Only	9.7%	12.2%	12.4%
BUSINESS	2020 Estimated Bachelors Degree Only	13.4%	12.0%	12.0%
	2020 Estimated Graduate Degree	3.7%	5.2%	6.3%
	2020 Estimated Total Businesses	25	44	94
	2020 Estimated Total Employees	200	376	926
	2020 Estimated Employee Population per Business	8.1	8.6	9.9
	2020 Estimated Residential Population per Business	54.7	55.7	53.9

This report was produced using data from private and government sources deemed to be reliable. The information herein is provided without representation or warranty.



The information submitted herein is not guaranteed. Although obtained from reliable resources, it is subject to errors, omissions, prior sale and withdrawal from the market without notice. Broker has made no investigation and makes no representation of the property.

Craig Rose
419.297.0965
CraigRose@HannaBB.com

FOR SALE

2,800 SF Construction Ready Space
301 East Street, Liberty Center, OH 43532



The information submitted herein is not guaranteed. Although obtained from reliable resources, it is subject to errors, omissions, prior sale and withdrawal from the market without notice. Broker has made no investigation and makes no representation of the property.

Craig Rose

📞 419.297.0965

✉️ CraigRose@HannaBB.com