

1360 E. 9th St.

IMG CENTER

Historic Erieview District



FOR MORE INFORMATION CONTACT:

David C. Wagner

216.839.2002

davidwagner@hannacre.com

William P. Nice, Jr., AARE, SIOR

216.839.2010

billnice@hannacre.com

Anthony DiLallo

216.839.2035

anthonydilallo@hannacre.com

SUITE PHOTOS



BUILDING OVERVIEW



The IMG building is an iconic Cleveland landmark defining the corner of E.9th Street and St. Clair Avenue.

Many great amenities within walking distance: from Sweetwater Café & Anna in the Raw in the building; the Westin Hotel, Starbucks, & Urban Farmer; to the Rock Hall and dozens of great hotels and restaurants.

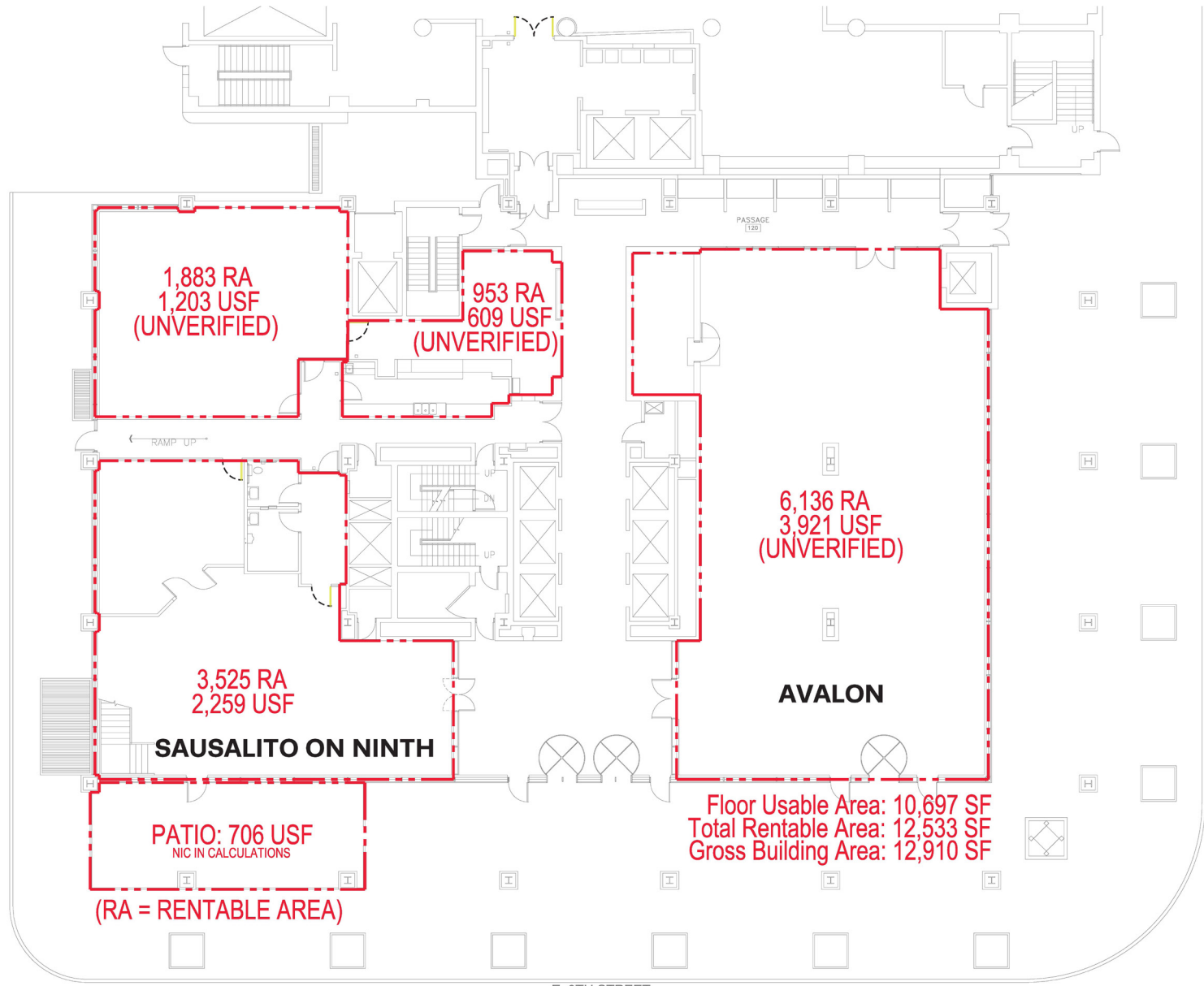
With widespread windows lining floor to ceiling, the IMG building is notable for its incredible views of Downtown Cleveland and Lake Erie.

Building has new dynamic Leadership with motivation and capital to make new transaction at the tower.

Built out market ready spaces and wide open floor plans are ready for deals occupancy this spring.



FLOORPLAN | 1ST FLOOR



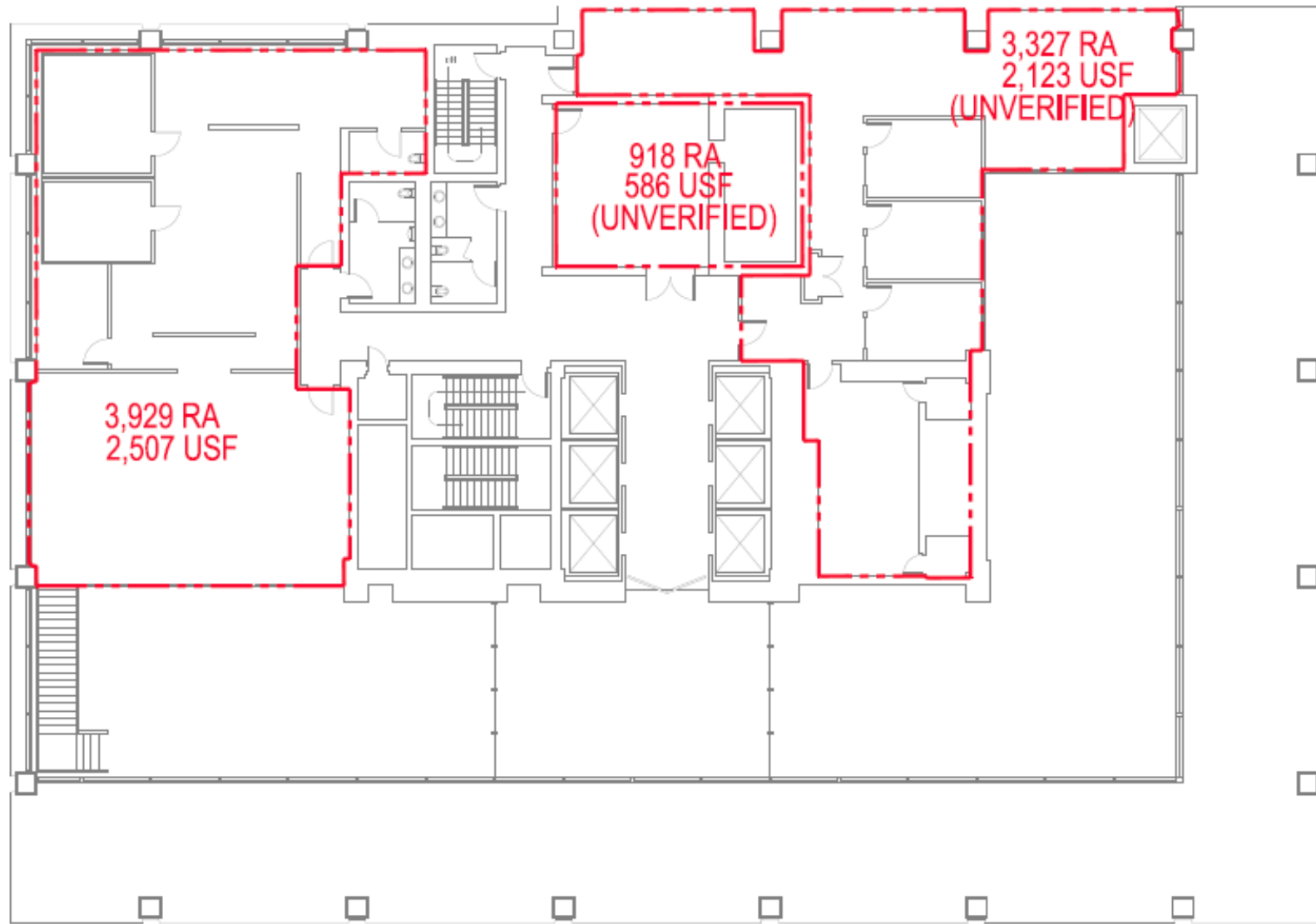
E. 9TH STREET

FLOOR PLAN - FIRST FLOOR

1/8" = 1'-0"



FLOORPLAN | 2ND FLOOR



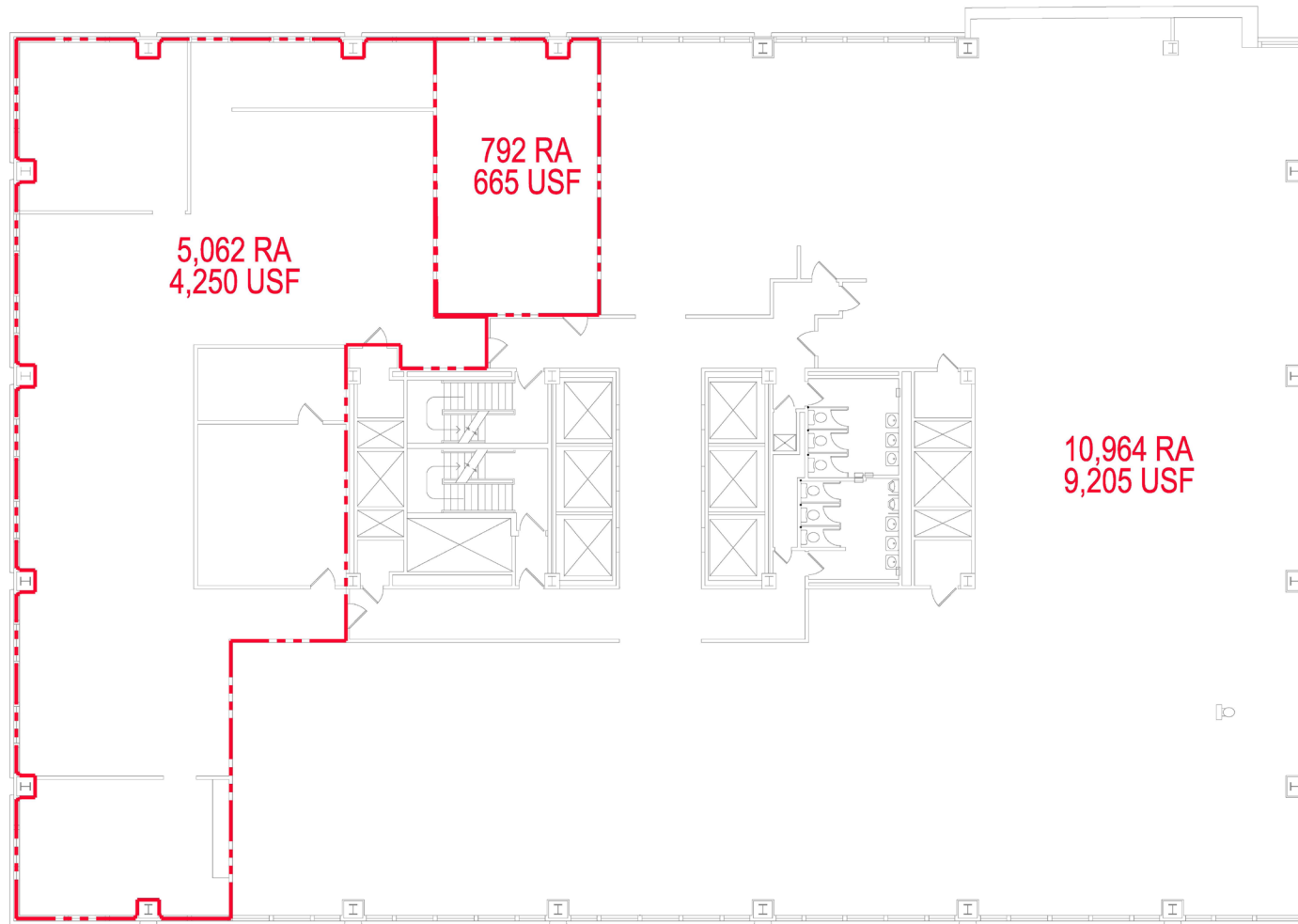
(RA = RENTABLE AREA)

Floor Usable Area: 6,666 SF
Total Rentable Area: 8,174 SF
Gross Building Area: 13,095 SF

FLOOR PLAN - SECOND FLOOR
1/8" = 1'-0"



FLOORPLAN | 7TH FLOOR



(RA = RENTABLE AREA)

Floor Usable Area: 14,120 SF
Total Rentable Area: 16,818 SF
Gross Building Area: 17,147 SF

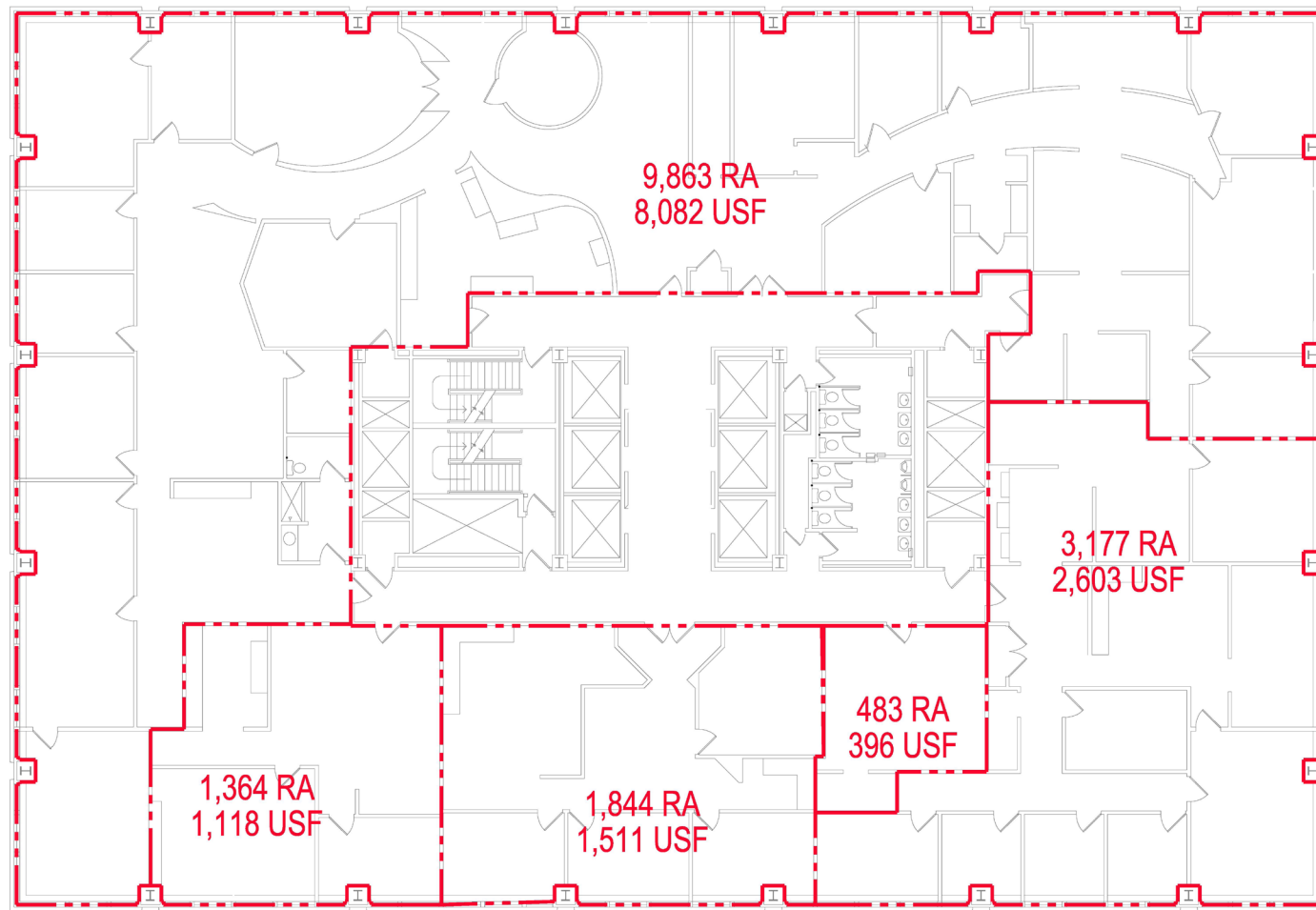
FLOOR PLAN - SEVENTH FLOOR
1/8" = 1'-0"



8,082 SF SUITE | 8TH FLOOR



FLOORPLAN | 8TH FLOOR



(RA = RENTABLE AREA)

Floor Usable Area: 13,710 SF
Total Rentable Area: 16,732 SF
Gross Building Area: 17,021 SF

FLOOR PLAN - EIGHTH FLOOR
1/8" = 1'-0"



3,605 SF SUITE | 9TH FLOOR



3,820 SF SUITE | 9TH FLOOR



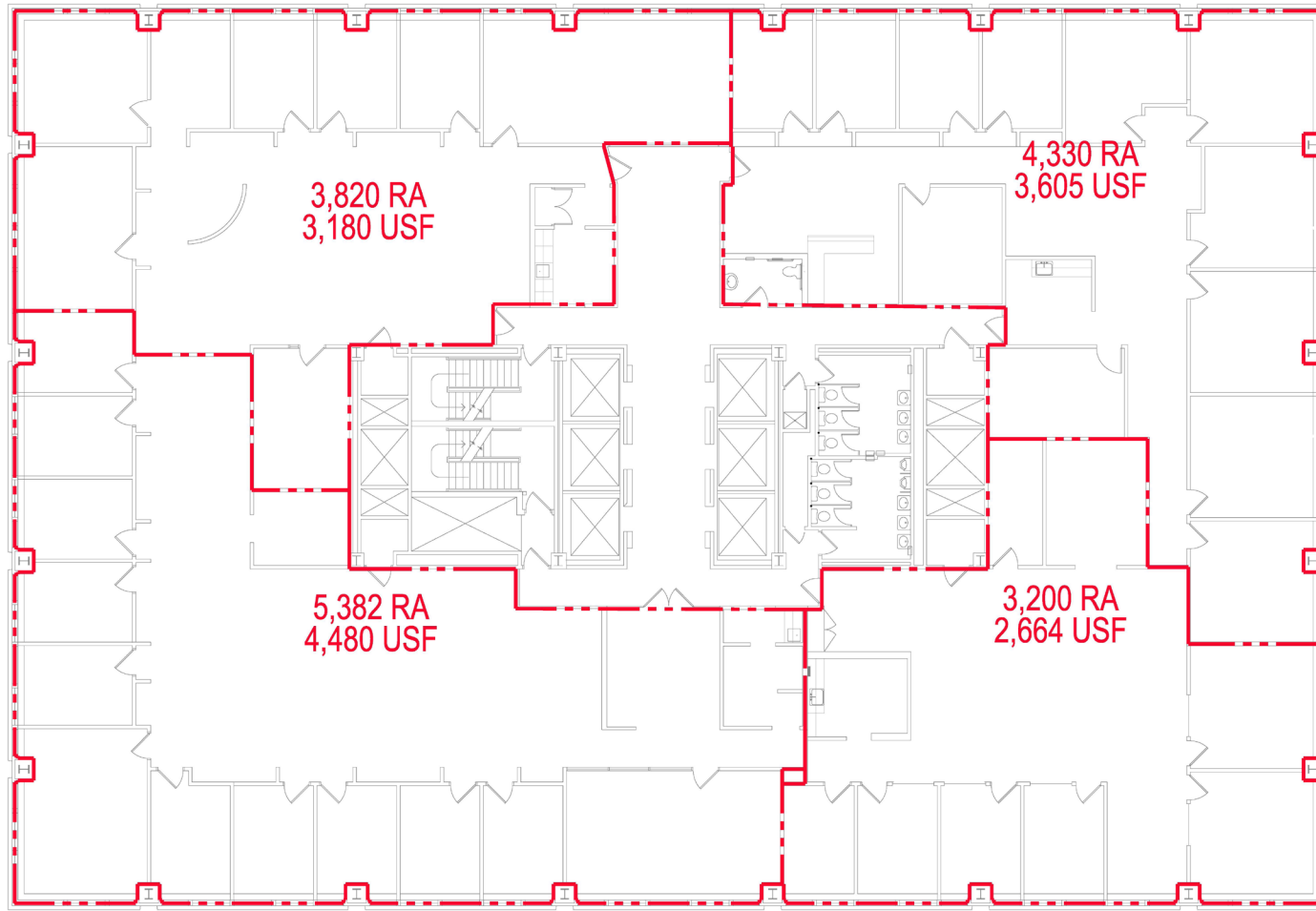
4,480 SUITE | 9TH FLOOR



2,664 SF SUITE | 9TH FLOOR



FLOORPLAN | 9TH FLOOR



(RA = RENTABLE AREA)

Floor Usable Area: 13,929 SF
Total Rentable Area: 16,732 SF
Gross Building Area: 17,021 SF

FLOOR PLAN - NINTH FLOOR
1/8" = 1'-0"



AERIAL

