

**SUBLEASE**

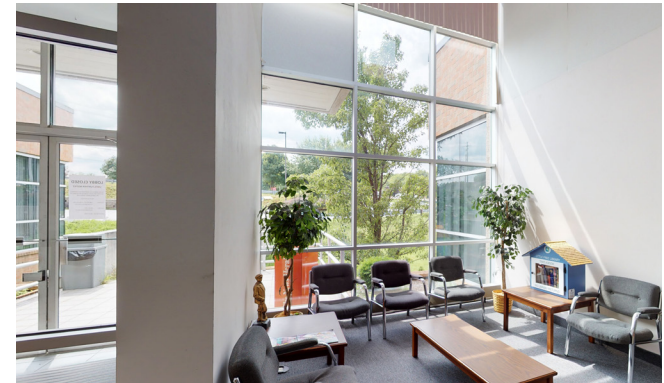
# The News Herald World Headquarters Office

7085 Mentor Avenue, Willoughby, OH 44094



## PROPERTY OVERVIEW

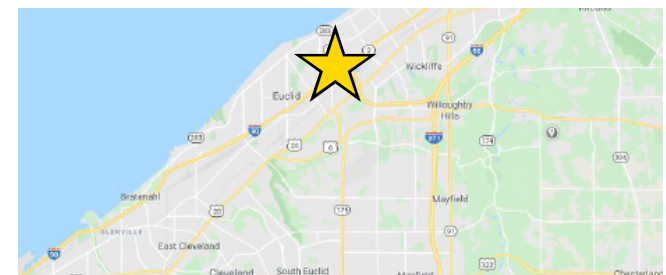
- Excellent Open Office Plan
- Total Space Available: 3,000–16,000 SF
- High Ceilings
- Great Glass Lines
- Ample Abundant Parking on Campus Like Setting
- Priced for Lease at: \$10.00/SF, Gross



### VIEW FIRST FLOOR VIRTUAL TOUR!



### VIEW SECOND FLOOR VIRTUAL TOUR!



[View in Google Maps](#)



The information submitted herein is not guaranteed. Although obtained from reliable resources, it is subject to errors, omissions, prior sale and withdrawal from the market without notice. Broker has made no investigation and makes no representation of the property.

**David Wagner**

📞 216.839.2002

✉️ DavidWagner@HannaCRE.com

**Anthony DiLallo**

📞 216.839.2035

✉️ AnthonyDiLallo@HannaCRE.com



**SUBLEASE**

# The News Herald World Headquarters Office

7085 Mentor Avenue, Willoughby, OH 44094

## INTERIOR PHOTOS – FIRST FLOOR



The information submitted herein is not guaranteed. Although obtained from reliable resources, it is subject to errors, omissions, prior sale and withdrawal from the market without notice. Broker has made no investigation and makes no representation of the property.

**David Wagner**

📞 216.839.2002

✉ [DavidWagner@HannaCRE.com](mailto:DavidWagner@HannaCRE.com)

**Anthony DiLallo**

📞 216.839.2035

✉ [AnthonyDiLallo@HannaCRE.com](mailto:AnthonyDiLallo@HannaCRE.com)

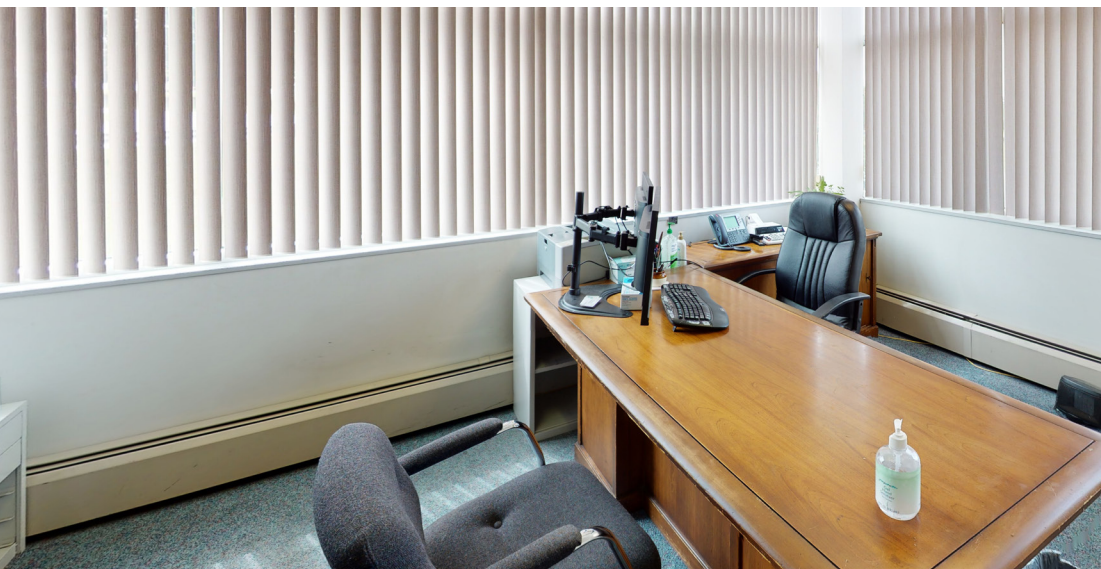


**SUBLEASE**

# The News Herald World Headquarters Office

7085 Mentor Avenue, Willoughby, OH 44094

## INTERIOR PHOTOS – SECOND FLOOR



The information submitted herein is not guaranteed. Although obtained from reliable resources, it is subject to errors, omissions, prior sale and withdrawal from the market without notice. Broker has made no investigation and makes no representation of the property.

**David Wagner**

📞 216.839.2002

✉ DavidWagner@HannaCRE.com

**Anthony DiLallo**

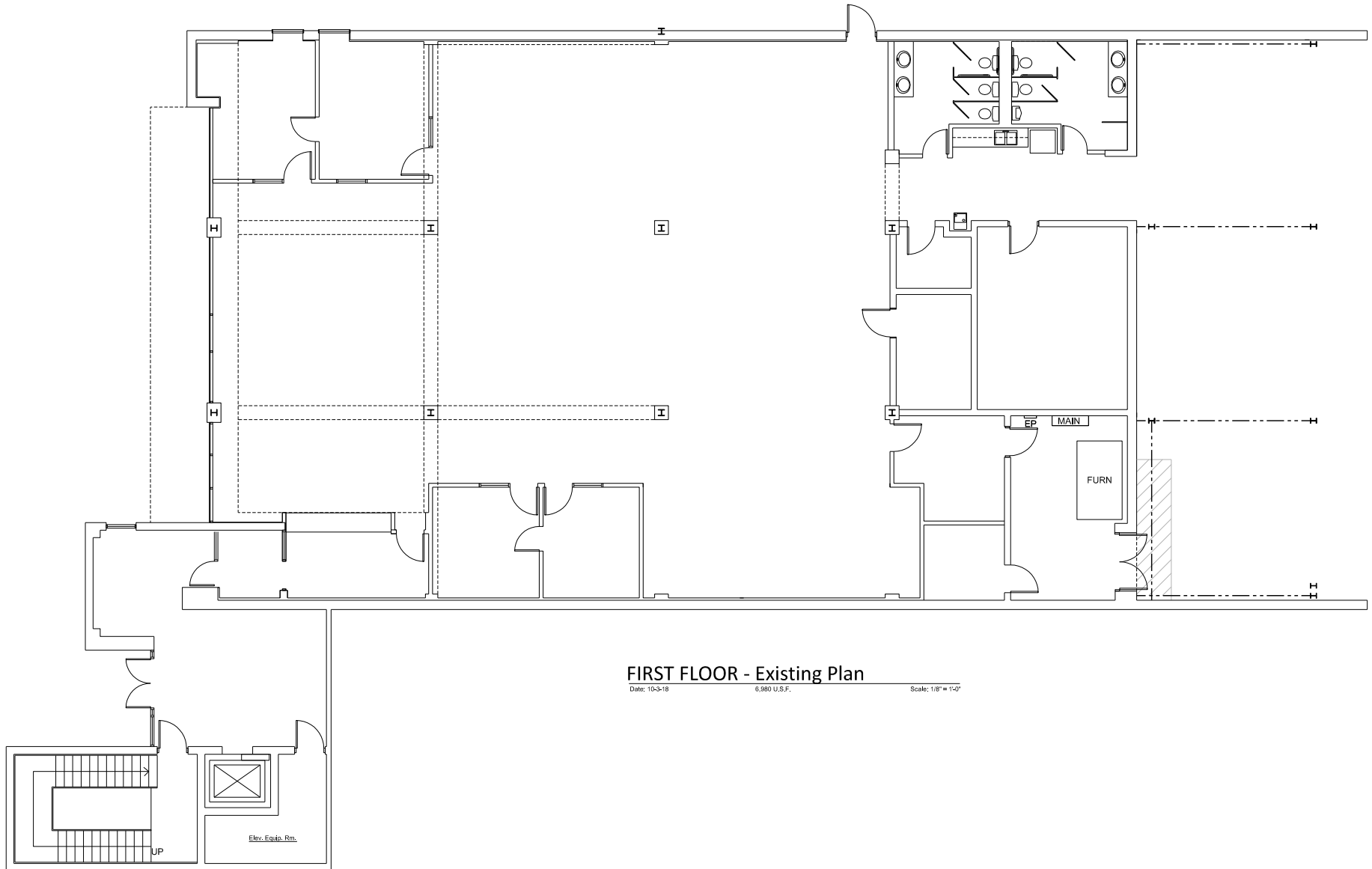
📞 216.839.2035

✉ AnthonyDiLallo@HannaCRE.com

**SUBLEASE**

# The News Herald World Headquarters Office

7085 Mentor Avenue, Willoughby, OH 44094



The information submitted herein is not guaranteed. Although obtained from reliable resources, it is subject to errors, omissions, prior sale and withdrawal from the market without notice. Broker has made no investigation and makes no representation of the property.

**David Wagner**

📞 216.839.2002

✉ DavidWagner@HannaCRE.com

**Anthony DiLallo**

📞 216.839.2035

✉ AnthonyDiLallo@HannaCRE.com



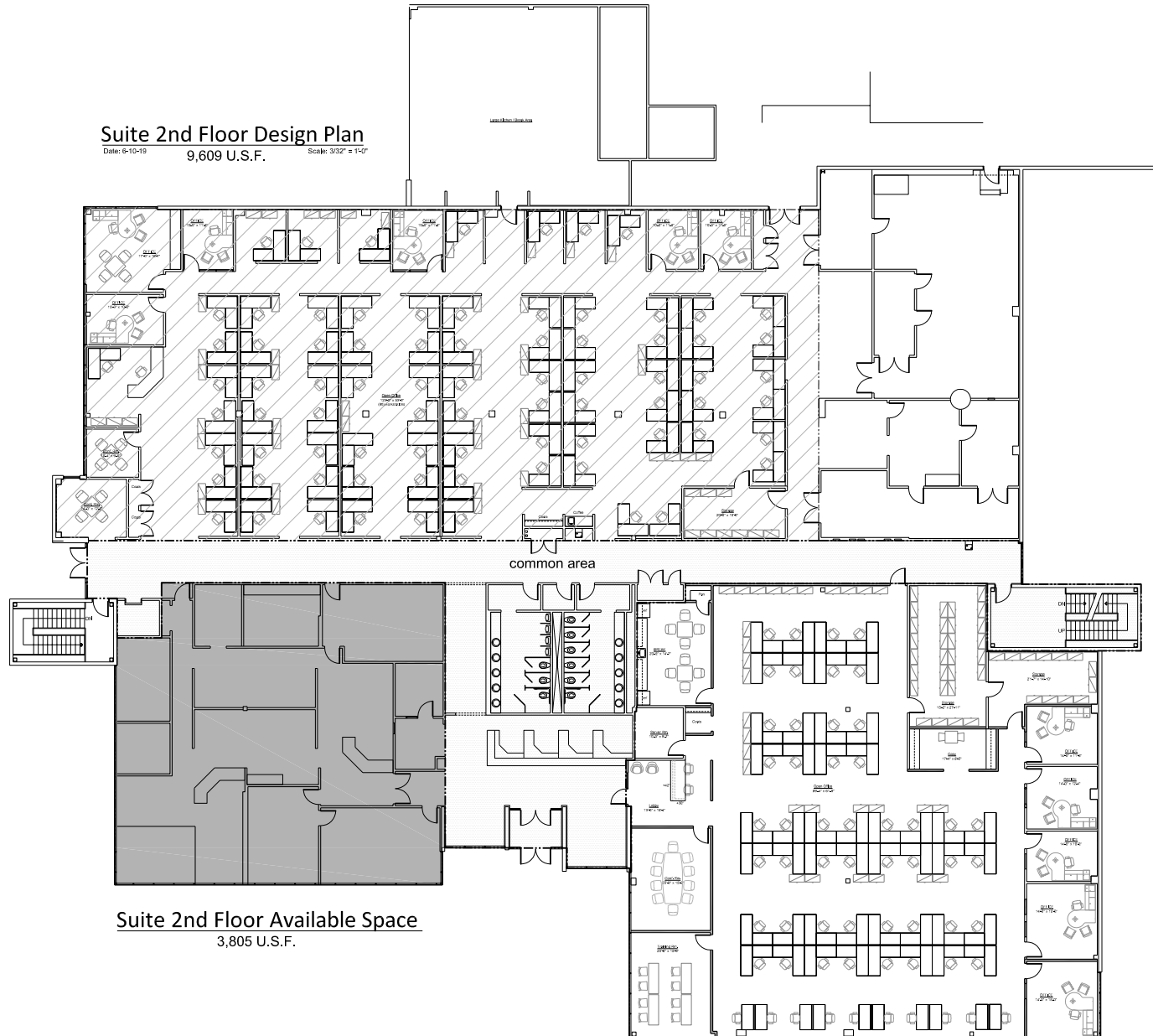
**SUBLEASE**

# The News Herald World Headquarters Office

7085 Mentor Avenue, Willoughby, OH 44094

## Suite 2nd Floor Design Plan

Date: 6-10-19 9,609 U.S.F. Scale: 3/32" = 1'-0"



## Suite 2nd Floor Available Space

3,805 U.S.F.



The information submitted herein is not guaranteed. Although obtained from reliable resources, it is subject to errors, omissions, prior sale and withdrawal from the market without notice. Broker has made no investigation and makes no representation of the property.

**David Wagner**

📞 216.839.2002

✉ DavidWagner@HannaCRE.com

**Anthony DiLallo**

📞 216.839.2035

✉ AnthonyDiLallo@HannaCRE.com



**SUBLEASE**

# The News Herald World Headquarters Office

7085 Mentor Avenue, Willoughby, OH 44094

Willoughby - Mentor, Ohio



The information submitted herein is not guaranteed. Although obtained from reliable resources, it is subject to errors, omissions, prior sale and withdrawal from the market without notice. Broker has made no investigation and makes no representation of the property.

**David Wagner**

📞 216.839.2002

✉ DavidWagner@HannaCRE.com

**Anthony DiLallo**

📞 216.839.2035

✉ AnthonyDiLallo@HannaCRE.com