

# FOR LEASE

## 2,441 SF – 4,352 SF Warehouse Space Available 33801 & 33851 Curtis Boulevard, Eastlake, OH 44095



### PROPERTY OVERVIEW

#### AVAILABLE SUITES

33801 Curtis Boulevard:

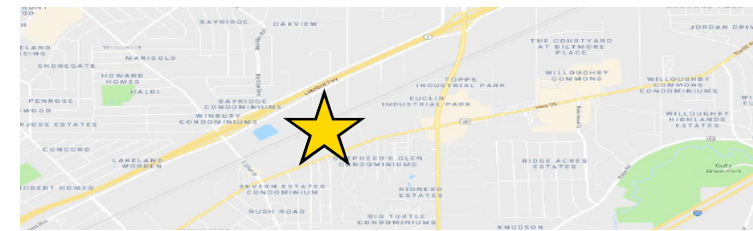
**#113: 2,441 SF**

- 1 drive-in
- 1/2 office, 1/2 warehouse

**#114: 4,352 SF**

- 1 dock & 1 drive-in
- 800 SF office, 3,552 SF warehouse

- Utilities: Individually Metered Gas/Electric
- Convenient Location at Rt 2 & Rt 91
- Great Space at Great Rates, Best Values in the Area
- **Lease Rates:**
  - \$4.25/SF, NNN Warehouse
  - \$8.50/SF, NNN Office
  - Nets = \$2.10/SF



[View in Google Maps](#)



The information submitted herein is not guaranteed. Although obtained from reliable sources, it is subject to errors, omissions, prior sale and withdrawal from the market without notice. Broker has made no investigation and makes no representation of the property.

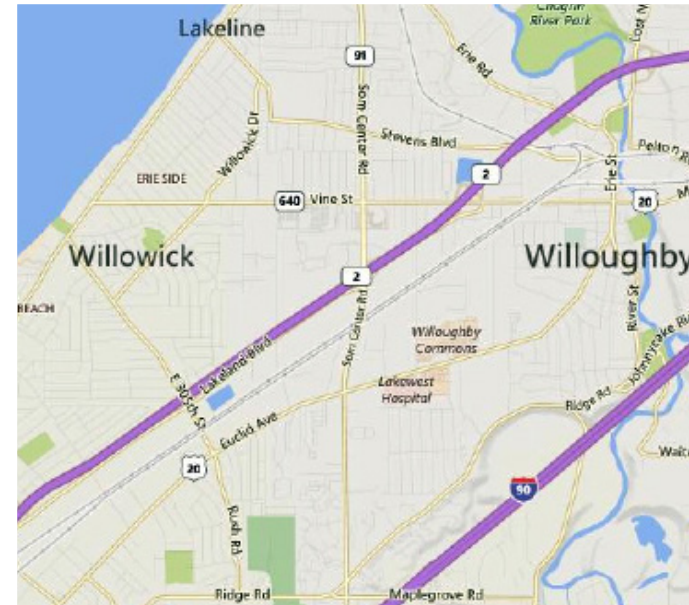
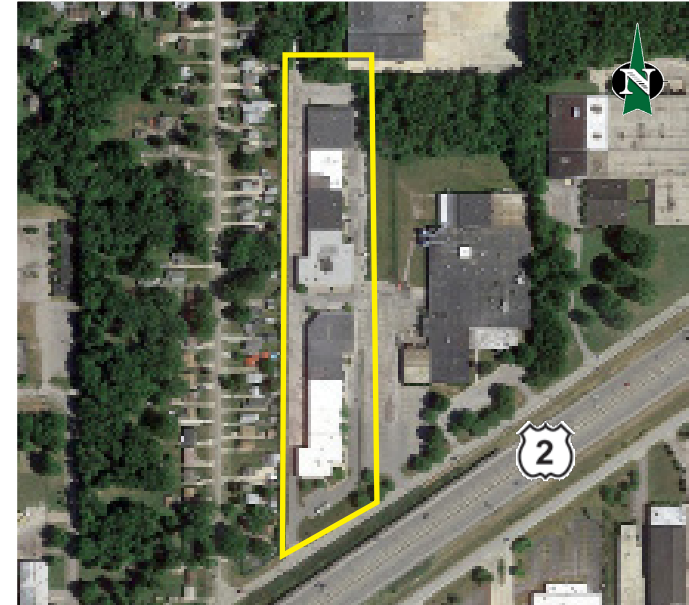
**Michael J. Occhionero**

📞 216.861.5291

✉ [MichaelOcchionero@HannaCRE.com](mailto:MichaelOcchionero@HannaCRE.com)

**FOR LEASE**

**2,441 SF – 4,352 SF Warehouse Space Available**  
33801 & 33851 Curtis Boulevard, Eastlake, OH 44095



The information submitted herein is not guaranteed. Although obtained from reliable resources, it is subject to errors, omissions, prior sale and withdrawal from the market without notice. Broker has made no investigation and makes no representation of the property.

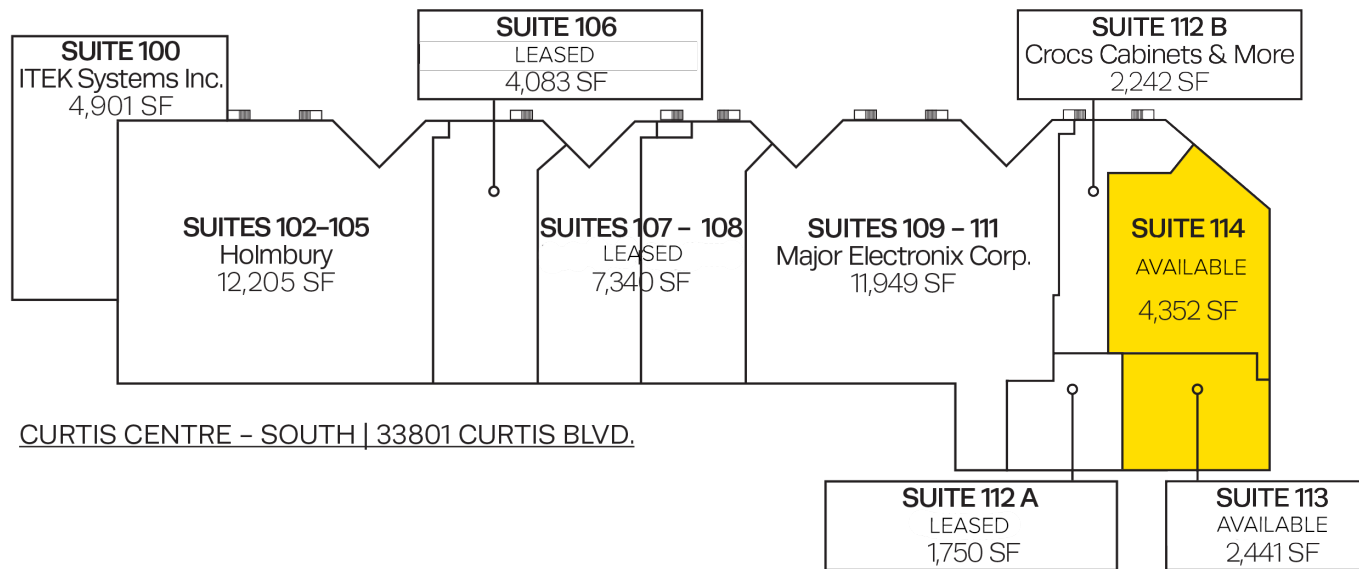
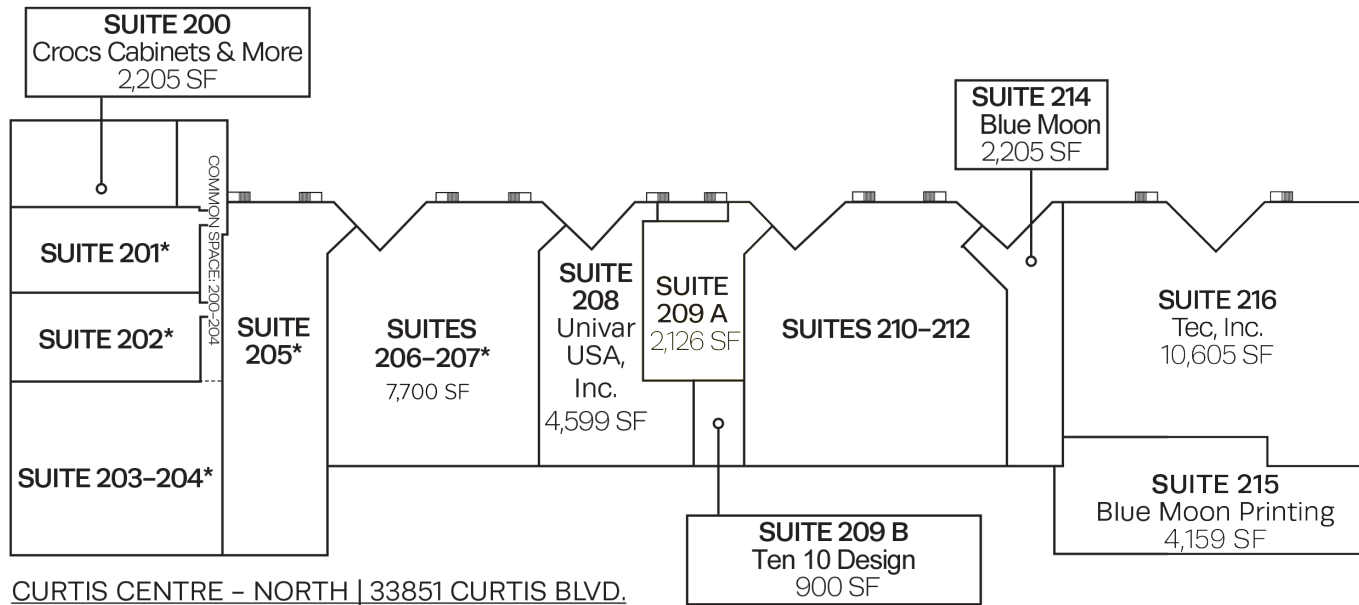
**Michael J. Occhionero**

216.861.5291

MichaelOcchionero@HannaCRE.com

# FOR LEASE

## 2,441 SF – 4,352 SF Warehouse Space Available 33801 & 33851 Curtis Boulevard, Eastlake, OH 44095



The information submitted herein is not guaranteed. Although obtained from reliable resources, it is subject to errors, omissions, prior sale and withdrawal from the market without notice. Broker has made no investigation and makes no representation of the property.

**Michael J. Occhionero**

216.861.5291

MichaelOcchionero@HannaCRE.com