

FOR SUBLEASE

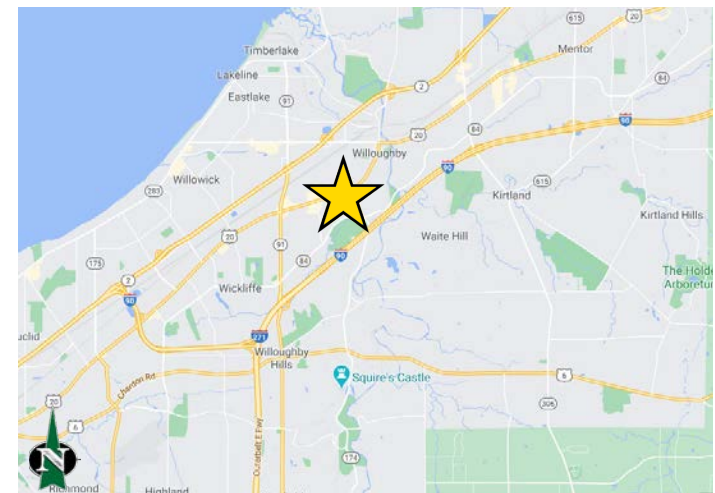
Move-In Ready HQ Quality Manufacturing/Office

4590 Hamann Parkway, Willoughby, OH 44094



PROPERTY OVERVIEW

- 38,800 Total SF Available
 - 19,710 SF Warehouse SF
 - 19,090 SF Office SF
- Fully Updated Facility
- Collaborative Work Environment
- Fully Air Conditioned
- One Dock
- Three Drive-ins (2-12'x12' & 1-10'x12')
- Divisible
- Offered for Sublease at: \$6.00/SF, NNN



[View in Google Maps](#)



The information submitted herein is not guaranteed. Although obtained from reliable resources, it is subject to errors, omissions, prior sale and withdrawal from the market without notice. Broker has made no investigation and makes no representation of the property.

Christopher J. Hondlik, SIOR

📞 216.861.5686

✉ ChrisHondlik@HannaCRE.com

Gregory B. West

📞 216.861.5379

✉ GregoryWest@HannaCRE.com

Nathan Osborne

📞 216.861.5792

✉ NathanOsborne@HannaCRE.com

FOR SUBLEASE

Move-In Ready HQ Quality Manufacturing/Office

4590 Hamann Parkway, Willoughby, OH 44094



The information submitted herein is not guaranteed. Although obtained from reliable resources, it is subject to errors, omissions, prior sale and withdrawal from the market without notice. Broker has made no investigation and makes no representation of the property.

Christopher J. Hondlik, SIOR

📞 216.861.5686

✉️ ChrisHondlik@HannaCRE.com

Gregory B. West

📞 216.861.5379

✉️ GregoryWest@HannaCRE.com

Nathan Osborne

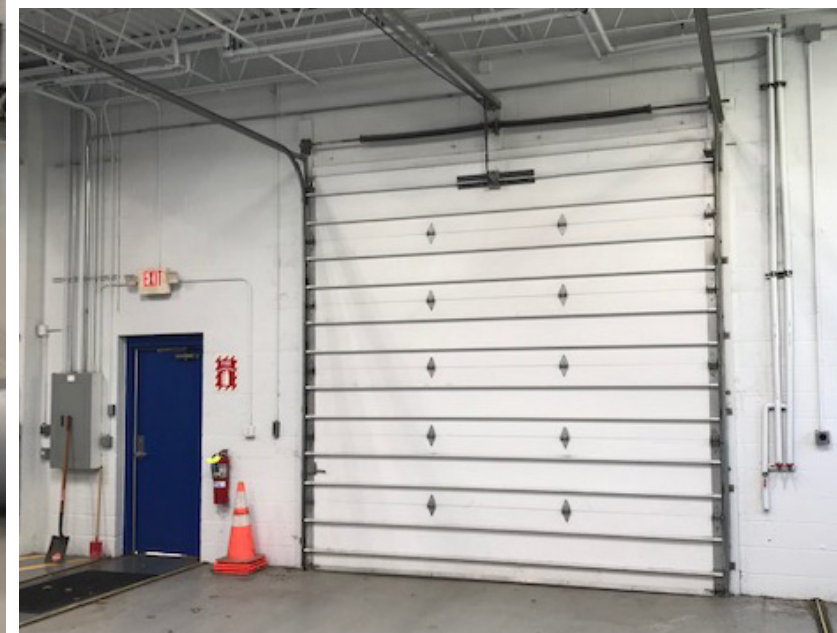
📞 216.861.5792

✉️ NathanOsborne@HannaCRE.com

FOR SUBLEASE

Move-In Ready HQ Quality Manufacturing/Office

4590 Hamann Parkway, Willoughby, OH 44094



The information submitted herein is not guaranteed. Although obtained from reliable resources, it is subject to errors, omissions, prior sale and withdrawal from the market without notice. Broker has made no investigation and makes no representation of the property.

Christopher J. Hondlik, SIOR

📞 216.861.5686

✉️ ChrisHondlik@HannaCRE.com

Gregory B. West

📞 216.861.5379

✉️ GregoryWest@HannaCRE.com

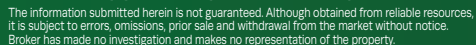
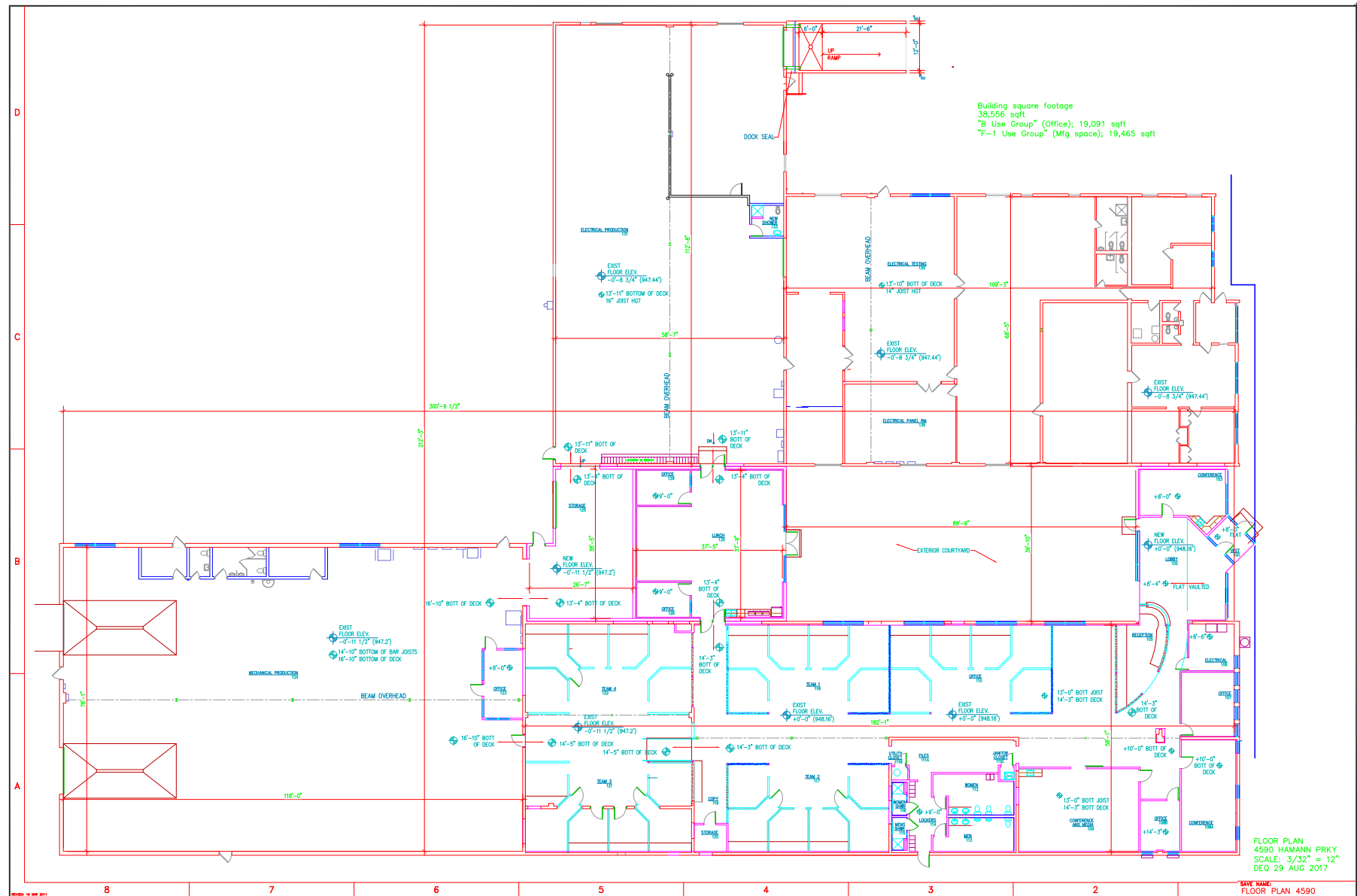
Nathan Osborne

📞 216.861.5792

✉️ NathanOsborne@HannaCRE.com

FOR SUBLEASE **Move-In Ready HQ Quality Manufacturing/Office**
4590 Hamann Parkway, Willoughby, OH 44094

Move-In Ready HQ Quality Manufacturing/Office
4590 Hamann Parkway, Willoughby, OH 44094



✉ ChrisHondlik@HannaCRE.com

✉GregoryWest@HannaCRE.com

✉ NathanOsborne@HannaCRE.com