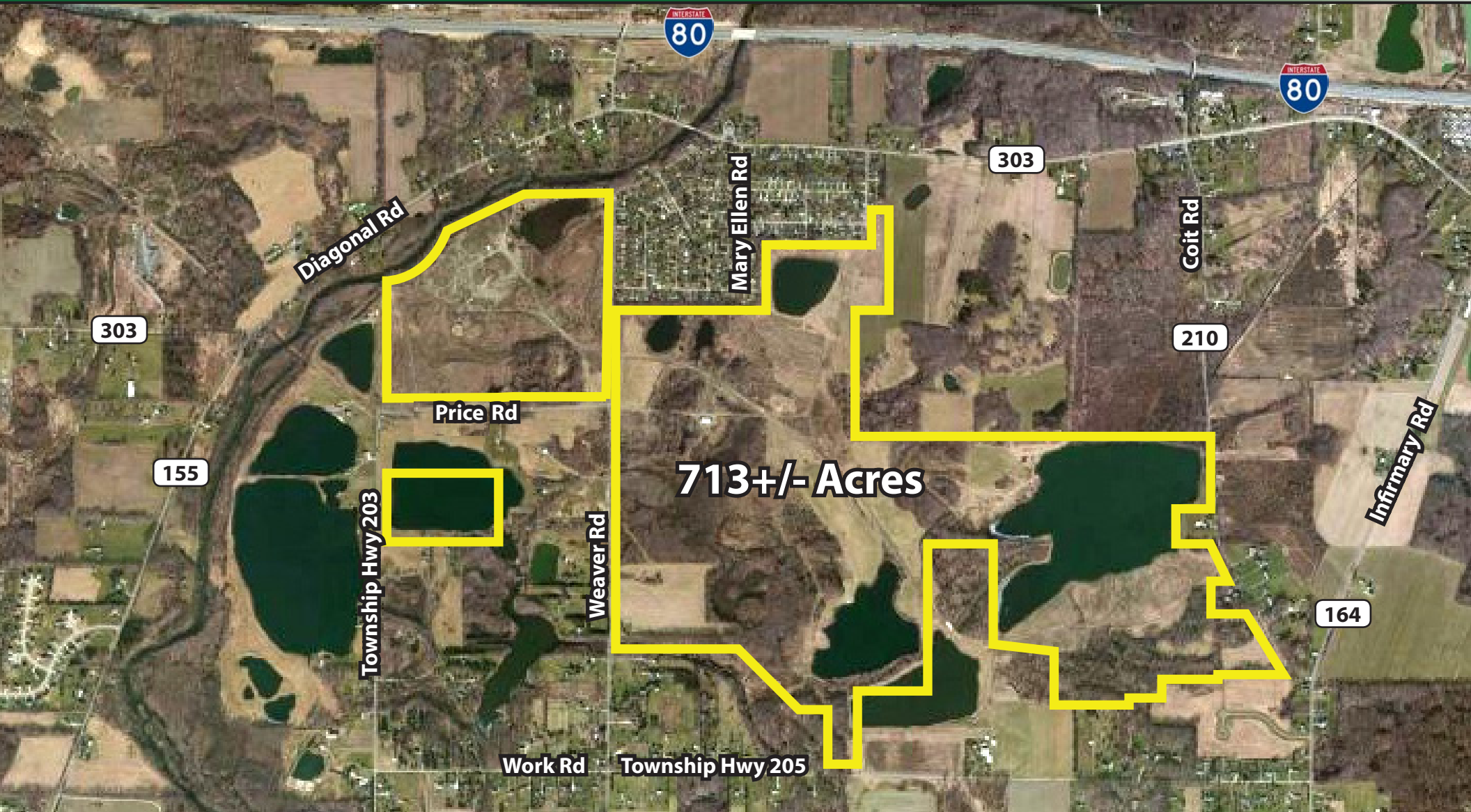


For Sale - 713+/- Acres of Development Land Shalersville, OH 44255



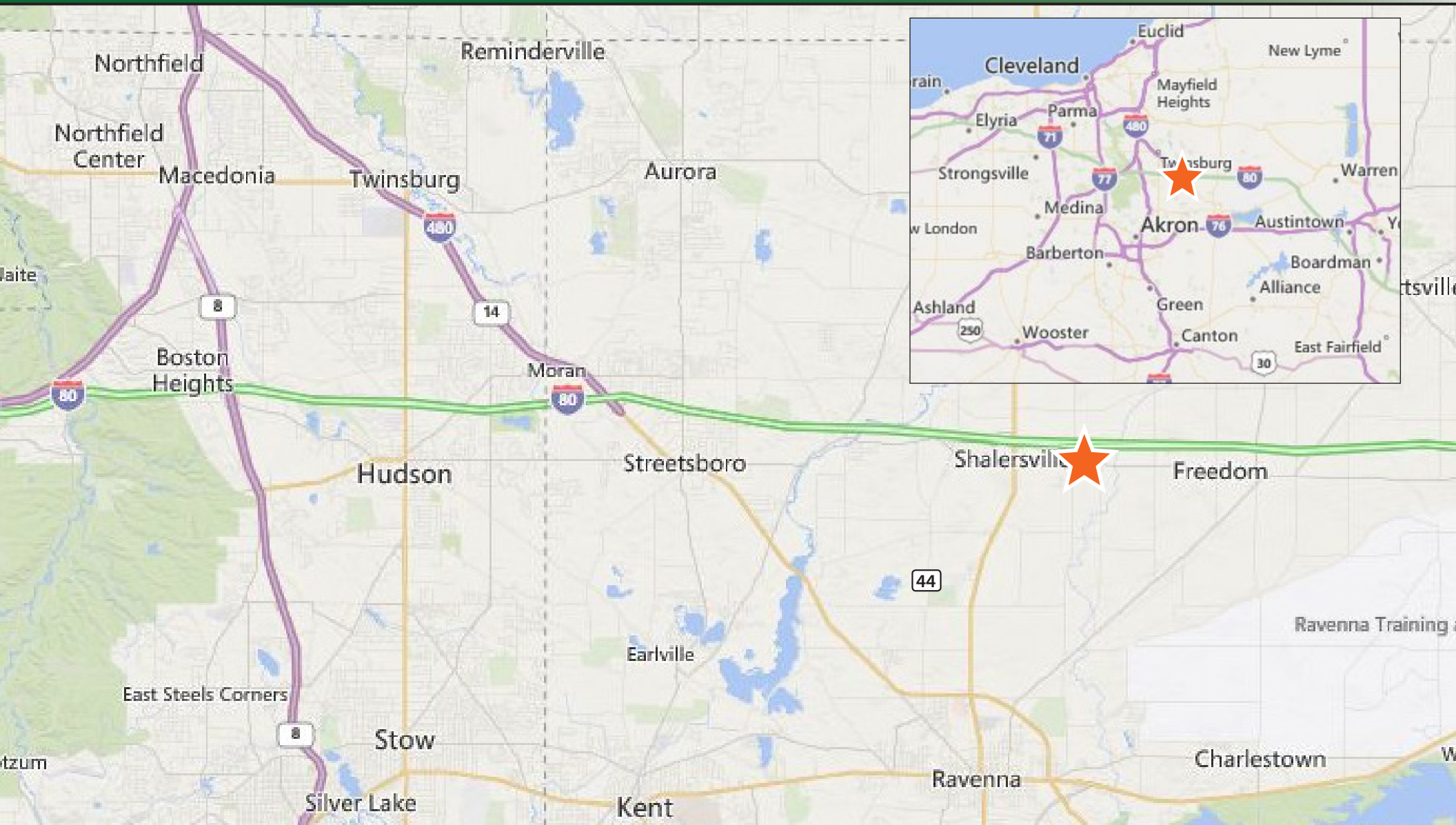
Christopher Hondlik, SIOR
216.861.5686
ChrisHondlik@HannaCRE.com

Andrew Chess
216.861.5061
AndrewChess@HannaCRE.com



The information submitted herein is not guaranteed. Although obtained from reliable resources, it is subject to errors, omissions, prior sale and withdrawal from the market without notice. Broker has made no investigation and makes no representation of the property.

For Sale - 713+/- Acres of Development Land Shalersville, OH 44255



Christopher Hondlik, SIOR
216.861.5686
 ChrisHondlik@HannaCRE.com

Andrew Chess
216.861.5061
AndrewChess@HannaCRE.com



The information submitted herein is not guaranteed. Although obtained from reliable resources, it is subject to errors, omissions, prior sale and withdrawal from the market without notice. Broker has made no investigation and makes no representation of the property.

For Sale - 713+/- Acres of Development Land Shalersville, OH 44255

Demographics

30 Mile Radius

Total Population	2,397,448
Total Households	974,602
Total Housing Units	1,103,892
Average Household Income	\$64,682

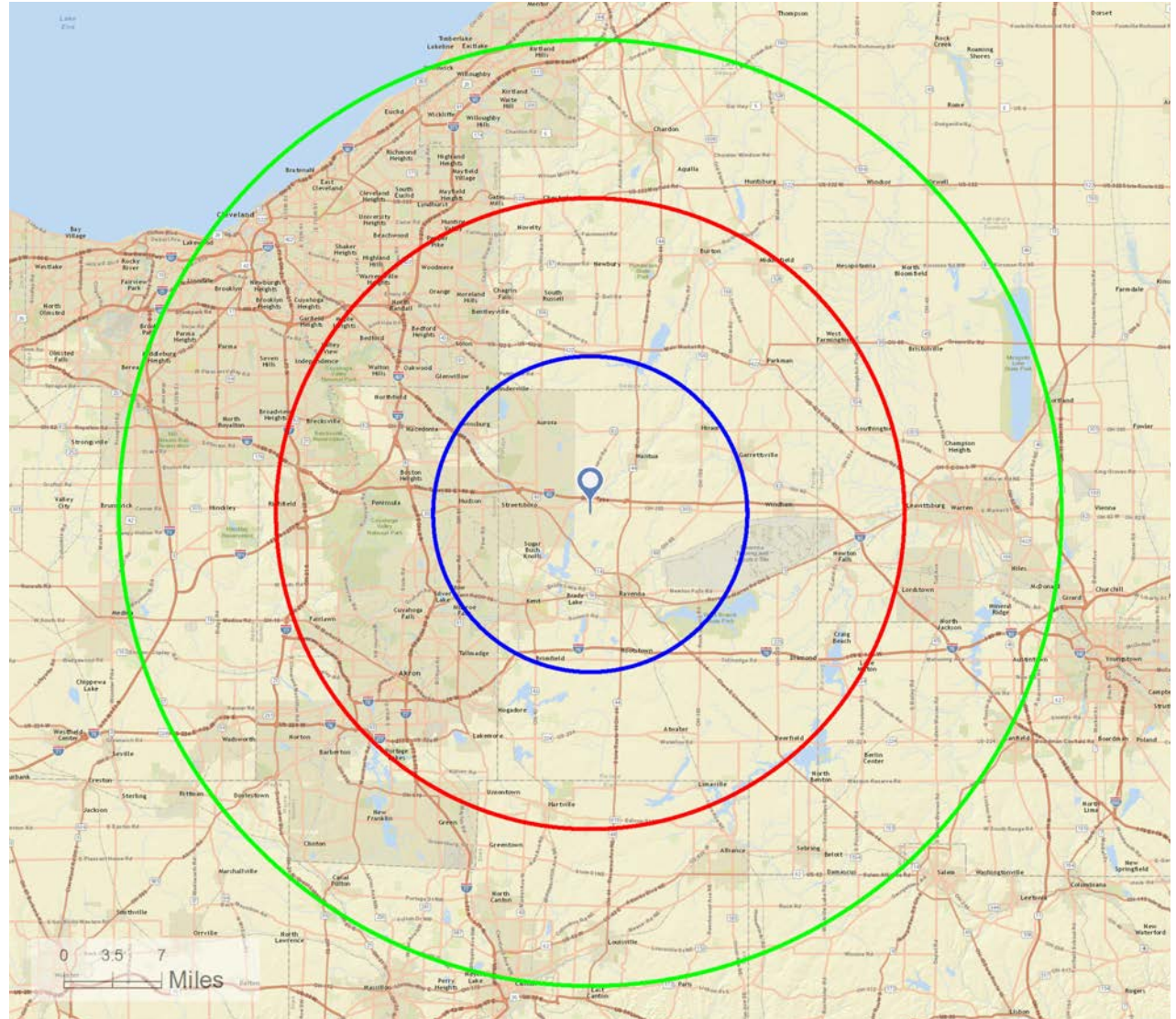
20 Mile Radius

Total Population	807,058
Total Households	323,222
Total Housing Units	356,546
Average Household Income	\$70,975

10 Mile Radius

Total Population	178,744
Total Households	67,242
Total Housing Units	73,313
Average Household Income	\$78,566

Source: U.S. Census Bureau



Christopher Hondlik, SIOR
216.861.5686
ChrisHondlik@HannaCRE.com

Andrew Chess
216.861.5061
AndrewChess@HannaCRE.com

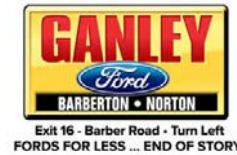


For Sale - 713+/- Acres of Development Land Shalersville, OH 44255

Area Businesses



RR DONNELLEY



HITACHI



Swagelok



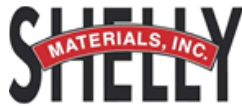
L'ORÉAL



Rockwell Automation



LAKE SIDE
SAND & GRAVEL



Turner



Christopher Hondlik, SIOR
216.861.5686
ChrisHondlik@HannaCRE.com

Andrew Chess
216.861.5061
AndrewChess@HannaCRE.com



For Sale - 713+/- Acres of Development Land Shalersville, OH 44255

Area Hospitals

Akron City Hospital

525 E Market St, Akron, OH

Aurora Medical Center

211 S Chillicothe Rd, Aurora, OH

UH Ahuja Medical Center

3999 Richmond Rd, Beachwood, OH

University Hospitals

4065 Center Rd, Brunswick, OH

University Hospitals

11100 Euclid Ave, Cleveland, OH

University Hospitals Home Care Services

4510 Richmond Rd, Cleveland, OH

Seidman Cancer Center

11100 Euclid Ave, Cleveland, OH

Cleveland Clinic

9500 Euclid Ave, Cleveland, OH

VA Hospital

10701 East Blvd, Cleveland, OH

University Hospitals - Health Center

8185 Washington St # 2, Chagrin Falls, OH

UH Geauga Medical Center

13207 Ravenna Rd, Chardon, OH

Rehabilitation Hospital At Heather Hill

12340 Bass Lake Rd, Chardon, OH

University Hospitals - Health Center

8055 Mayfield Rd, Chesterland, OH

University Hospitals Hudson Health Center

5778 Darrow Rd, Hudson, OH

Mantua Family Medicine

10760 Main St, Mantua, OH

University Hospitals Mantua Health Center

10803 Main St, Mantua, OH

Robinson Memorial Hospital

6847 N Chestnut St, Ravenna, OH

Robinson Memorial Hospital - Hospice

6693 N Chestnut St, Ravenna, OH

Robinson Rehab Center of Streetsboro

9318 State Route 14, Streetsboro, OH

Robinson Memorial Hospital

9424 State Route 14, Streetsboro, OH

Twinsburg Urgent Care

8819 Commons Blvd, Twinsburg, OH

University Hospitals - Health Center

8819 Commons Blvd, Twinsburg, OH

Twinsburg Health Center

8819 Commons Blvd, Twinsburg, OH

Cleveland Clinic - Twinsburg Family Health & Surgery Center

8701 Darrow Rd, Twinsburg, OH

Trumbull Memorial Hospital - Emergency Services

1350 E Market St, Warren, OH

University Hospitals - Health Center

960 Clague Rd, Westlake, OH

Christopher Hondlik, SIOR
216.861.5686
ChrisHondlik@HannaCRE.com

Andrew Chess
216.861.5061
AndrewChess@HannaCRE.com



For Sale - 713+/- Acres of Development Land Shalersville, OH 44255

Area Universities



Christopher Hondlik, SIOR
216.861.5686
ChrisHondlik@HannaCRE.com

Andrew Chess
216.861.5061
AndrewChess@HannaCRE.com



For Sale - 713+/- Acres of Development Land Shalersville, OH 44255

Shalersville

Zip: 44255
Market: Cleveland
County: Portage
Township: Shalersville
School District: Crestwood

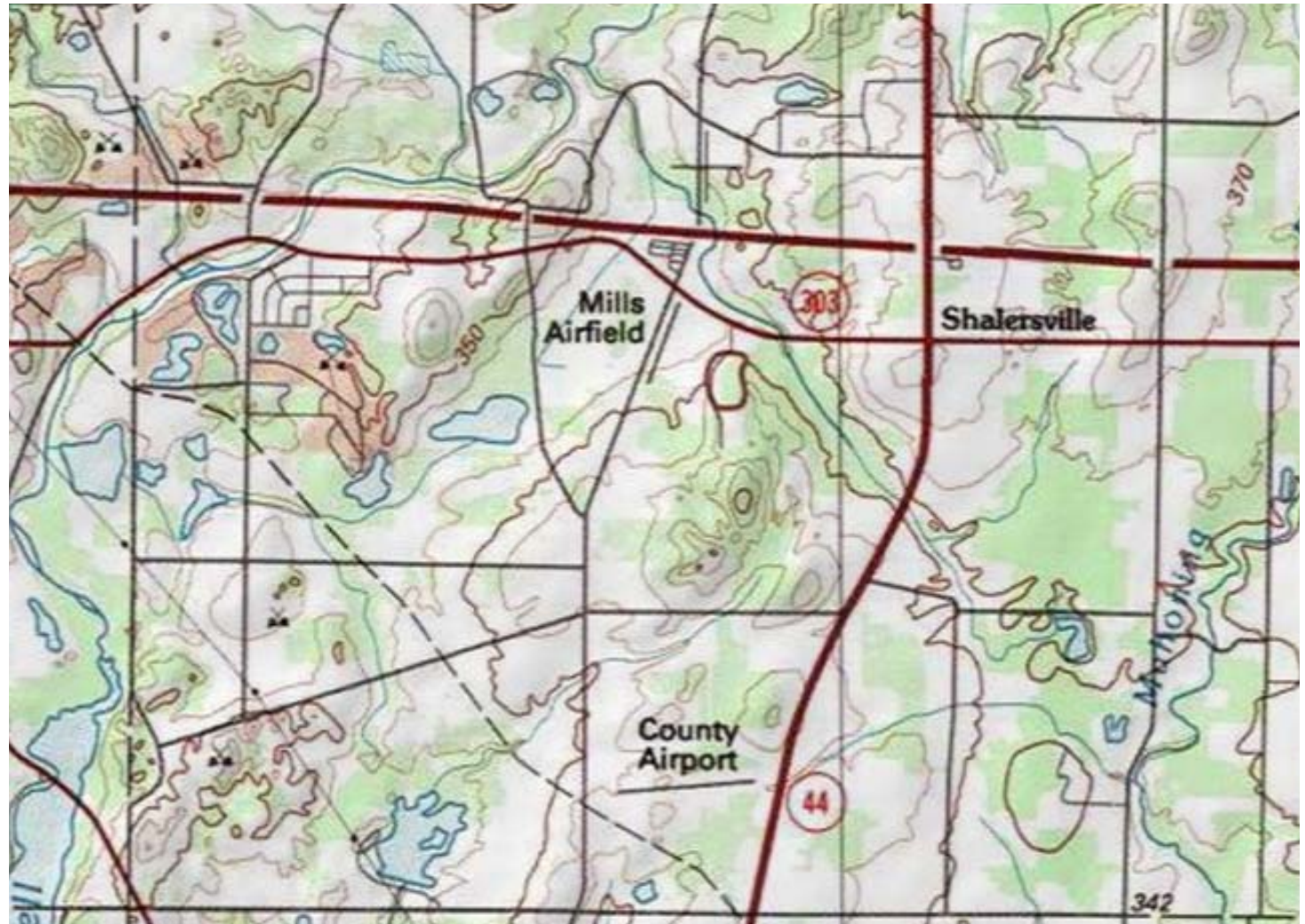
Tax Jurisdiction Sales Tax

Ohio Sales Tax: 5.75%
Portage Co. Sales Tax: 1.25%

Parcel Numbers

33-106-00-00-020-000
33-106-00-00-023-000
33-095-00-00-019-000
33-095-00-00-020-000
33-097-00-00-001-000
33-097-00-00-002-001
33-086-00-00-014-000
33-086-00-00-015-000
33-077-00-00-024-000
33-075-00-00-023-000
33-075-00-00-022-000
33-095-00-00-018-000

Topographical Map






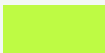
Christopher Hondlik, SIOR
216.861.5686
ChrisHondlik@HannaCRE.com

Andrew Chess
216.861.5061
AndrewChess@HannaCRE.com

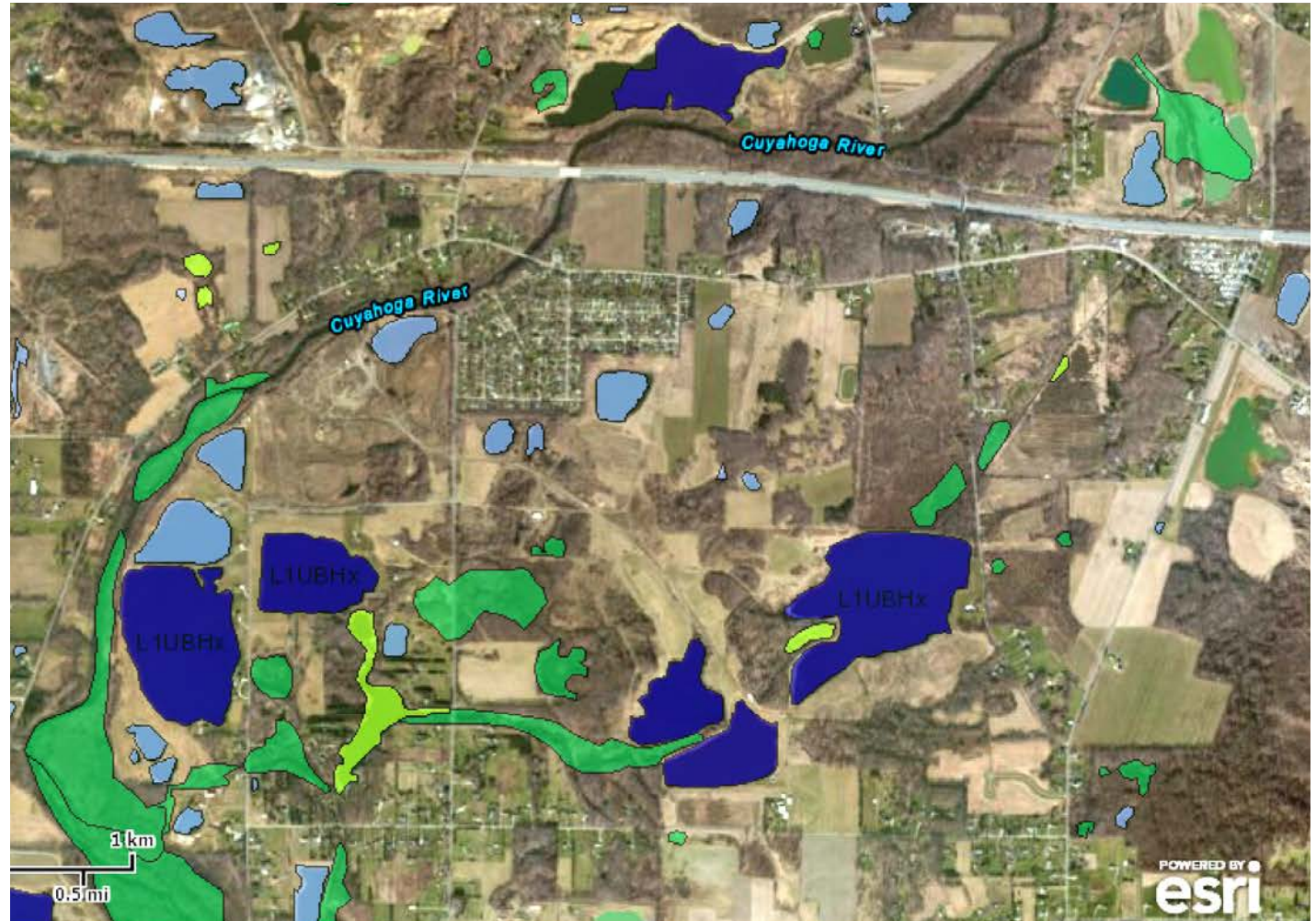


For Sale - 713+/- Acres of Development Land Shalersville, OH 44255

Wetlands

-  Lake
-  Freshwater Pond
-  Freshwater Forested Shrub / Wetland
-  Freshwater Emergent Wetland

Source: U.S. Fish & Wildlife Service



Christopher Hondlik, SIOR
216.861.5686
ChrisHondlik@HannaCRE.com

Andrew Chess
216.861.5061
AndrewChess@HannaCRE.com

