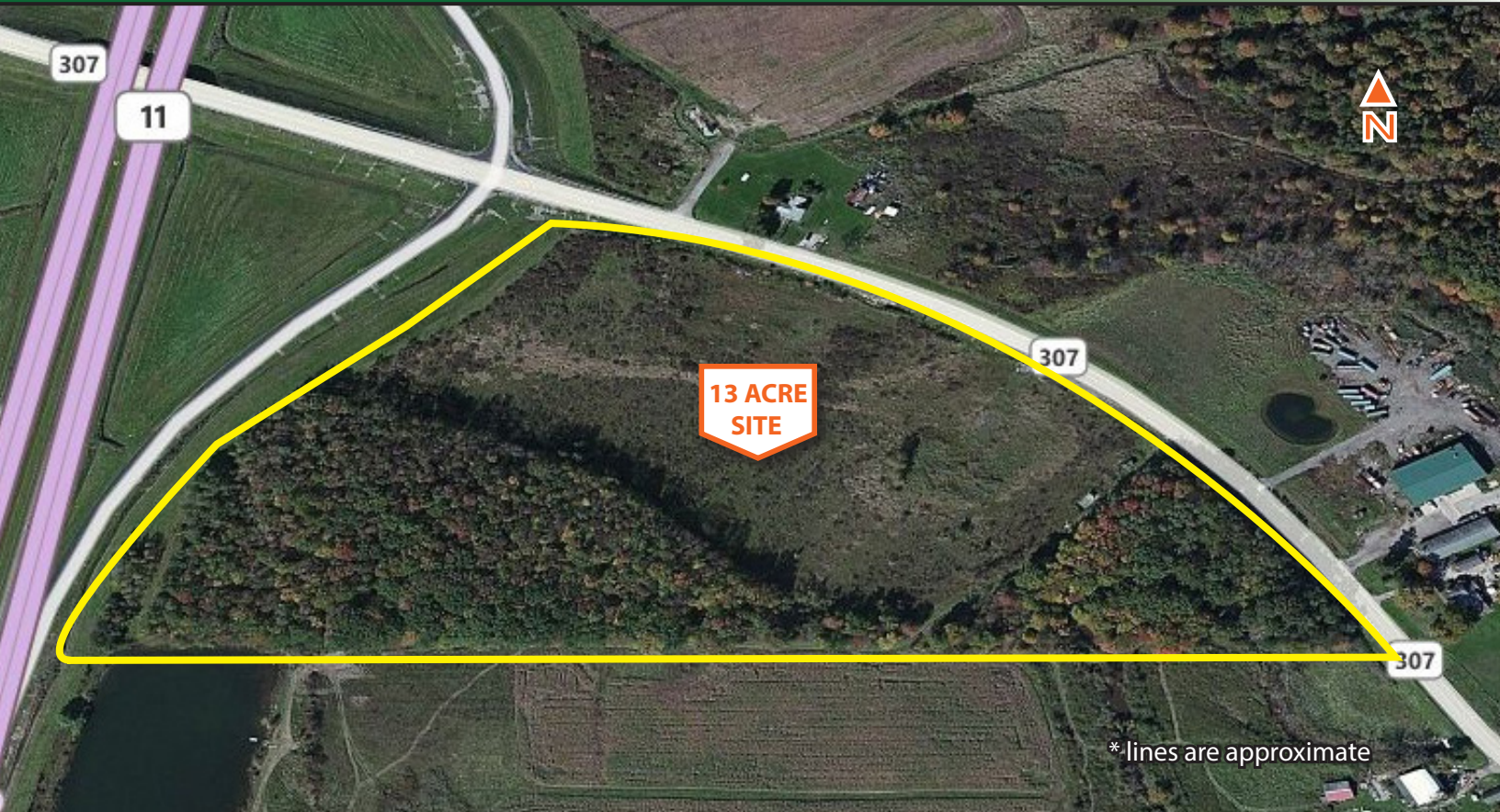
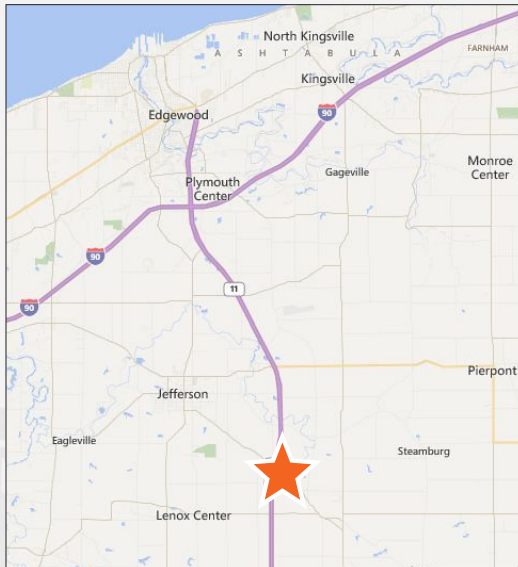


# For Sale - 13+ Acres Commercial Dev. Land Ashtabula County



SR 307 & SR 11, Jefferson, OH 44047



## PROPERTY OVERVIEW

- 13.17± Acres Zoned Commercial
- Parcel #16-031-00-014-00
- Located at State Rt. 307 & State Rt. 11
- Access to I-90

Offered for Sale at: \$5,000/Acre



Christopher J. Hondlik, SIOR  
**216.861.5686**  
ChrisHondlik@HannaCRE.com