

**FOR SALE**

# 1.46 AC Prime Commercial Land

## 3907 Mayfield Road, Cleveland Hts., 44121



### PROPERTY OVERVIEW

- 1.46 Acres for Development
- Great Signalized Corner Location
- 264 Ft. Frontage on Mayfield Road
- 280 Ft. Frontage on Noble Road
- Site is clean and ready for development
- Motivated Seller
- Close proximity to retail destinations such as Cedar Center and Oakwood Commons
- 21,760 Vehicles per Day on Mayfield Road
- Dense population of 129,661 in a three Mile Radius

#### Demographic Snapshot (2010 Census; 2017 Estimates)

	1 Mile	3 Miles	5 Miles
Population	18,587	129,661	314,522
Households	8,069	55,928	137,833
Median HH Income	\$54,560	\$51,724	\$43,356
Average HH Income	\$68,518	\$74,671	\$69,684
Daytime Population	5,191	40,194	214,612

[View in Google Maps](#)



The information submitted herein is not guaranteed. Although obtained from reliable resources, it is subject to errors, omissions, prior sale and withdrawal from the market without notice. Broker has made no investigation and makes no representation of the property.

Randy Markowitz

📞 216.861.5262

✉️ RandyMarkowitz@HannaCRE.com

Gregory West

📞 216.861.5379

✉️ GregoryWest@HannaCRE.com

Nathan Osborne

📞 216.861.5792

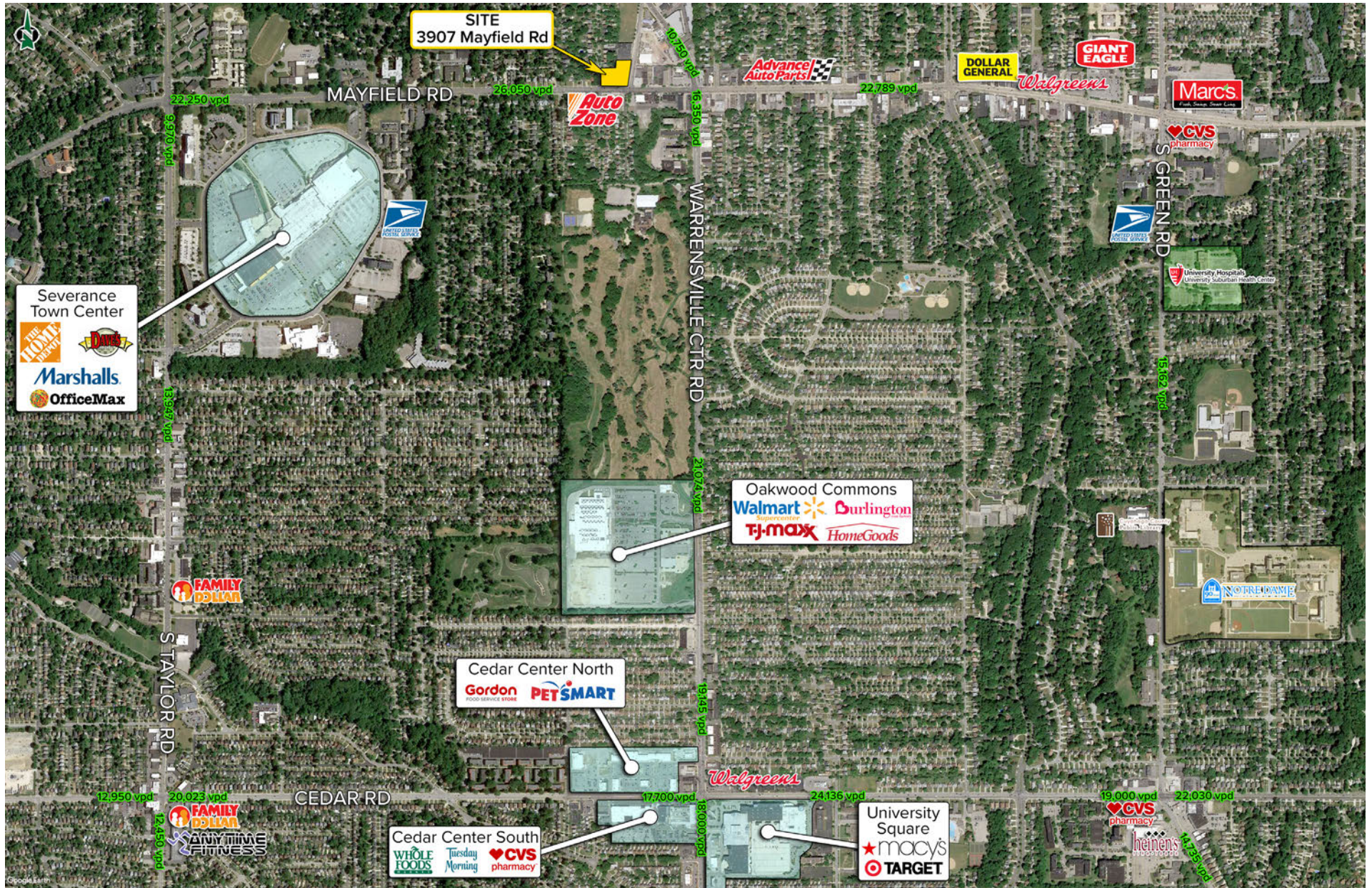
✉️ NathanOsborn@HannaCRE.com



**FOR SALE**

# 1.46 AC Prime Commercial Land

## 3907 Mayfield Road, Cleveland Hts., 44121



The information submitted herein is not guaranteed. Although obtained from reliable resources, it is subject to errors, omissions, prior sale and withdrawal from the market without notice. Broker has made no investigation and makes no representation of the property.

Randy Markowitz

📞 216.861.5262

✉ RandyMarkowitz@HannaCRE.com

Gregory West

📞 216.861.5379

✉ GregoryWest@HannaCRE.com

Nathan Osborne

📞 216.861.5792

✉ NathanOsborn@HannaCRE.com