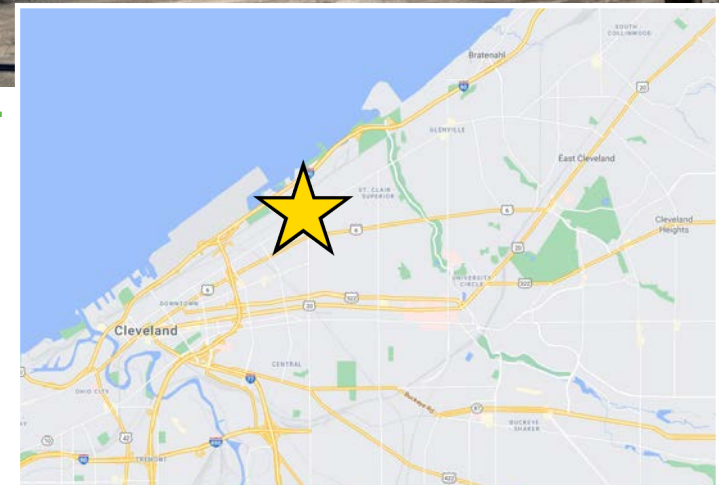
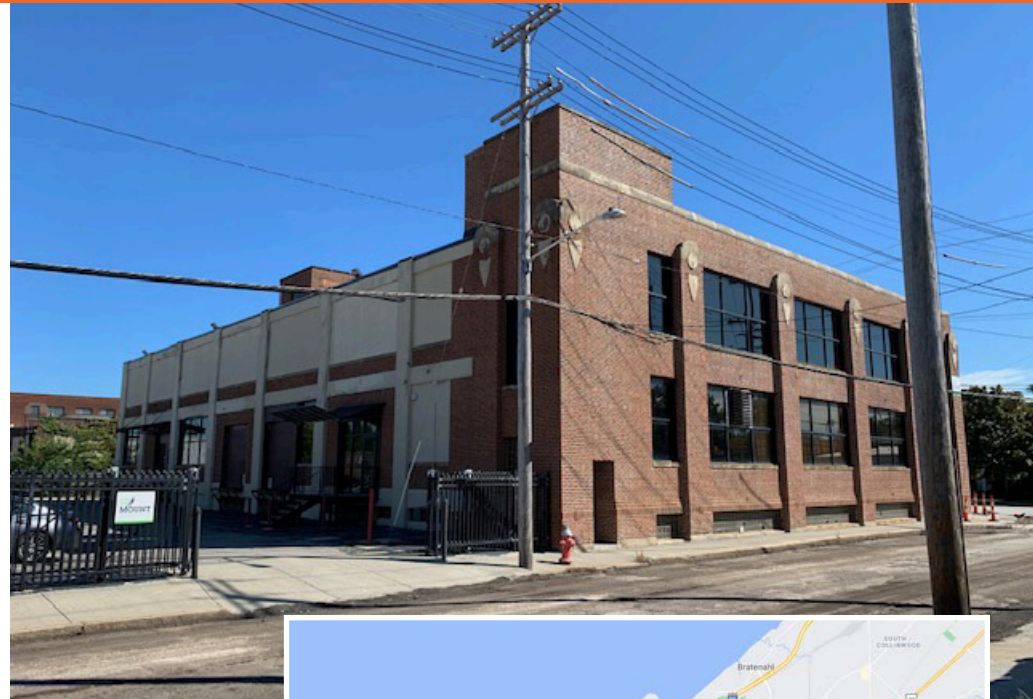


# FOR SALE

## 42,489 SF Office/Warehouse Property on 0.64 Acres 1306 E 55th Street, Cleveland, OH 44103

\* PRICE REDUCTION \*



[View in Google Maps](#)

### PROPERTY OVERVIEW

- Former Printing Facility – 42,489 SF Total Area on Three Stories
- 8,000 SF Office Area
- 34,489 SF Warehouse/Production Area
- 14,163 SF Per Floor
- Masonry Construction
- Located on 0.64 Acres
- Hardwood Floors
- Fully Sprinklered
- Freight Elevator
- 10'–12' Clear Height
- 480 Volt/2,000 Amp/3 Phase Power
- Two Docks
- 40 Car Parking
- Fenced Lot
- Convenient Access to I-90/Route 2
- Offered for Sale at: **WAS** – \$975,000  
**NOW** – \$910,000



The information submitted herein is not guaranteed. Although obtained from reliable resources, it is subject to errors, omissions, prior sale and withdrawal from the market without notice. Broker has made no investigation and makes no representation of the property.

**David Stover, SIOR**

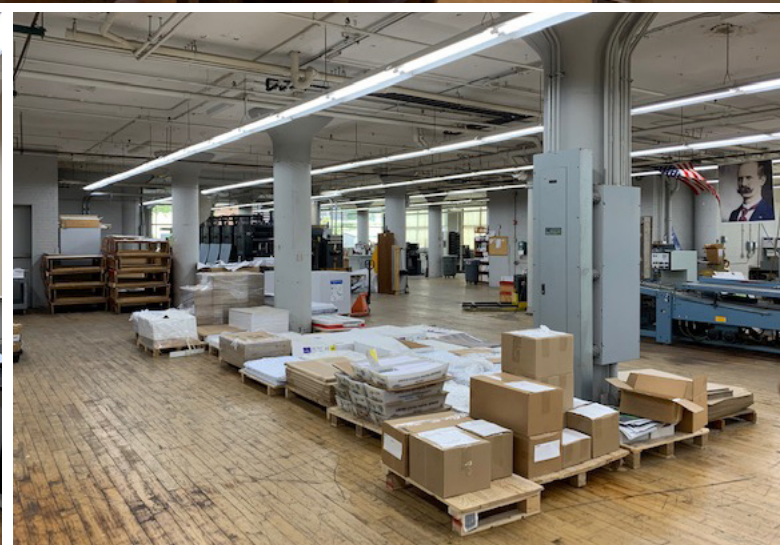
📞 216.839.2012

✉ [DavidStover@HannaCRE.com](mailto:DavidStover@HannaCRE.com)



**FOR SALE**

**42,489 SF Office/Warehouse Property on 0.64 Acres**  
**1306 E 55th Street, Cleveland, OH 44103**



The information submitted herein is not guaranteed. Although obtained from reliable resources, it is subject to errors, omissions, prior sale and withdrawal from the market without notice. Broker has made no investigation and makes no representation of the property.

**David Stover, SIOR**

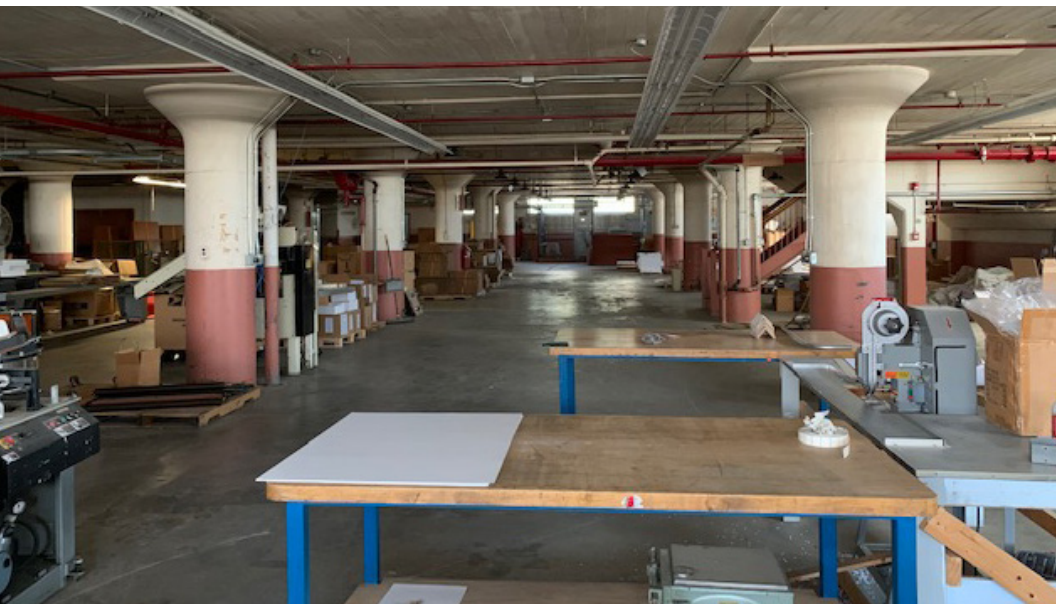
📞 216.839.2012

✉ [DavidStover@HannaCRE.com](mailto:DavidStover@HannaCRE.com)



**FOR SALE**

**42,489 SF Office/Warehouse Property on 0.64 Acres**  
**1306 E 55th Street, Cleveland, OH 44103**



The information submitted herein is not guaranteed. Although obtained from reliable resources, it is subject to errors, omissions, prior sale and withdrawal from the market without notice. Broker has made no investigation and makes no representation of the property.

**David Stover, SIOR**

📞 216.839.2012

✉ [DavidStover@HannaCRE.com](mailto:DavidStover@HannaCRE.com)