

**RETAIL SPACE  
FOR LEASE**



## **UPSCALE/HIGH END RETAIL IN WESTLAKE**

**2911 CENTER RIDGE RD, WESTLAKE, OH 44145**

**CONTACT:**

**John Lubinski**

[JohnLubinski@HannaCRE.com](mailto:JohnLubinski@HannaCRE.com)

330.958.7291

# 2,180 SF AVAILABLE FOR LEASE

29111 Center Ridge Rd, Westlake, OH 44145

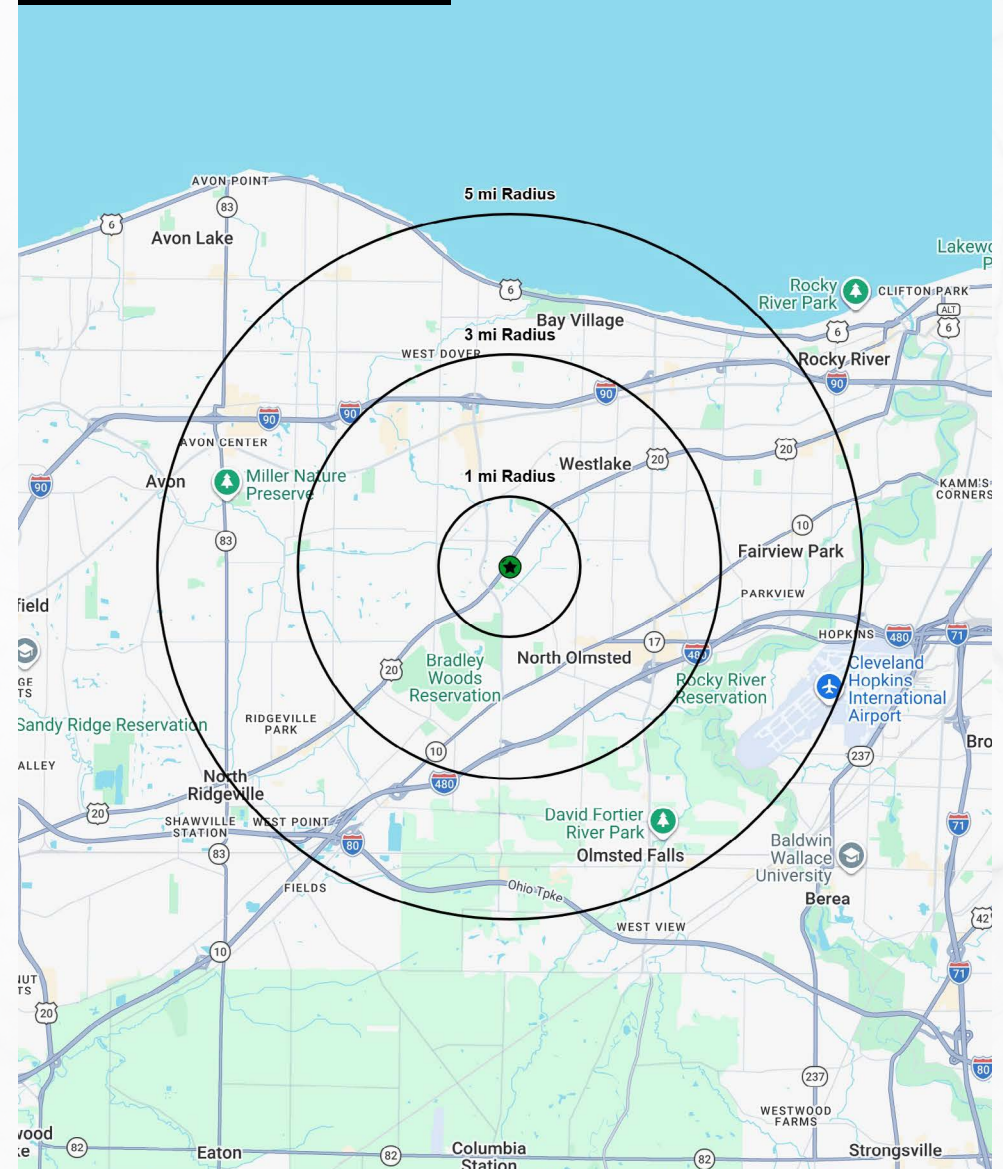
## PROPERTY OVERVIEW

### PROPERTY SUMMARY

- 2,180 SF Upscale/ High End Retail – For Lease
- Located next to Luxury Spa West in Westlake near Crocker Park
- Perfect for Jeweler / Boutique Fitness or Wellness / Fashion & Beauty Products
- 65+ Parking Spots with employee entrance/parking in back
- **Contact broker and visit: <http://www.hannacre.com/johnlubinski> for more info**

DEMOGRAPHICS	1-MILE	3-MILE	5-MILE
POPULATION	7,609	62,625	151,639
HOUSEHOLDS	3,157	26,783	64,150
AVERAGE HH INCOME	\$155,499	\$156,933	\$152,616
MEDIAN HH INCOME	\$107,524	\$112,183	\$108,414
DAYTIME POPULATION	6,773	54,574	110,773

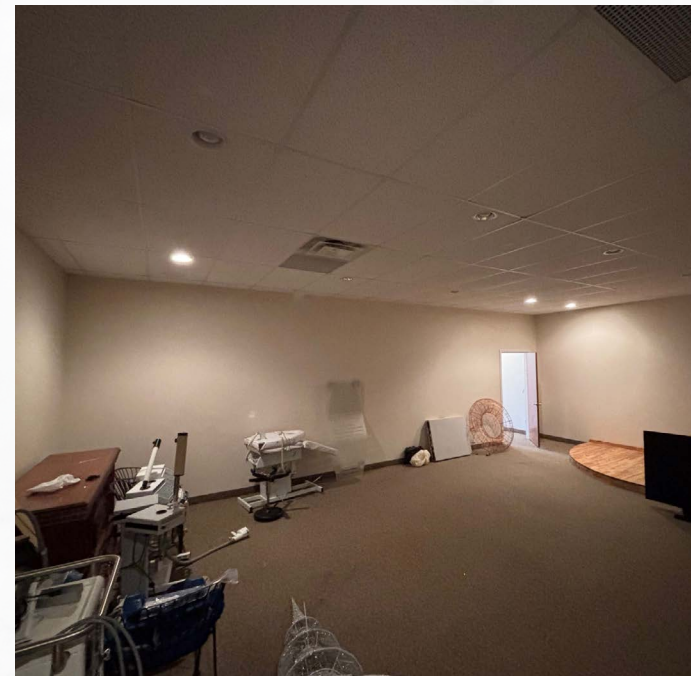
CLICK HERE FOR  
GOOGLE MAPS VIEW



# 2,180 SF AVAILABLE FOR LEASE

29111 Center Ridge Rd, Westlake, OH 44145

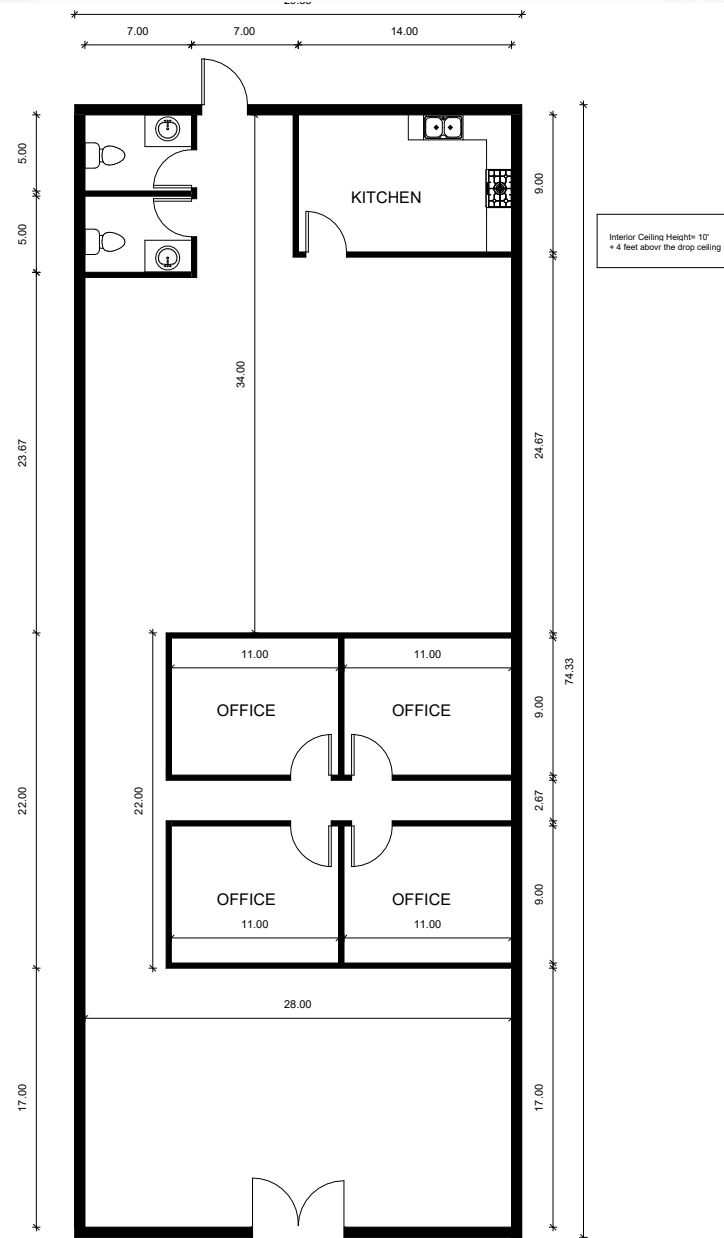
PICTURES



# 2,180 SF AVAILABLE FOR LEASE

29111 Center Ridge Rd, Westlake, OH 44145

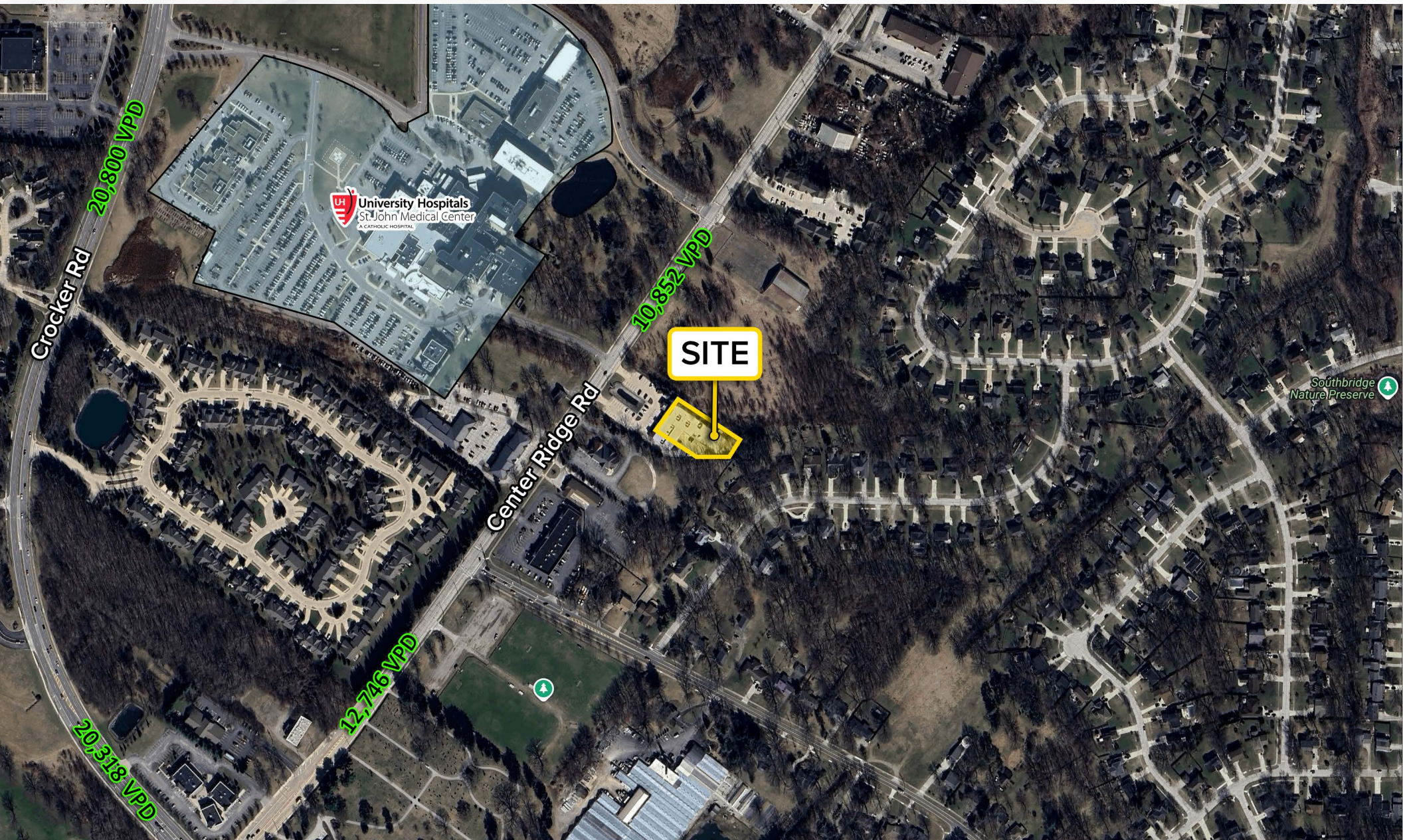
## SITE PLAN



# 2,180 SF AVAILABLE FOR LEASE

29111 Center Ridge Rd, Westlake, OH 44145

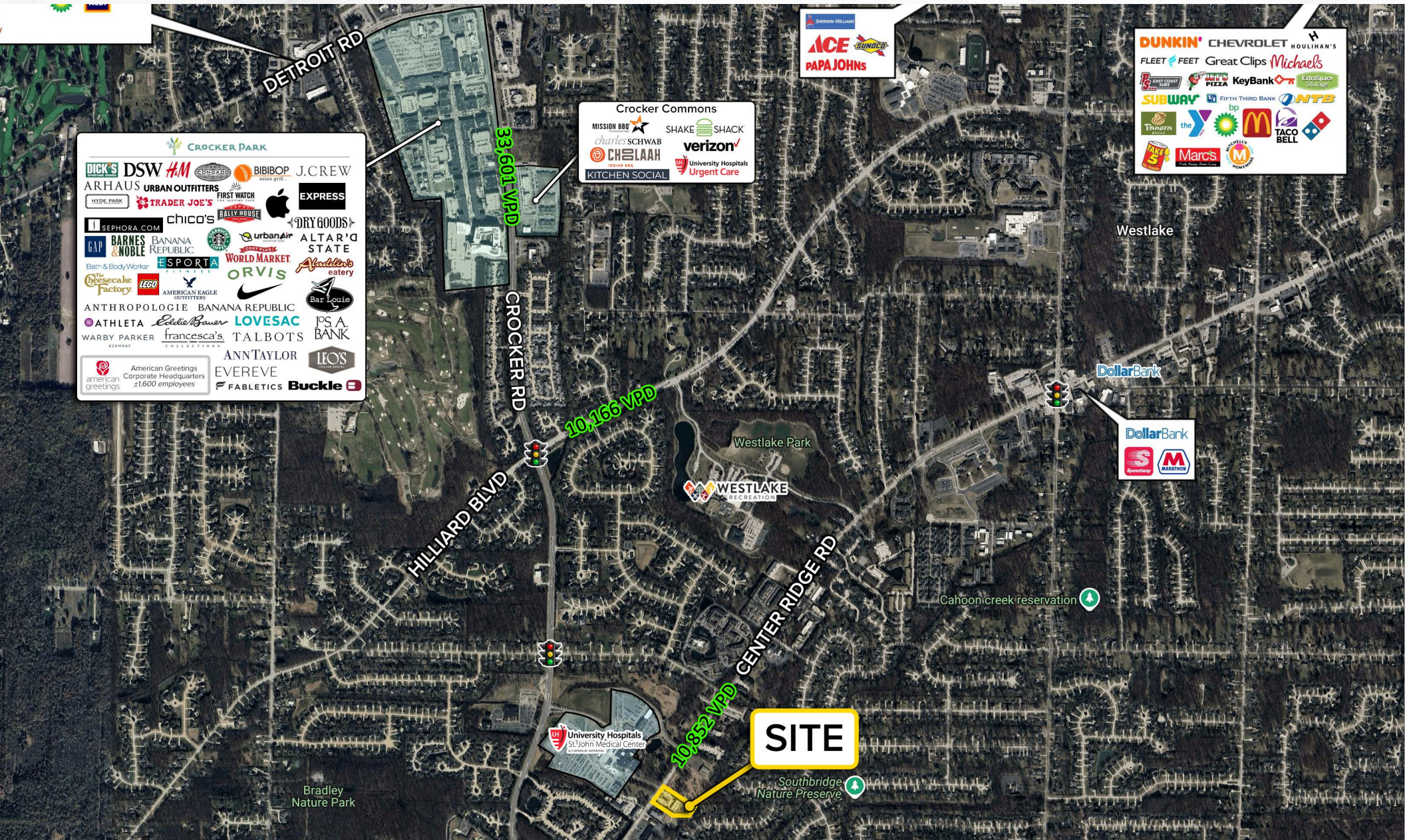
MICRO AERIAL



# 2,180 SF AVAILABLE FOR LEASE

29111 Center Ridge Rd, Westlake, OH 44145

MACRO AERIAL



**CROCKER PARK**

DICK'S SPORTS & SHOE, DSW, H&M, BIBIBOP, J.CREW, ARHAUS, URBAN OUTFITTERS, FIRST WATCH, EXPRESS, HYDRA PARK, TRADER JOE'S, APPLE, SEPHORA.COM, chico's, BALLY HOUSE, DRY GOODS, GAP, BARNES & NOBLE, BANANA REPUBLIC, STARBUCKS, urbanair, ALTA R'D STATE, Bath & Body Works, ESPORTA, WORLD MARKET, Aladdin's eatery, The Cheesecake Factory, LEGO, AMERICAN EAGLE OUTFITTERS, NIKE, Bar Louie, ANTHROPOLOGIE, BANANA REPUBLIC, ATHLETA, Eddie Bauer, LOVESAC, JPS A. BANK, WARBY PARKER, francesca's, TALBOTS, ANN TAYLOR, IFO'S, american greetings, American Greetings Corporate Headquarters #1,600 employees, EVEREVE, FABLETICS, Buckle

**Crocker Commons**

MISSION BBQ, SHAKE SHACK, charles SCHWAB, verizon, CHELAAH, University Hospitals Urgent Care, KITCHEN SOCIAL

ACE HARDWARE, SUNOCO, PAPA JOHN'S

DUNKIN', CHEVROLET HOULIHAN'S, FLEET FEET, Great Clips, Michaels, KeyBank, ExtraSpace, SUBWAY, FIFTH THIRD BANK, NTE, TRANSFER, the, McDonald's, TACO BELL, Marcs, M