

FOR SALE



1919 E 107TH ST, CLEVELAND, OH 44106

Julie Sabroff
JulieSabroff@HannaCRE.com
216.839.2029

CONTACT:

Bob Biggar
BobBiggar@HannaCRE.com
216.839.2030

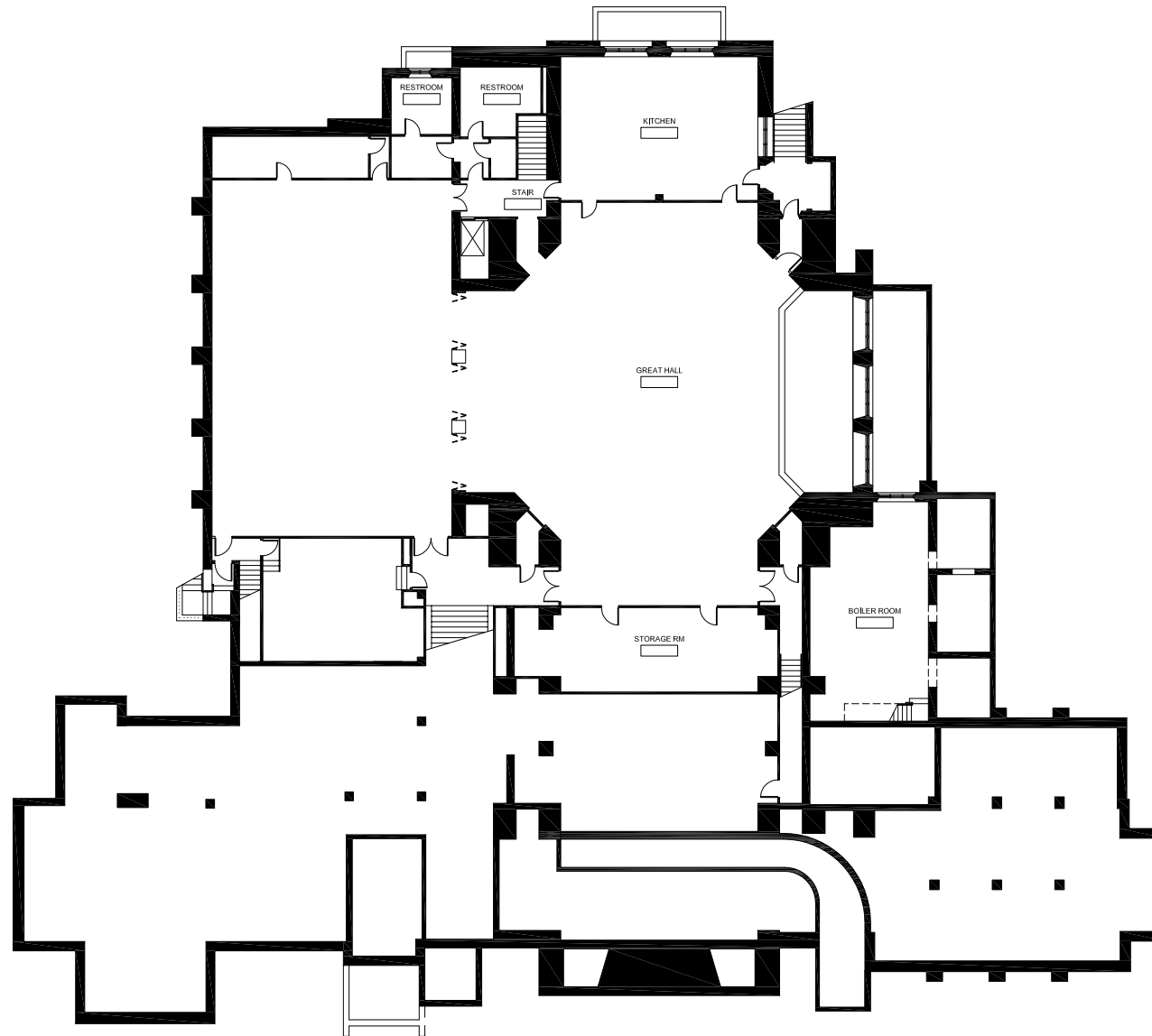
PROPERTY SUMMARY

- 54,081 SF Building on 1.64 Acres
- In heart of University Circle, overlooking Wade Lagoon and at the epicenter of development
- Located across the street from Circle Square which is a 1,000,000 square foot mixed-use multi-year development
- Located in an Opportunity Zone
- One of the most iconic buildings gracing the University Circle skyline
- At the intersection of Chester Ave and Martin Luther King Blvd with 28,000 vehicles per day
- Approximately 45 Parking Spaces
- Zoned MF-E3 Multi-Family

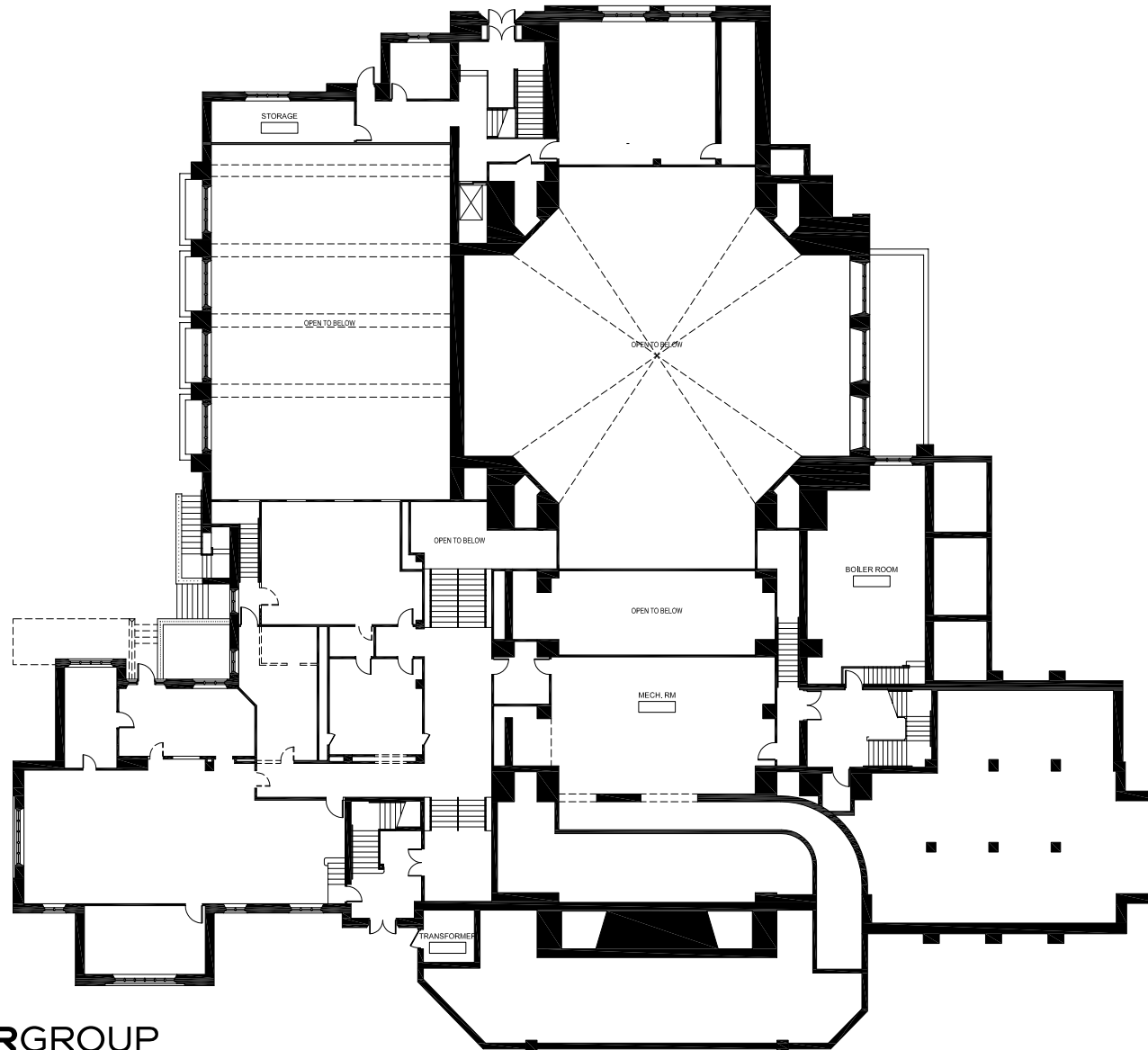
DEMOGRAPHICS	1-MILE	3-MILE	5-MILE
POPULATION	21,442	139,548	317,826
HOUSEHOLDS	9,719	64,673	145,281
AVERAGE HH INCOME	\$68,501	\$68,161	\$80,687
MEDIAN HH INCOME	\$44,015	\$46,831	\$55,992
DAYTIME POPULATION	157,050	206,199	330,518

CLICK HERE FOR
GOOGLE MAPS VIEW

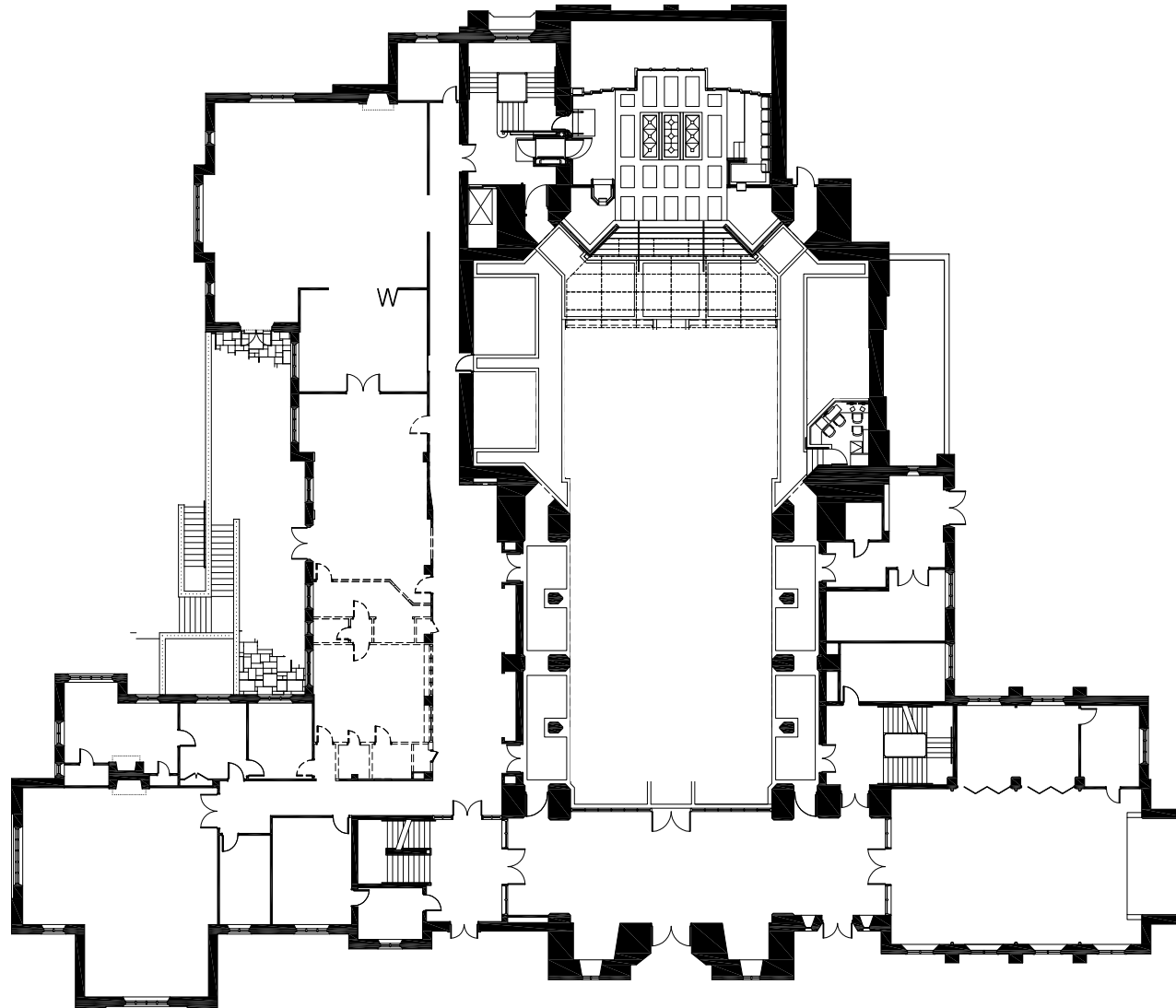




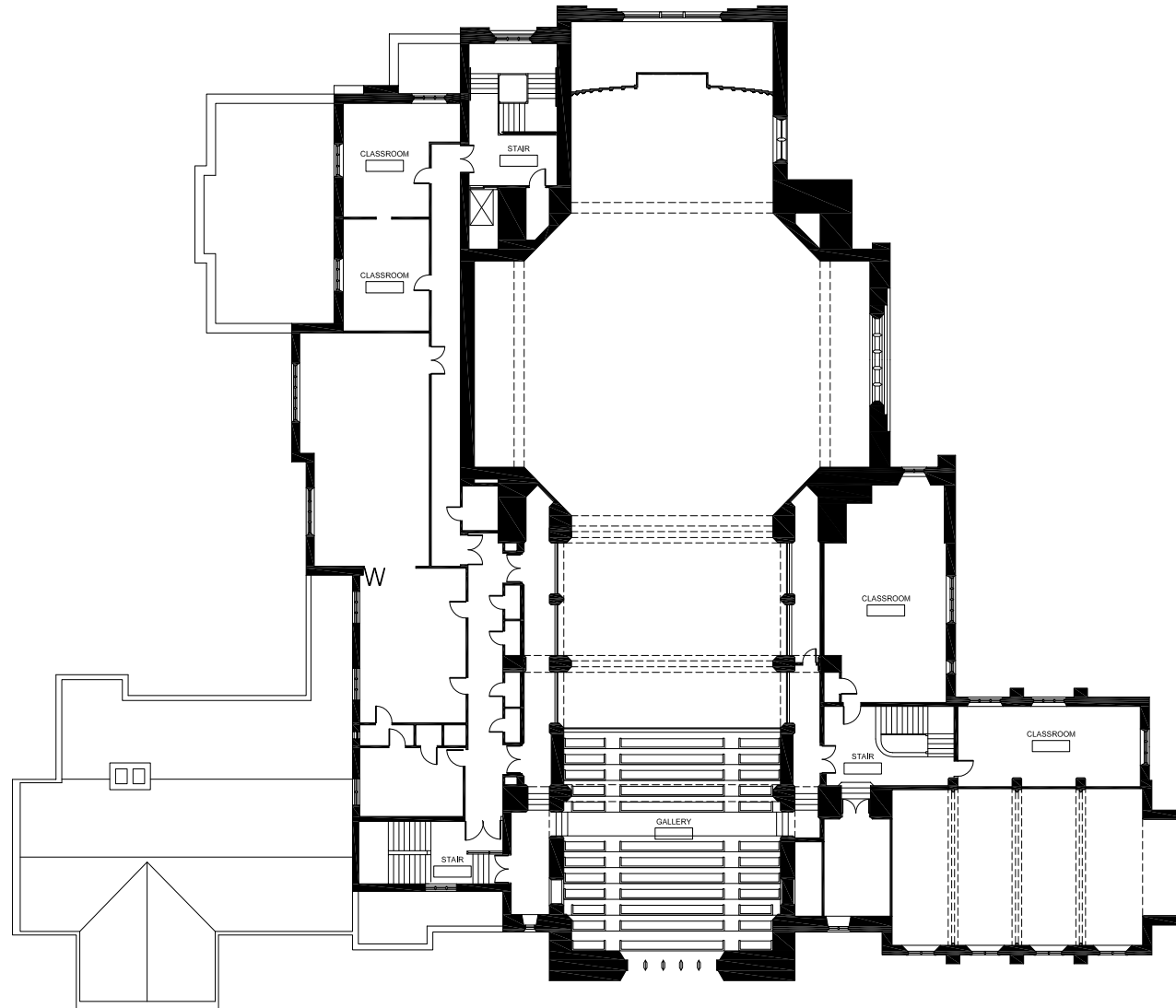
LEVEL 00 FLOOR PLAN (EXISTING)



LEVEL 01 FLOOR PLAN (EXISTING)



LEVEL 02 FLOOR PLAN (EXISTING)



LEVEL 03 FLOOR PLAN (EXISTING)

1919 E 107TH ST, CLEVELAND, OH 44106

EXTERIOR PHOTOS



1919 E 107TH ST, CLEVELAND, OH 44106

INTERIOR PHOTOS



1919 E 107TH ST, CLEVELAND, OH 44106

MICRO AERIAL



