

**840 SF OFFICE
UNIT FOR LEASE**

SITE

RENAISSANCE PKWY



OFFICE UNIT FOR LEASE

4473 Renaissance Pkwy, Warrensville Heights, OH 44128

CONTACT:

Kevin Kuczynski

KevinKuczynski@HannaCRE.com

(216) 861-5684

840 SF OFFICE UNIT FOR LEASE

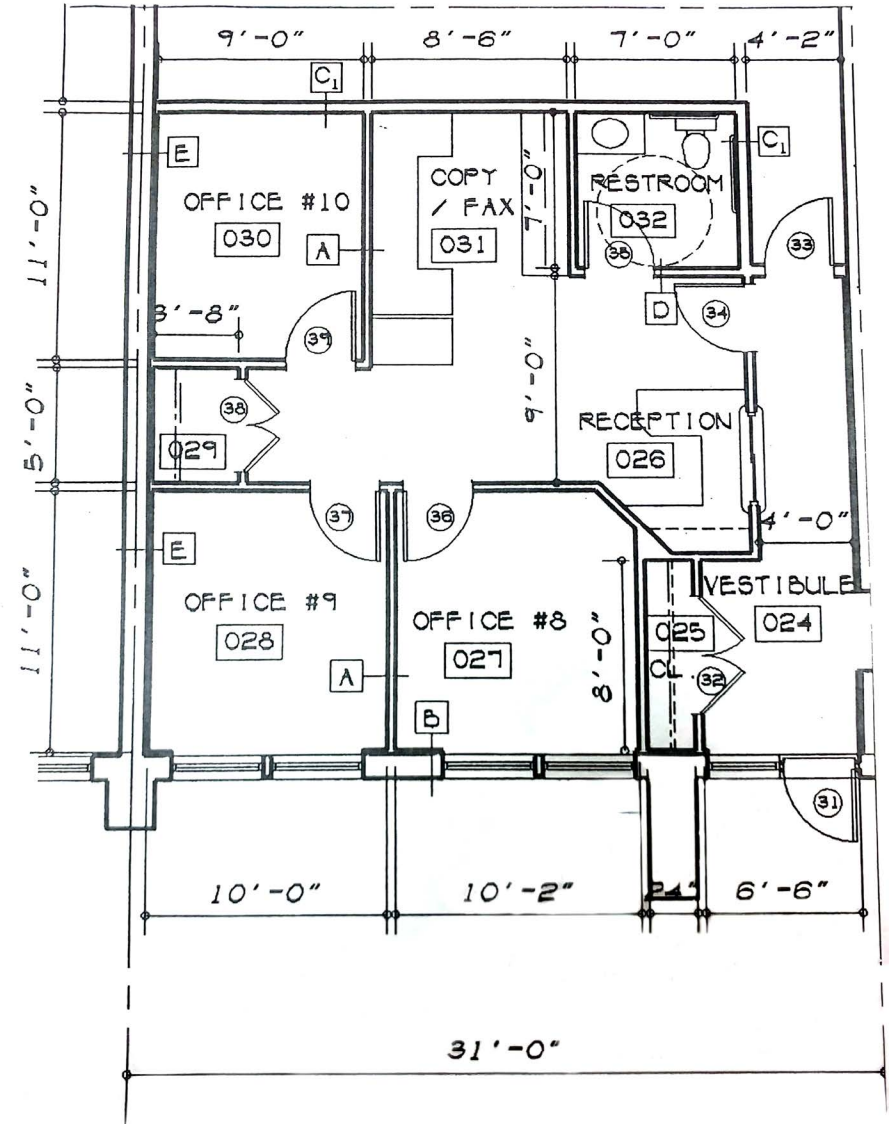
4473 Renaissance Pkwy, Warrensville Heights, OH 44128

PROPERTY OVERVIEW

PROPERTY SUMMARY

- 840 SF office unit for lease
- Features: 3 offices, bathroom, kitchenette
- Good space for law firm or insurance agency
- Located off of Emery Rd with 4,300 vpd and easy access to I-271 with 99,275 vpd
- Many residential and retail subdivisions in the area
- Zoned: suburban

CLICK HERE FOR
GOOGLE MAPS VIEW



DEMOGRAPHICS

	1-MILE	3-MILE	5-MILE
POPULATION	4,068	47,172	164,762
HOUSEHOLDS	1,845	21,221	71,345
AVERAGE HH INCOME	\$90,562	\$117,735	\$123,253
MEDIAN HH INCOME	\$58,995	\$81,534	\$86,750
DAYTIME POPULATION	6,879	79,084	186,537

840 SF OFFICE UNIT FOR LEASE

4473 Renaissance Pkwy, Warrensville Heights, OH 44128

MICRO AERIAL



840 SF OFFICE UNIT FOR LEASE

4473 Renaissance Pkwy, Warrensville Heights, OH 44128

MACRO AERIAL

