

21,694 SF FORMER AUTO DEALERSHIP FOR SALE



FORMER AUTO DEALERSHIP FOR SALE

2115 Mentor Ave, Painesville, OH 44077

CONTACT:

Michael Occhionero

MichaelOcchionero@HannaCRE.com

(216) 861.5291

21,694 SF FORMER AUTO DEALERSHIP FOR SALE

2115 Mentor Ave, Painesville, OH 44077

PROPERTY OVERVIEW

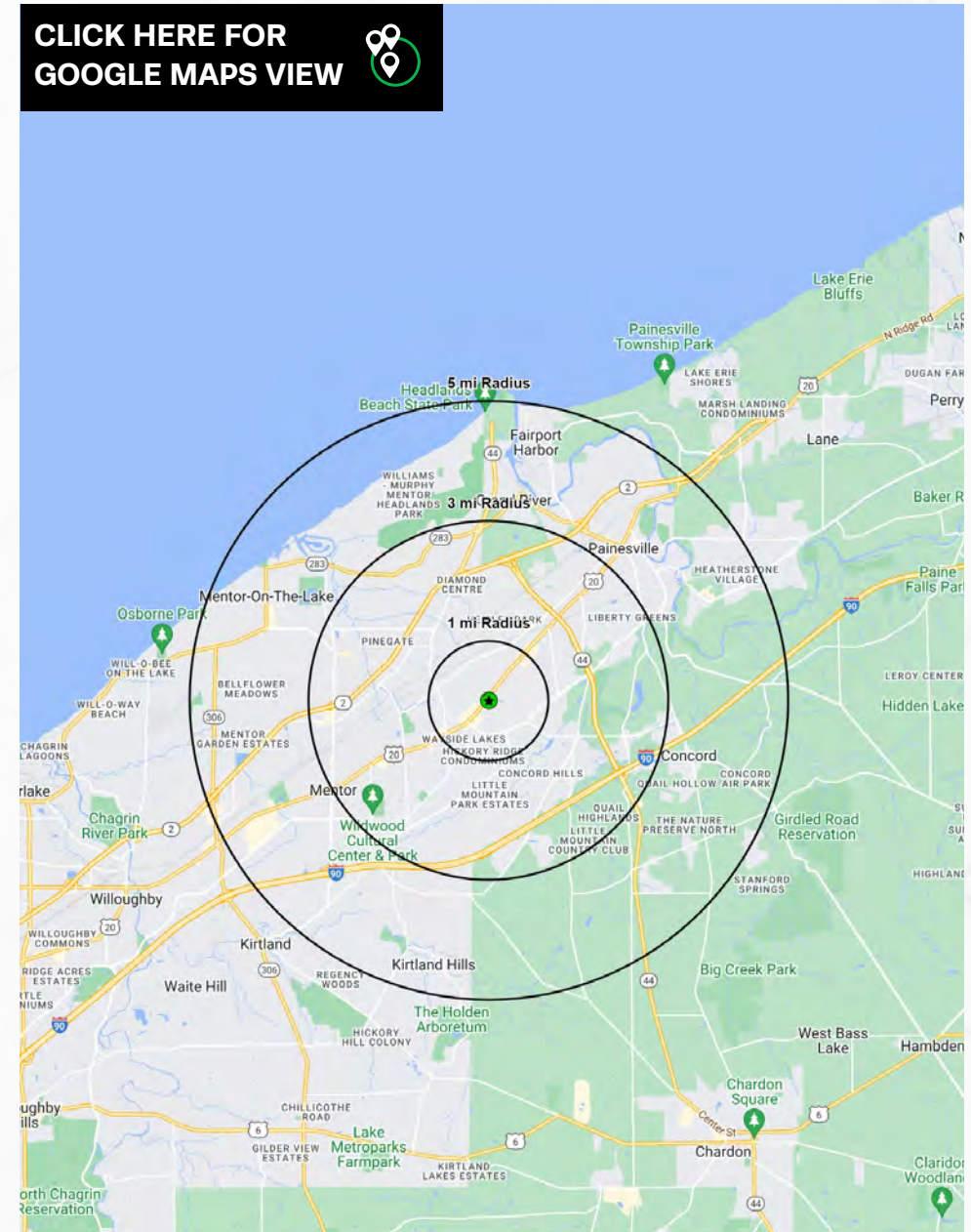
PROPERTY SUMMARY

- Recently remodeled 21,694 SF Auto Dealership
- Near many great retailers including Target, Aldi's, Sherwin Williams, Chick-Fil-A, Crumbl, Trader Joes & much more!
- Located off of Mentor Ave with 17,363 VPD
- Easy highway access to OH-44 and I-90

CLICK HERE FOR
GOOGLE MAPS VIEW



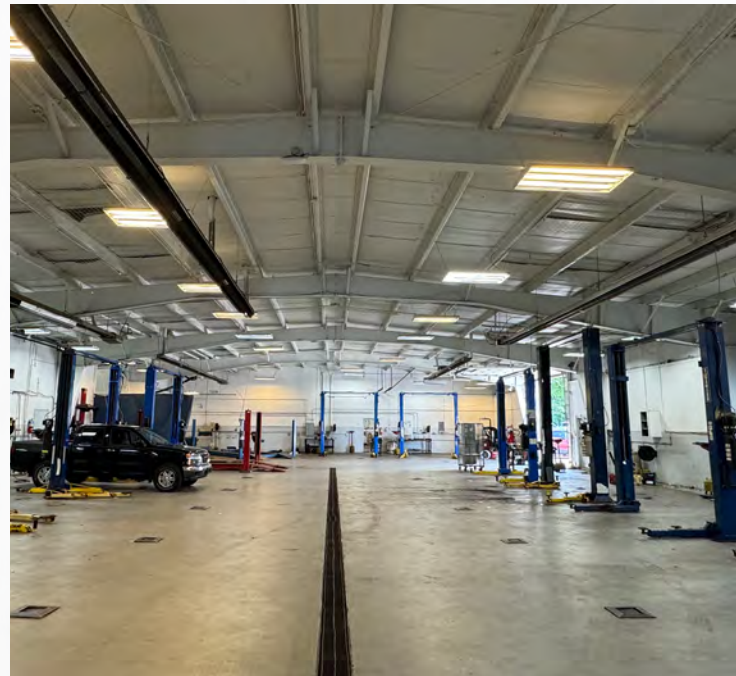
DEMOGRAPHICS	1-MILE	3-MILE	5-MILE
POPULATION	7,380	47,148	102,590
HOUSEHOLDS	3,393	19,731	43,674
AVERAGE HH INCOME	\$103,647	\$116,763	\$109,647
MEDIAN HH INCOME	\$88,602	\$94,817	\$87,826
DAYTIME POPULATION	2,851	21,499	45,307



21,694 SF FORMER AUTO DEALERSHIP FOR SALE

2115 Mentor Ave, Painesville, OH 44077

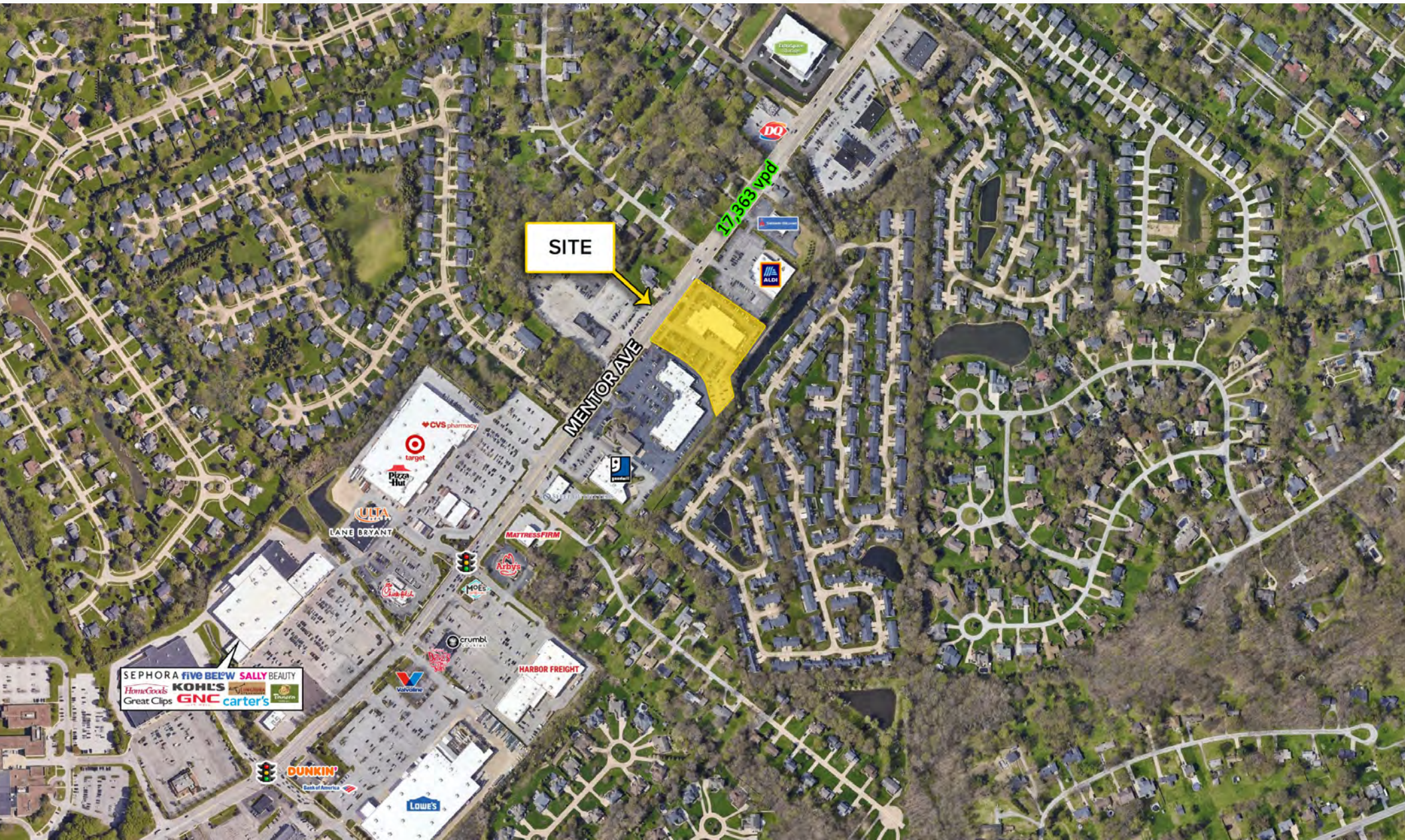
PICTURES



21,694 SF FORMER AUTO DEALERSHIP FOR SALE

2115 Mentor Ave, Painesville, OH 44077

MICRO AERIAL



21,694 SF FORMER AUTO DEALERSHIP FOR SALE

2115 Mentor Ave, Painesville, OH 44077

MACRO AERIAL

