

30,000 SF INDUSTRIAL BUILDING AVAILABLE FOR LEASE

15005 Enterprise Way, Middlefield, OH 44062



CONTACT US:

David Wagner
davidwagner@hannacre.com
216.839.2002

30,000 SF INDUSTRIAL BUILDING FOR LEASE

15005 Enterprise Way, Middlefield, OH 44062

PROPERTY OVERVIEW

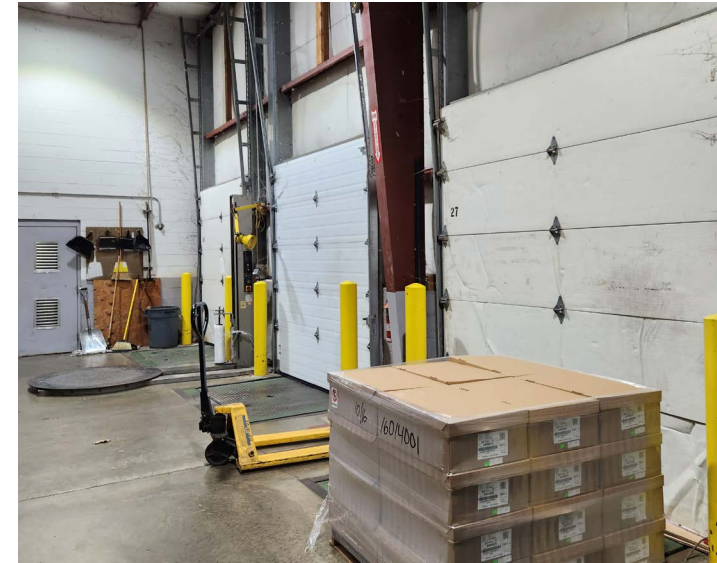
PROPERTY OVERVIEW

- Approximately 30,000 SF building on 7.58 acres for lease
- Office RSF : 3,600 RSF
- \$4.95/SF (warehouse) – \$7.95/SF (office) NET per year
- Power – 5,000 amps and 600 volts max
- Compressor – 30 HP Updraft
- Chiller – 30T
- Water tower – 600 gallons and 150 gallons for closed loop to feed machines
- Great location in industrial park off of Kinsman Rd
- 5 minute drive to Geauga County Airport

2023 DEMOGRAPHICS

	1 Miles	3 Miles	5 Miles
Population	948	7,510	15,177
Households	386	3,025	5,745
Median HH Income	\$72,422	\$71,284	\$81,936
Average HH Income	\$77,274	\$87,550	\$97,647
Daytime Population	4,252	11,660	12,919

[View in Google Maps](#)



David Wagner

davidwagner@hannacre.com

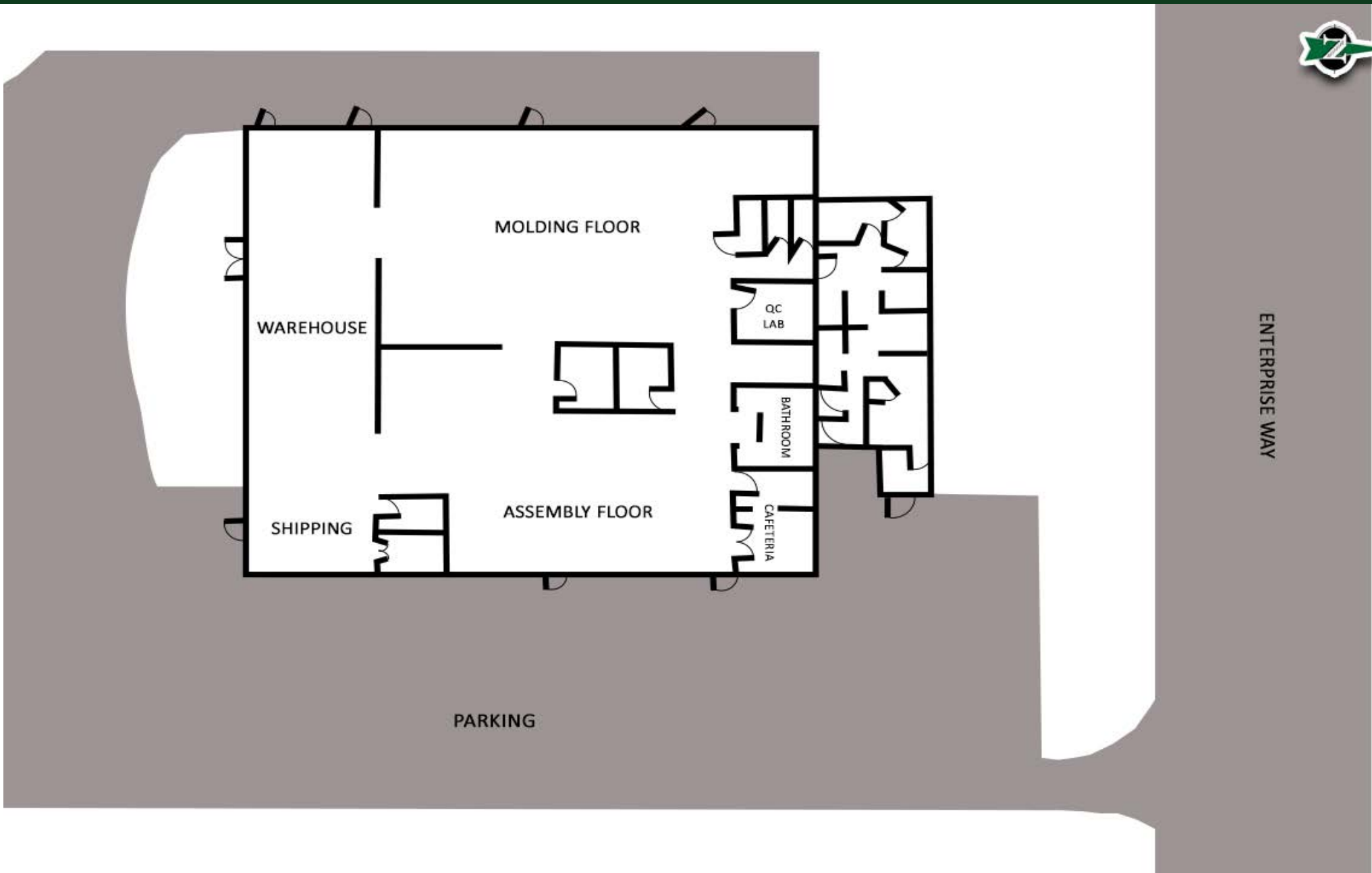
216.839.2002

HANNA
COMMERCIAL REAL ESTATE

30,000 SF INDUSTRIAL BUILDING FOR LEASE

15005 Enterprise Way, Middlefield, OH 44062

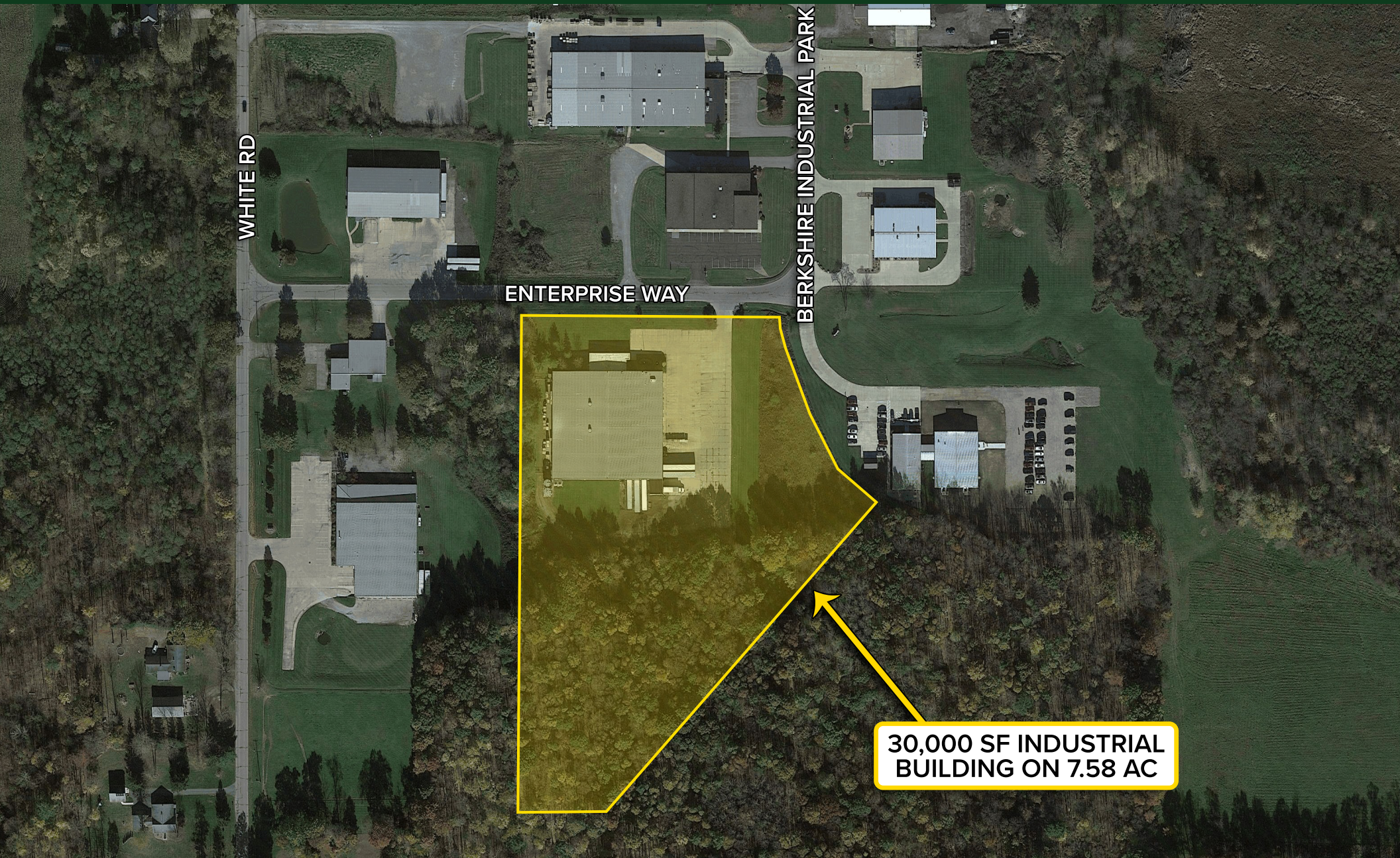
FLOOR PLAN



30,000 SF INDUSTRIAL BUILDING FOR LEASE

15005 Enterprise Way, Middlefield, OH 44062

MICRO AERIAL



WHITE RD

ENTERPRISE WAY

BERKSHIRE INDUSTRIAL PARK

30,000 SF INDUSTRIAL BUILDING ON 7.58 AC

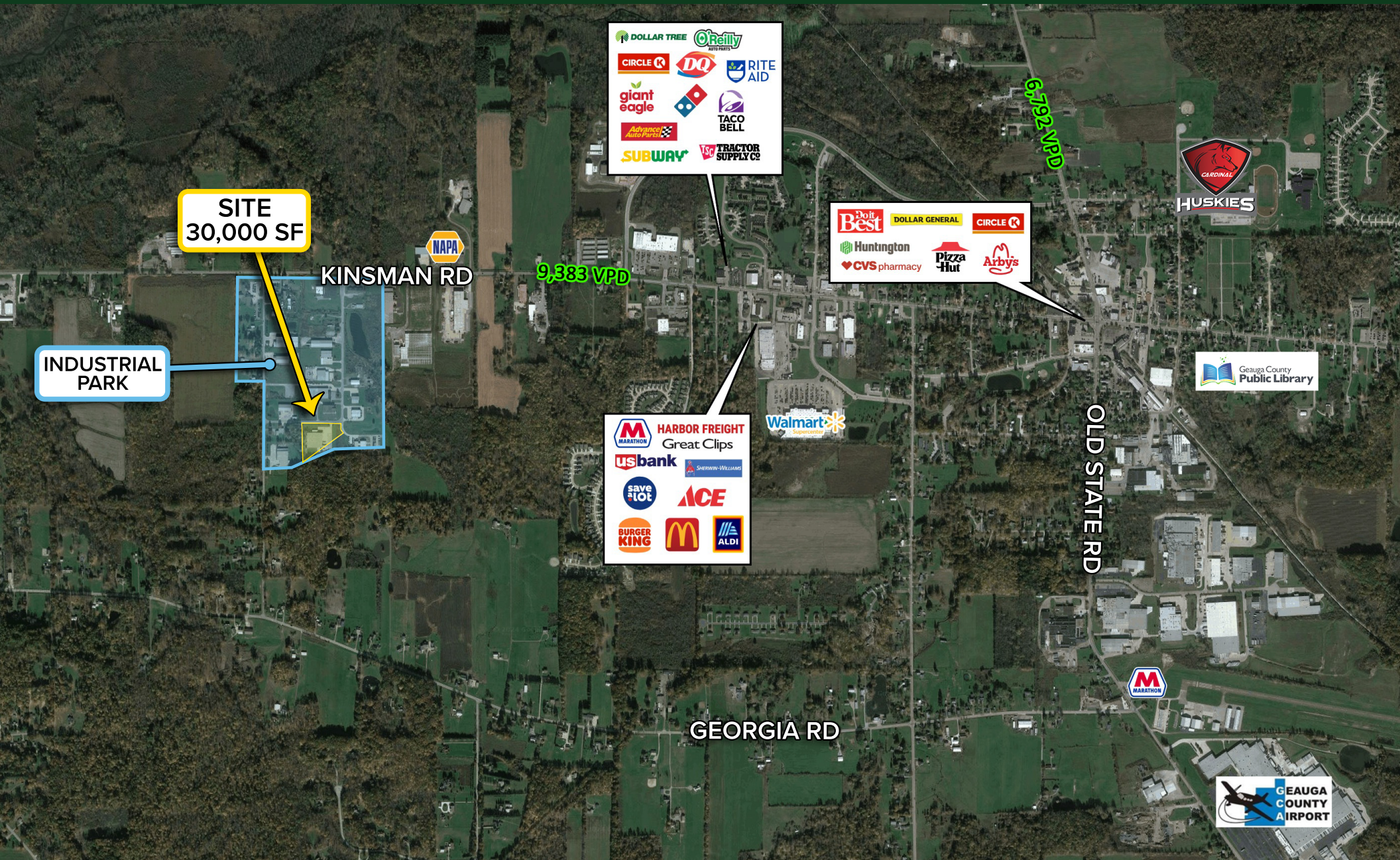
David Wagner
davidwagner@hannacre.com
216.839.2002

HANNA
COMMERCIAL REAL ESTATE

30,000 SF INDUSTRIAL BUILDING FOR LEASE

15005 Enterprise Way, Middlefield, OH 44062

MACRO AERIAL



SITE
30,000 SF

INDUSTRIAL
PARK

KINSMAN RD

9,383 VPD

6,792 VPD

OLD STATE RD

GEORGIA RD

- DOLLAR TREE
- O'Reilly AUTO PARTS
- CIRCLE K
- DQ
- RITE AID
- giant eagle
- Advantage Auto Parts
- TACO BELL
- SUBWAY
- TRACTOR SUPPLY CO

- Do it Best
- DOLLAR GENERAL
- CIRCLE K
- Huntington
- CVS pharmacy
- Pizza Hut
- Arby's

- MARATHON
- HARBOR FREIGHT
- Great Clips
- usbank
- save a lot
- ACE
- BURGER KING
- McDonald's
- ALDI

Walmart Supercenter



Geauga County Public Library



David Wagner
davidwagner@hannacre.com
216.839.2002

