

**LAND AVAILABLE  
FOR SALE**



**SITE  
14 ACRES**

**WAMPLERS LAKE ROAD**

**MONROE PIKE**



**14 ACRES OF LAND AVAILABLE IN BROOKLYN MICHIGAN**  
Wamplers Lake Rd, Brooklyn, MI 49230

**CONTACT:**

**David Mrachko**  
DavidMrachko@HannaCRE.com  
(216) 214.1197



# 14 ACRES OF LAND FOR SALE

Wamplers Lake Rd, Brooklyn, MI 49230

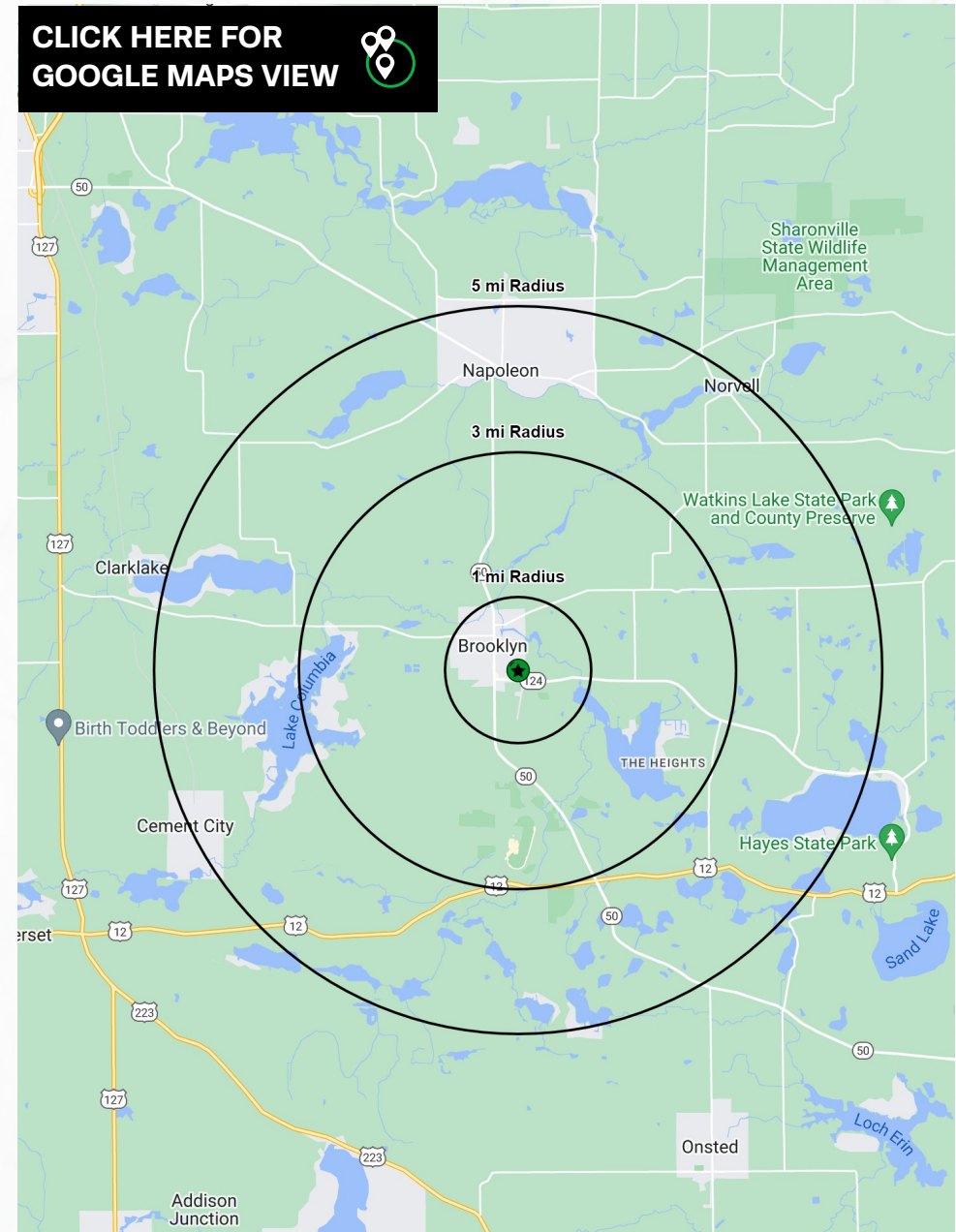
## PROPERTY OVERVIEW

### PROPERTY SUMMARY

- Asking \$550,000
- 14 Acres of Land in Brooklyn, Michigan
- Zoned I-1: light industrial
- Ideal site for self-storage
- Largest industrial parcel in the Village of Brooklyn
- Stormwater drainage easement to Kedron Drain
- Quick access to US 50 with 11,988 vehicles per day
- Located 3 miles from Michigan International Speedway

DEMOGRAPHICS	1-MILE	3-MILE	5-MILE
POPULATION	1,681	5,818	14,898
HOUSEHOLDS	765	2,603	6,452
AVERAGE HH INCOME	\$97,063	\$94,469	\$113,385
MEDIAN HH INCOME	\$70,866	\$72,287	\$88,315
DAYTIME POPULATION	1,194	1,861	2,560

CLICK HERE FOR  
GOOGLE MAPS VIEW

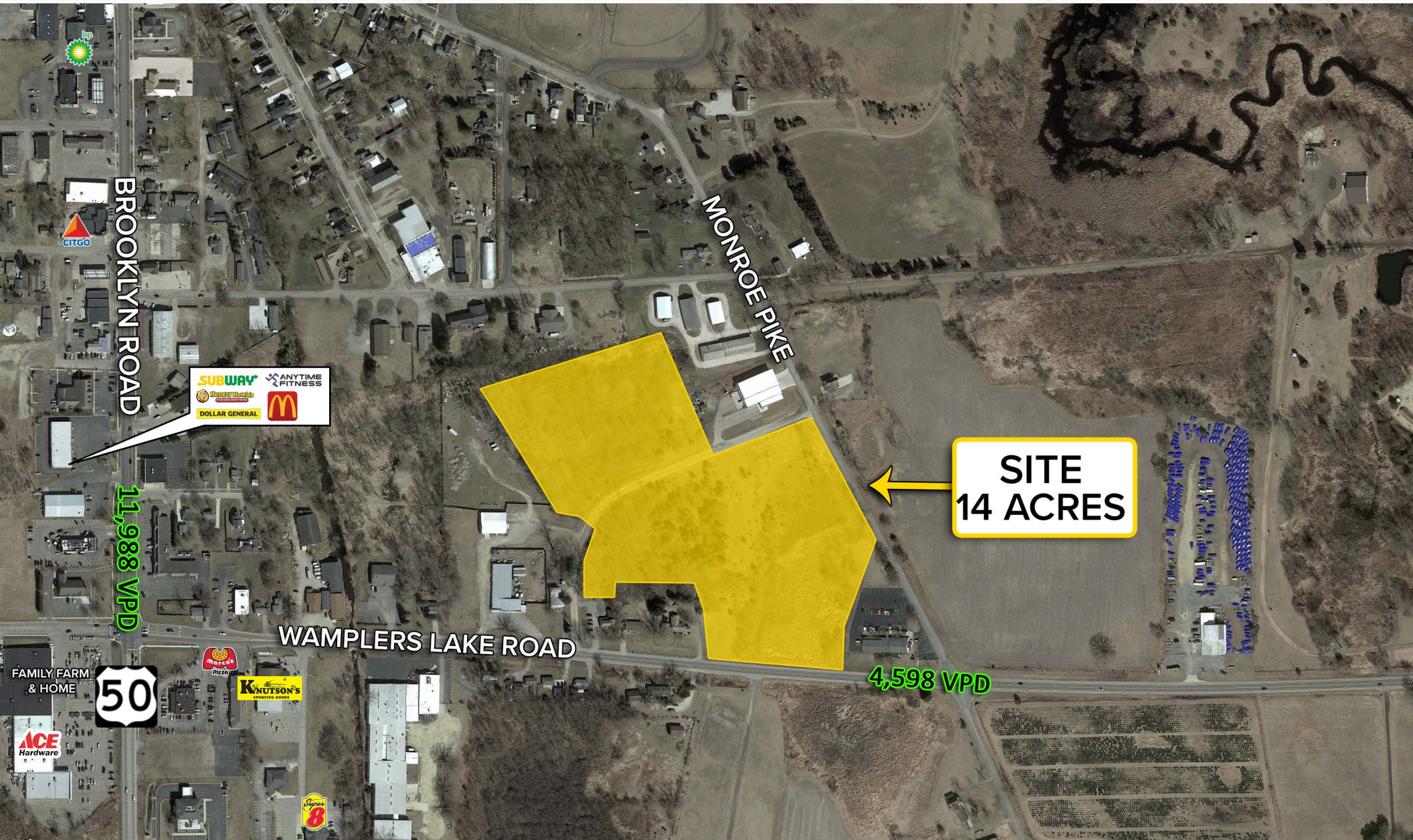




# 14 ACRES OF LAND FOR SALE

Wamplers Lake Rd, Brooklyn, MI 49230

MICRO AERIAL





# 14 ACRES OF LAND FOR SALE

Wamplers Lake Rd, Brooklyn, MI 49230

MACRO AERIAL

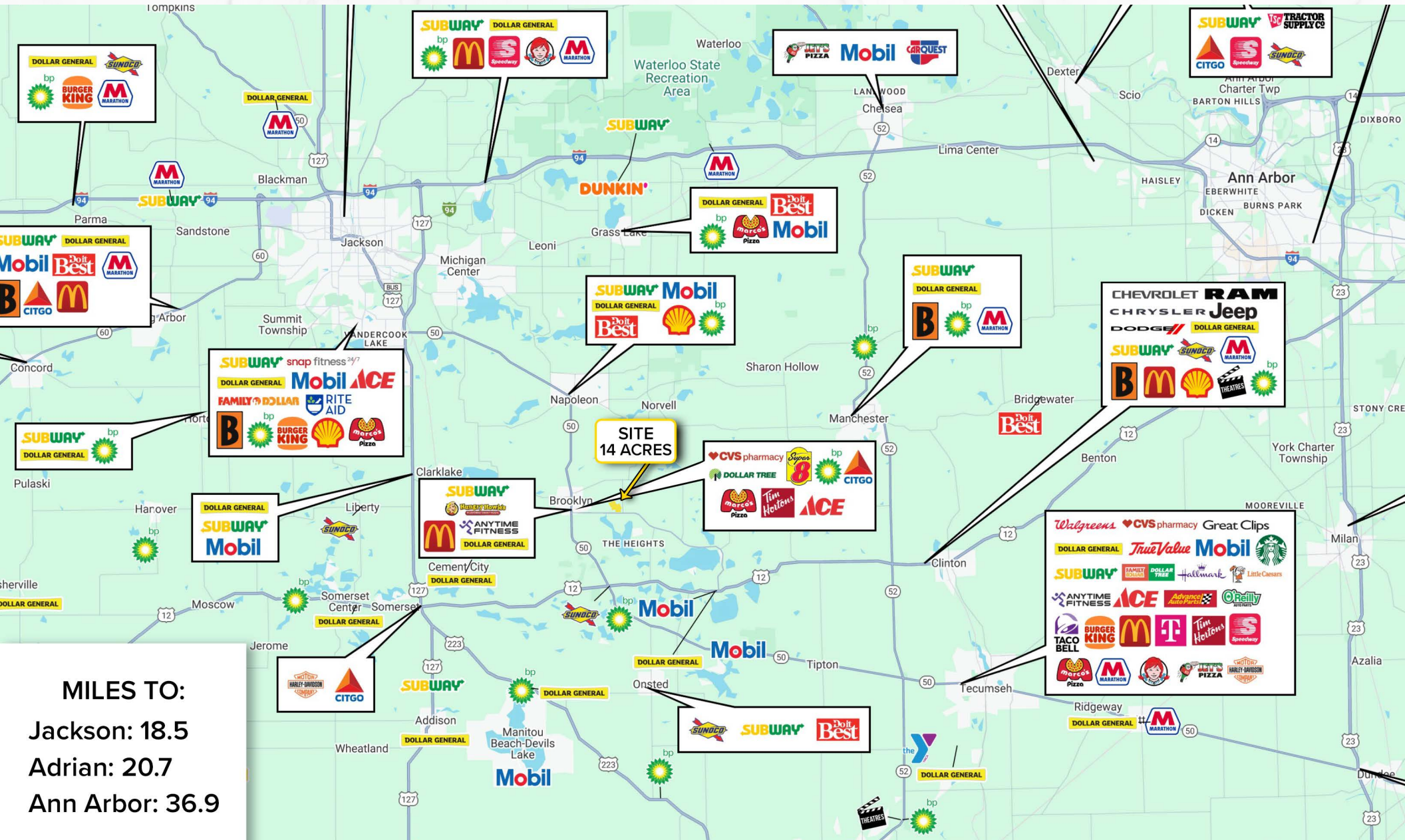




# 14 ACRES OF LAND FOR SALE

Wamplers Lake Rd, Brooklyn, MI 49230

REGIONAL AERIAL



**MILES TO:**  
Jackson: 18.5  
Adrian: 20.7  
Ann Arbor: 36.9