

# AVAILABLE FOR SUBLEASE

6722 Wales Ave. NW, North Canton, OH 44646



## CONTACT US:

**Shawn Darling**

shawndarling@hannacre.com  
216.861.5411

**Julie Sabroff, CCIM, SIOR**

juliesabroff@hannacre.com  
216.839.2029



# AVAILABLE FOR SUBLEASE

6722 Wales Ave. NW, North Canton, OH 44646

PROPERTY OVERVIEW

## PROPERTY OVERVIEW

- Excellent location & visibility on the hard corner of Wales Ave. & Portage St.
- Across from new construction retail strip center
- Move-in ready space with built-in desks and cubicles
- 5 minutes to I-77, Starbucks, IHOP, Einstein Bagels, Long Horn, Carrabba's & more

## 2023 DEMOGRAPHICS

	1 Miles	3 Miles	5 Miles
Population	5,639	27,848	90,086
Households	2,191	11,197	38,866
Median HH Income	\$111,150	\$108,012	\$87,213
Average HH Income	\$185,514	\$152,382	\$124,059
Daytime Population	865	15,414	44,668

[View in Google Maps](#)



**Shawn Darling**  
shawndarling@hannacre.com  
216.861.5411

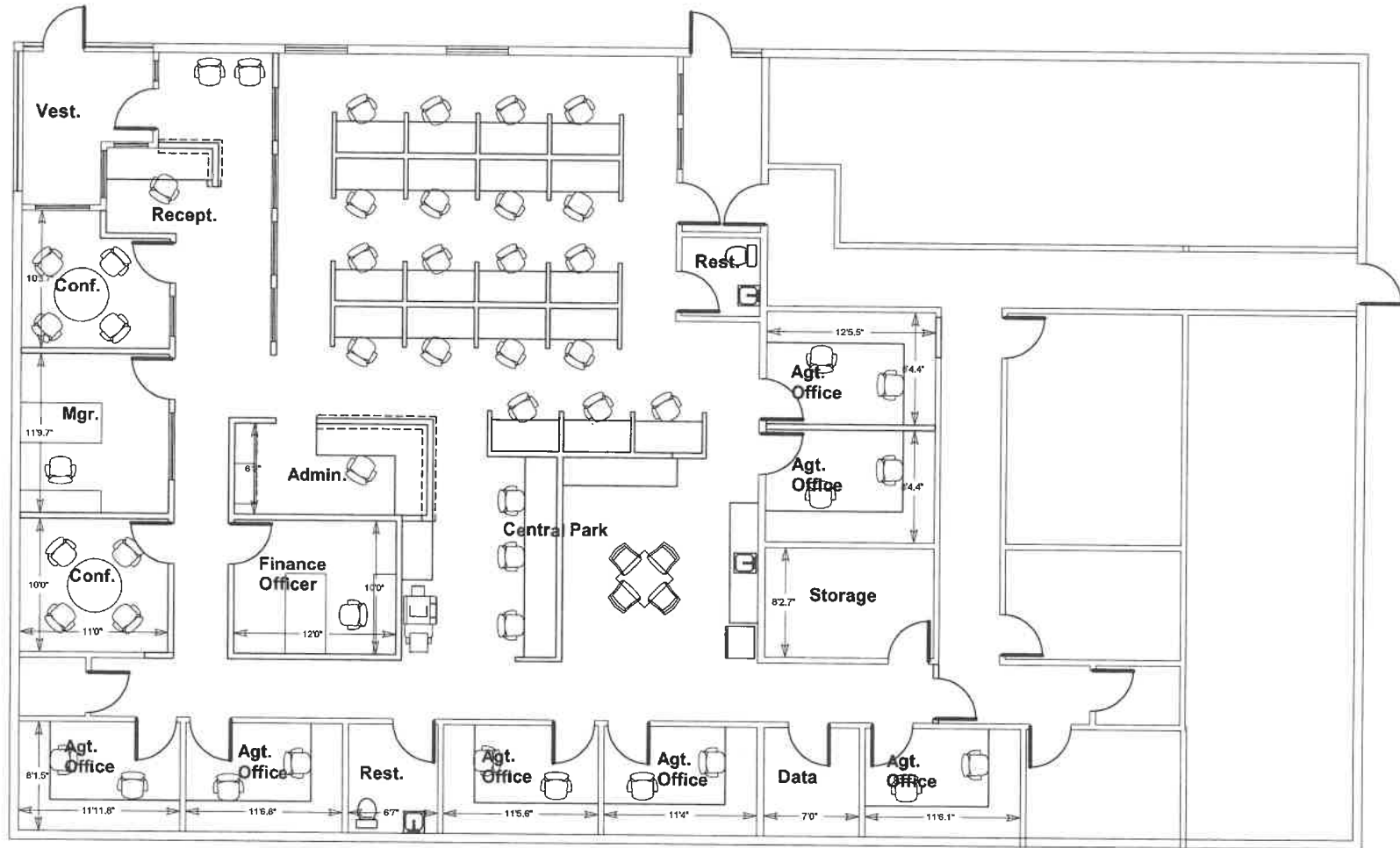
**Julie Sabroff, CCIM, SIOR**  
juliesabroff@hannacre.com  
216.839.2029



# AVAILABLE FOR SUBLEASE

6722 Wales Ave. NW, North Canton, OH 44646

FLOOR PLAN



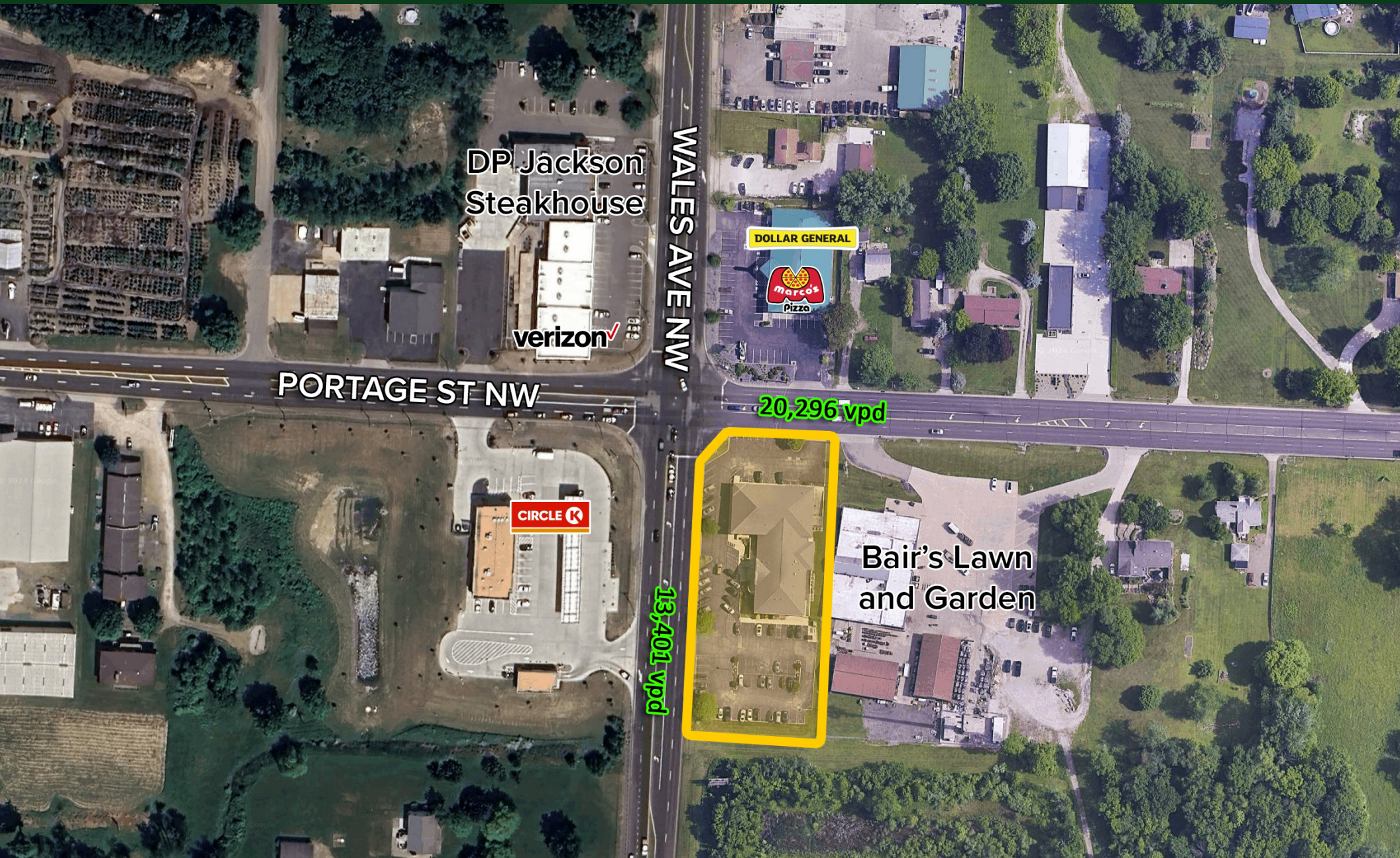
**Howard Hanna Proposed Jackson Office  
Version 1**

**Desk Count:  
7 Offices: 14  
Bullpen: 19  
Total: 33**

# AVAILABLE FOR SUBLEASE

6722 Wales Ave. NW, North Canton, OH 44646

MICRO AERIAL



DP Jackson  
Steakhouse

verizon

DOLLAR GENERAL

Marc's  
Pizzeria

PORTAGE ST NW

WALES AVE NW

20,296 vpd

CIRCLE K

13,401 vpd

Bair's Lawn  
and Garden

**Shawn Darling**  
shawndarling@hannacre.com  
216.861.5411

**Julie Sabroff, CCIM, SIOR**  
juliesabroff@hannacre.com  
216.839.2029

