

LANDMARK STOW RETAIL FOR LEASE

3260 Kent Rd, Stow, OH 44224



CONTACT:

John Lubinski
johnlubinski@hannacre.com
330.958.7291 (Text or Call)

LANDMARK STOW RETAIL FOR LEASE

3260 Kent Rd, Stow, OH 44224

PROPERTY OVERVIEW

PROPERTY OVERVIEW

- Highly Visible Retail in Stow OH on 59
- 3276 Sq Ft – Retail Showrooms & Warehouse
- Prominent Stow Landmark
- 18,000 VPD
- 2 Loading Docks
- 16+ Parking Spots
- Divisible into 2 Individual Units

2023 DEMOGRAPHICS

	1 Miles	3 Miles	5 Miles
Population	8,136	68,892	147,450
Households	3,538	30,998	65,425
Median HH Income	\$89,610	\$75,576	\$75,306
Average HH Income	\$108,202	\$99,813	\$99,886
Daytime Population	2,393	24,886	67,075

[View in Google Maps](#)



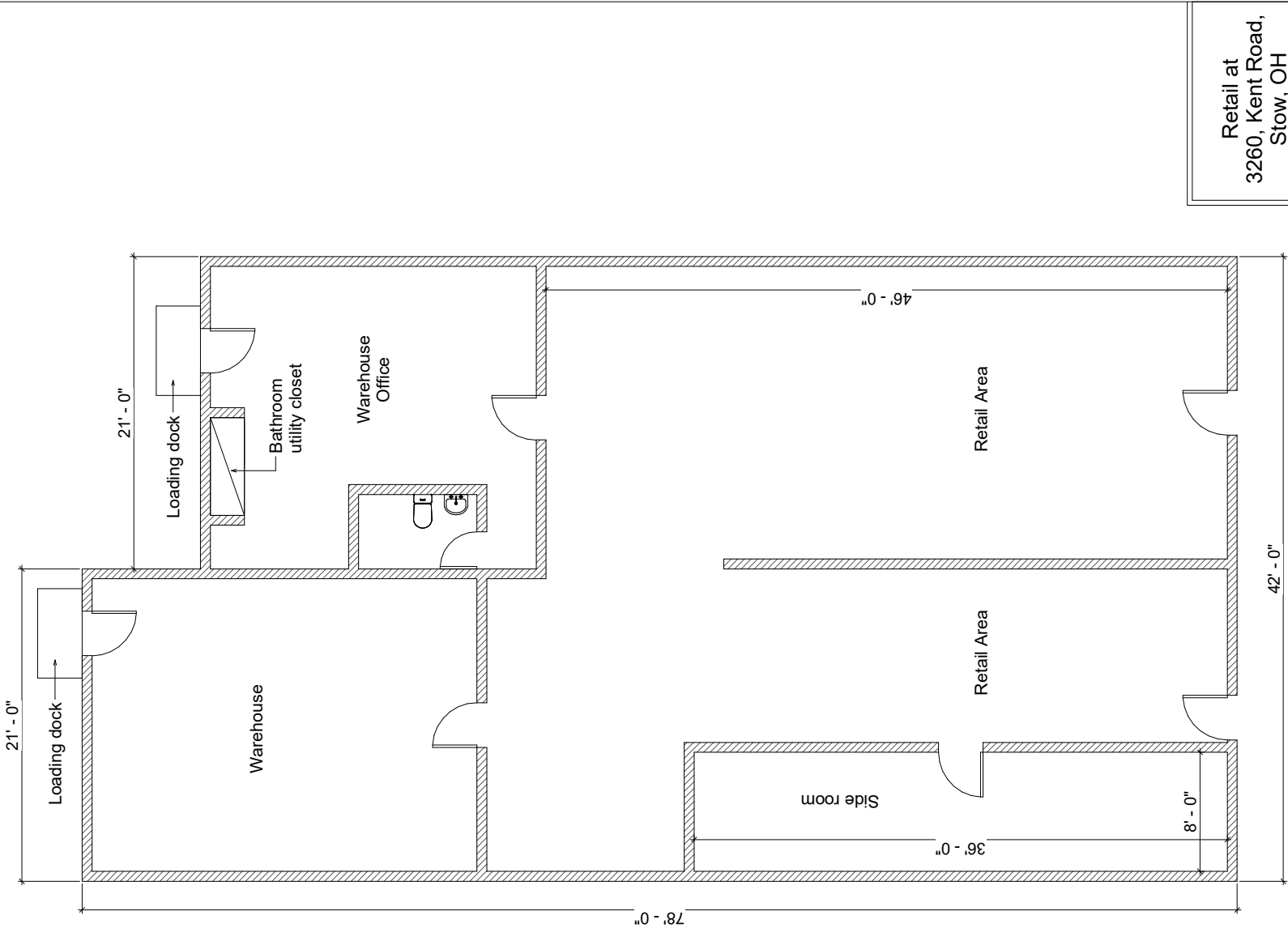
John Lubinski
johnlubinski@hannacre.com
330.958.7291 (Text or Call)

HANNA
COMMERCIAL REAL ESTATE

LANDMARK STOW RETAIL FOR LEASE

3260 Kent Rd, Stow, OH 44224

SITE PLAN



**Retail at
3260, Kent Road,
Stow, OH**

Project Number	FLP/001
Date	04th Aug 2023
Drawn By	IC
No.	
Description	
Date	
Scale	Not to scale

Layout plan
Not to scale

LANDMARK STOW RETAIL FOR LEASE

3260 Kent Rd, Stow, OH 44224

MACRO AERIAL



SITE
3,276 SF

DOLLAR GENERAL

Huntington

Citizens Bank

7-ELEVEN

bp

CVS pharmacy

**RON MARHOFER
CHEVROLET**

18,224 vpd

15,319 vpd

16,635 vpd

19,101 vpd

KENT RD

DARROW RD

**HOLY FAMILY
CHURCH & SCHOOL**

John Lubinski
johnlubinski@hannacre.com
330.958.7291 (Text or Call)

HANNA
COMMERCIAL REAL ESTATE