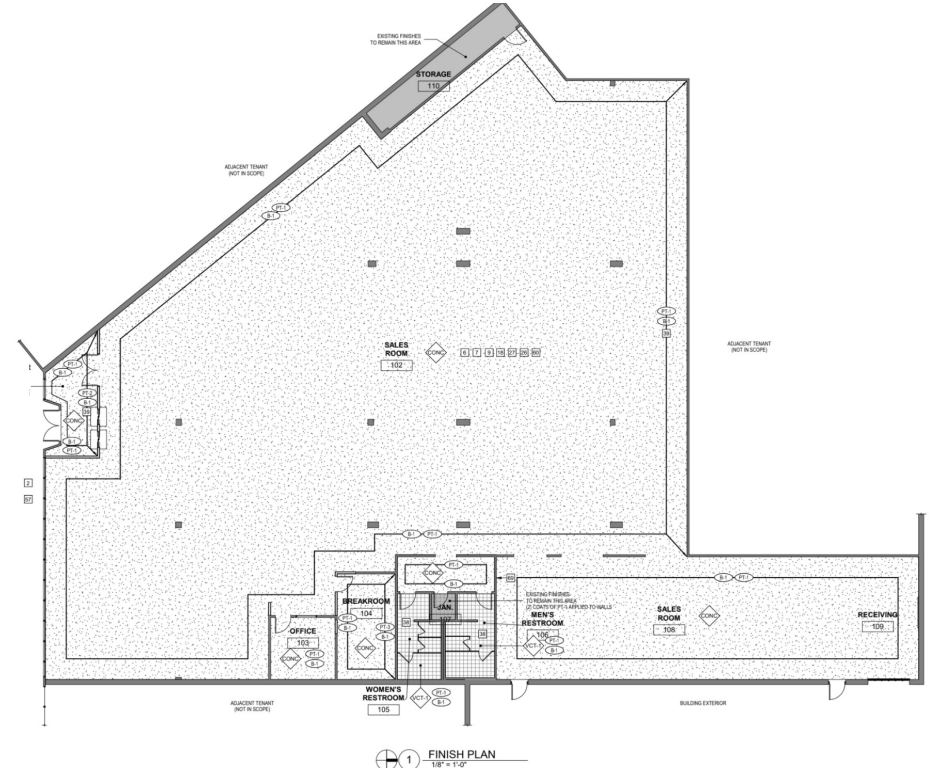
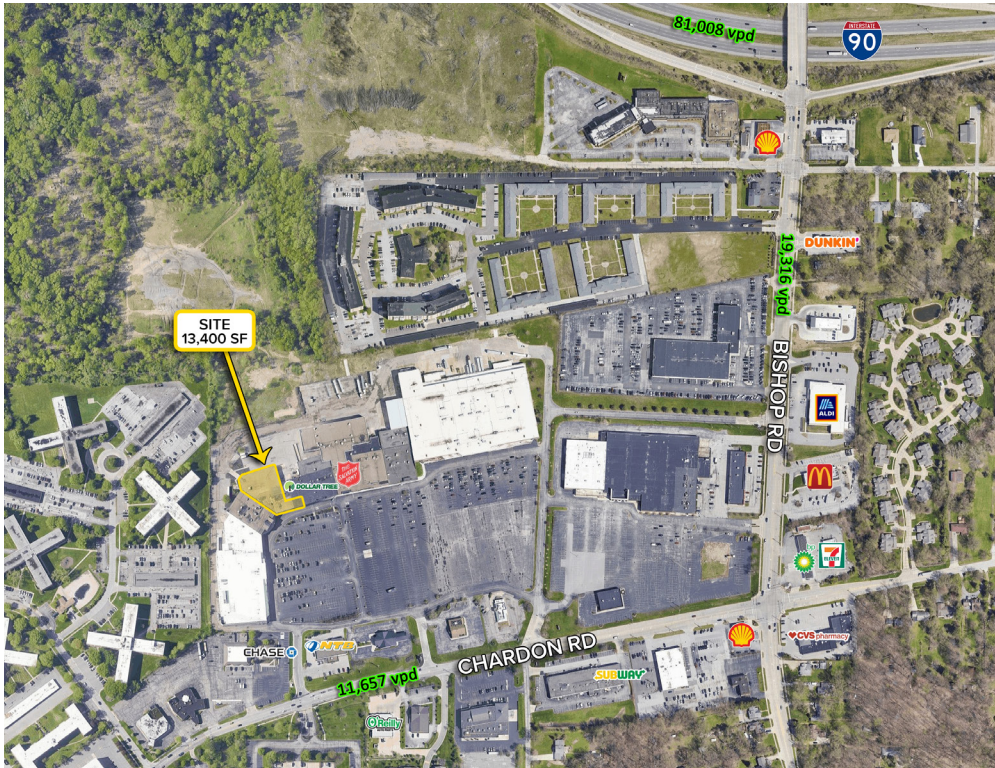


FOR SUBLEASE

27565 Chardon Road Willoughby Hills, OH 44092



DEMOGRAPHICS

2022 Population Summary	1 Mile	3 Miles	5 Miles
Total Population	10,842	80,697	188,524
Households	5,341	36,770	87,127
Daytime Population	5,444	38,487	89,394
2022 Household Income	1 Mile	3 Miles	5 Miles
Average Income	\$53,721	\$69,355	\$69,381
Median Income	\$37,413	\$56,269	\$56,853

PROPERTY INFORMATION

- 13,400 SF Available for Sub-Lease
- Anchored by Marc's Grocery Store, Milestone Athletic Club, & Produce Packaging
- Located at the busy intersection of Bishop and Chardon roads, just south of the Interstate 90 and Bishop Road interchange in Willoughby Hills

RATE

- \$10.00 NNN

Vincenzo Calabrese • VincenzoCalabrese@HannaCRE.com • 216.861.5286
 Tom Grasso • TomGrasso@HannaCRE.com • 216.861.5429



The information submitted herein is not guaranteed. Although obtained from reliable resources, it is subject to errors, omissions, prior sale and withdrawal from the market without notice. Broker has made no investigation and makes no representation of the property.